



IBM Location Based Services – What's New for 761 release

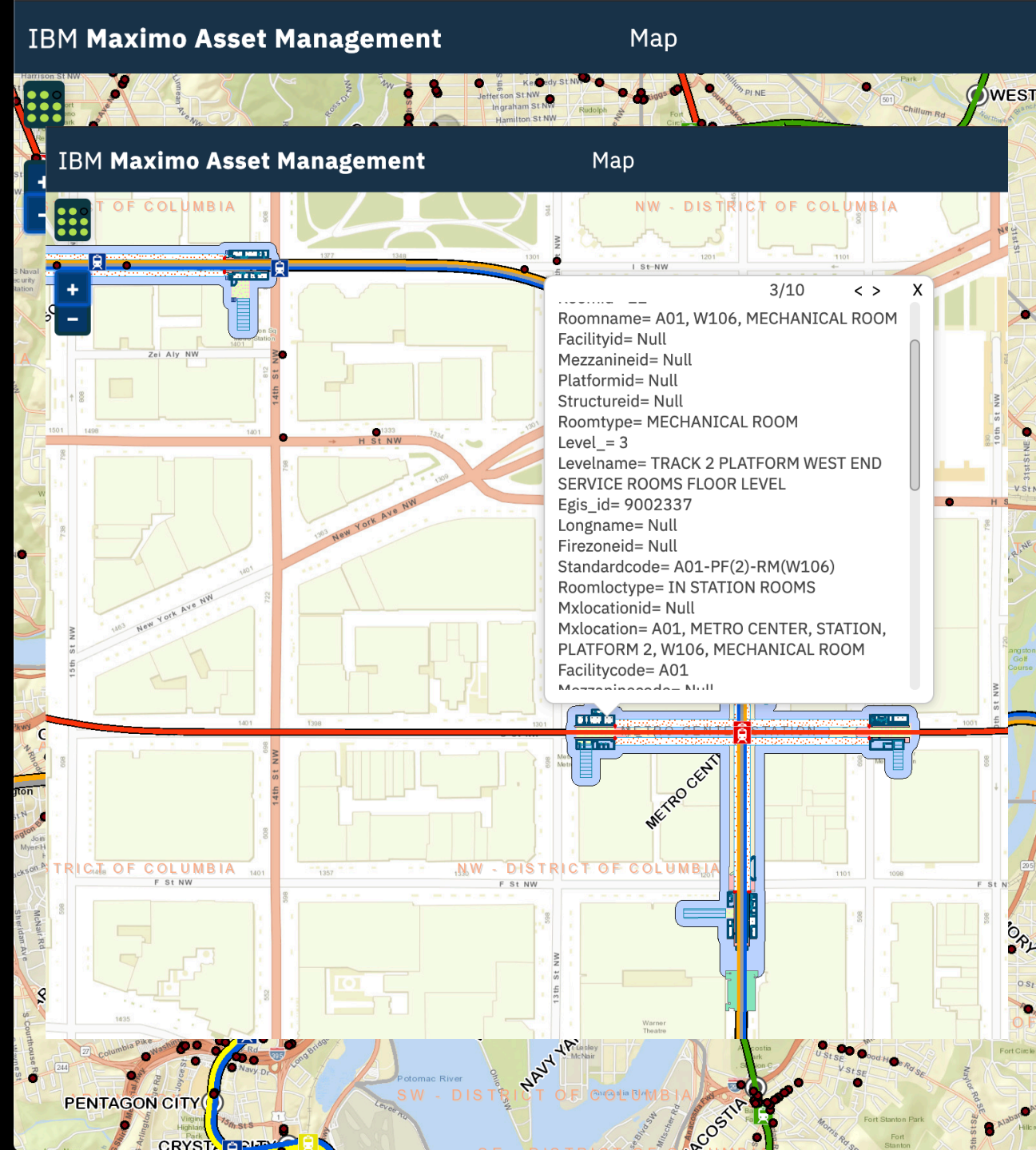
Ana Paula Brambila

Agenda

-
- Quick Overview of LBS
 - What's new in 7.6.1
 - Road Ahead
 - References
 - QA

IBM Maximo Location Based Services (LBS)

- Provides a GIS solution that allows users to visualize, query, analyze, and interpret EAM data to understand relationships, patterns and trends.
- Creates a level of awareness and insight that tabular systems without graphics cannot provide



IBM Maximo: LBS Offerings



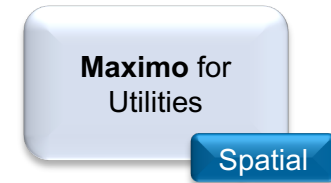
Anywhere



Work Centers



Scheduler/Plus



Industry Solutions

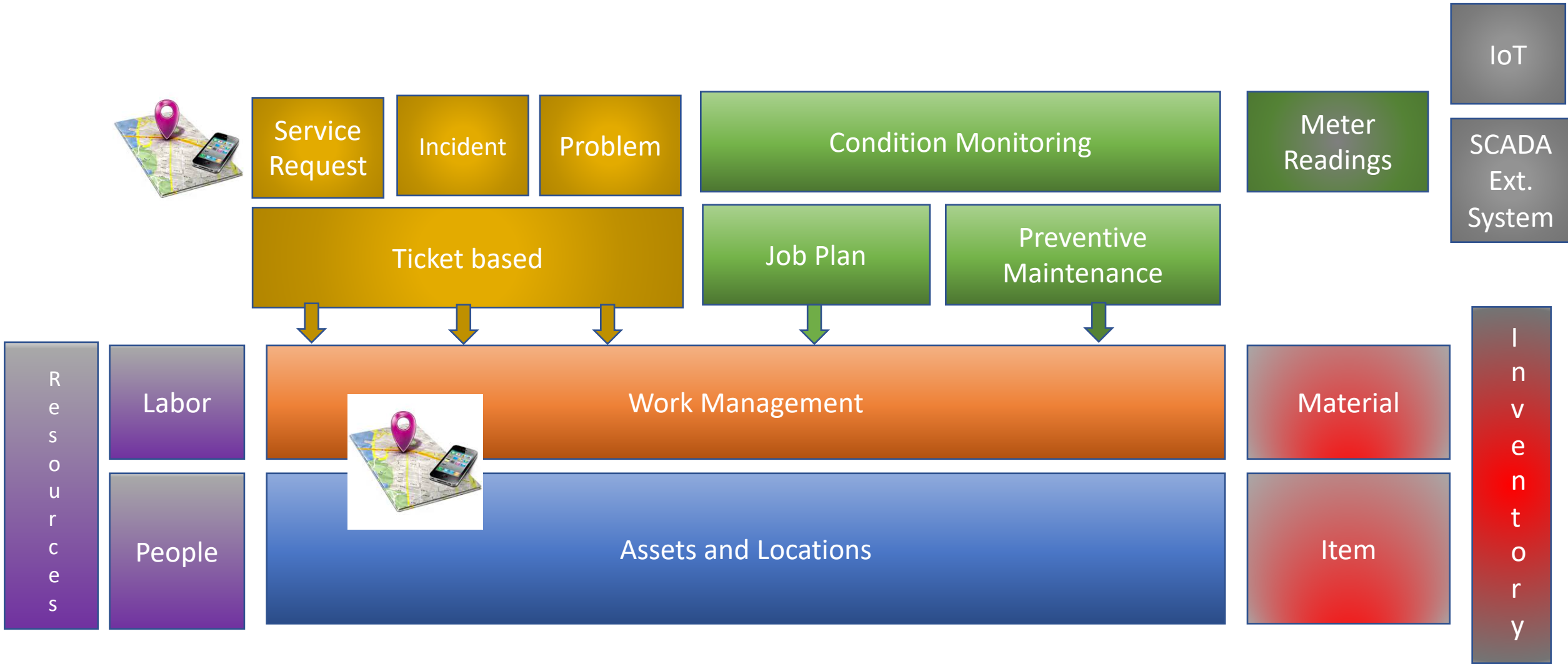
Maximo Location Based Services



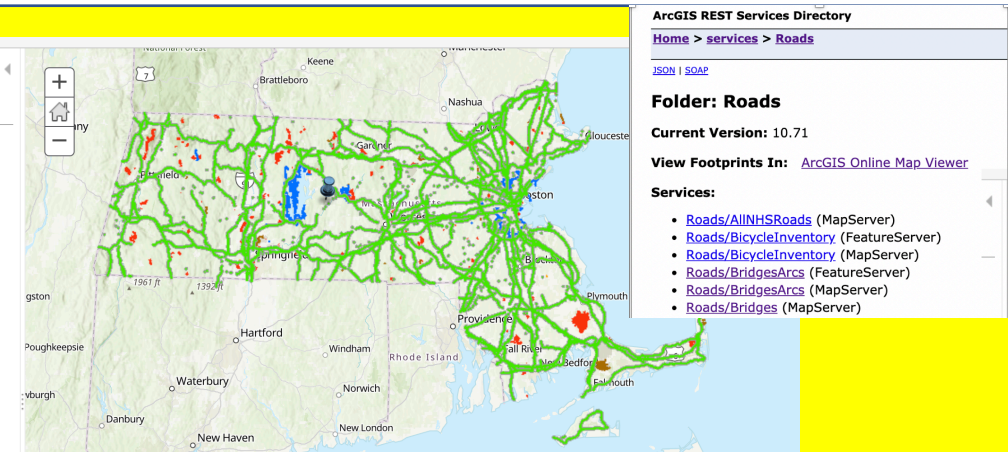
Maximo Spatial




Positioning Spatial into EAM...




Example - How LBS works?



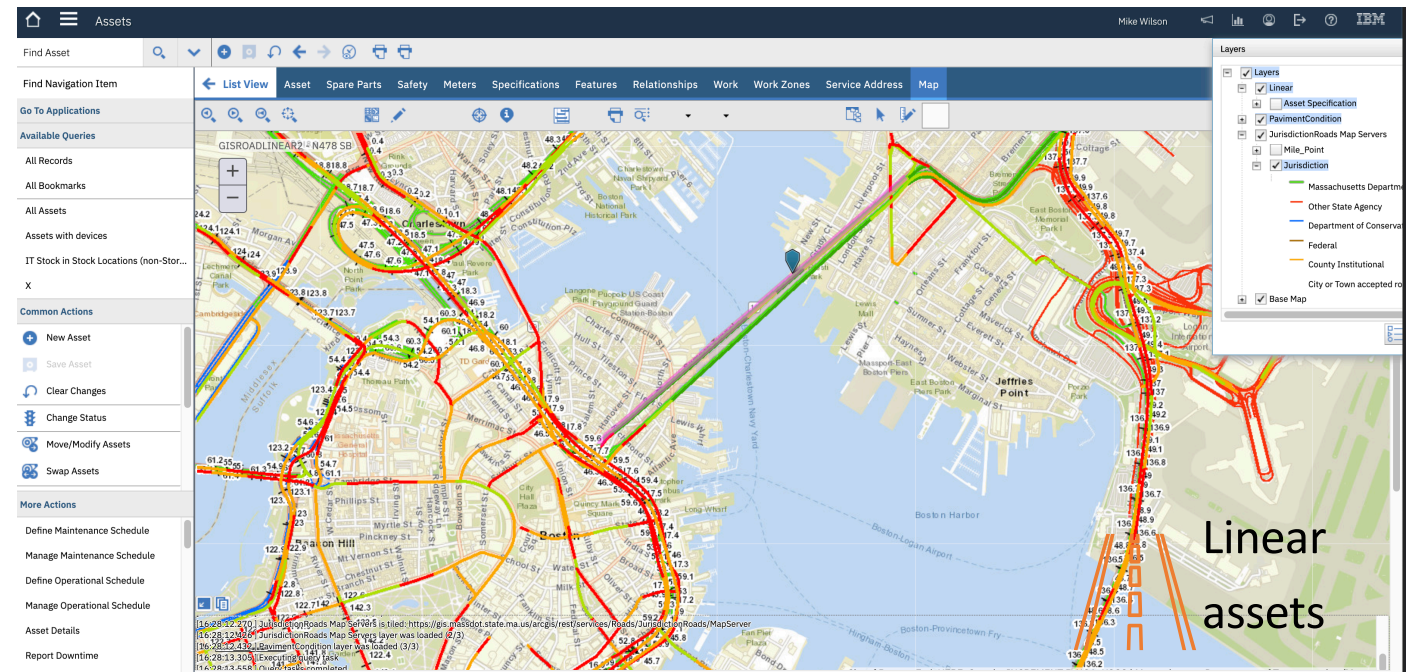

ArcGIS REST Services Directory
Home > services > Roads
JSON | SOAP
Folder: Roads
Current Version: 10.71
View Footprints In: [ArcGIS Online Map Viewer](#)
Services:
• [Roads/AllNHSRoads](#) (MapServer)
• [Roads/BicycleInventory](#) (FeatureServer)
• [Roads/BicycleInventory](#) (MapServer)
• [Roads/BridgesArcs](#) (FeatureServer)
• [Roads/BridgesArcs](#) (MapServer)
• [Roads/Bridges](#) (MapServer)

 **ArcGIS**
on line / portal / on-prem server
APIs

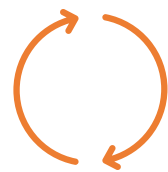


Maximo Map Manager

- Map Services
- Feature Services
- Link to Maximo Objects



Linear assets

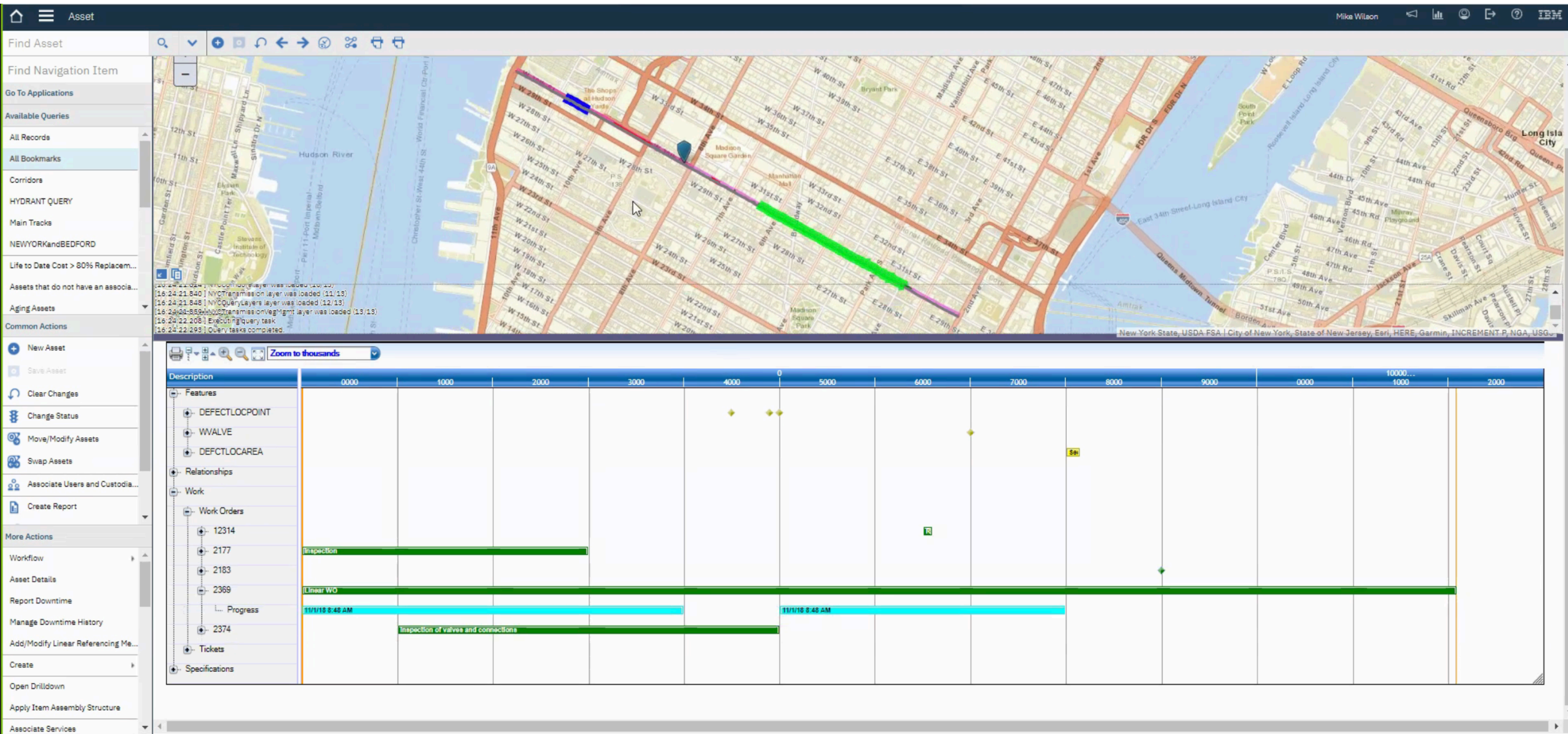


Maximo Integration (MIF)
Data synchronization

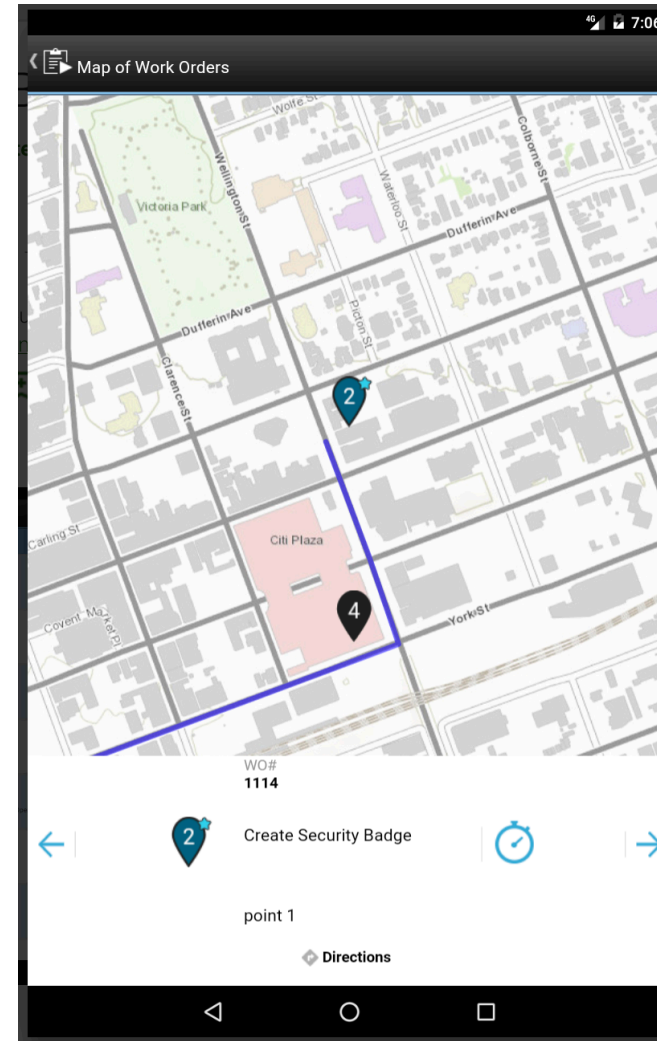
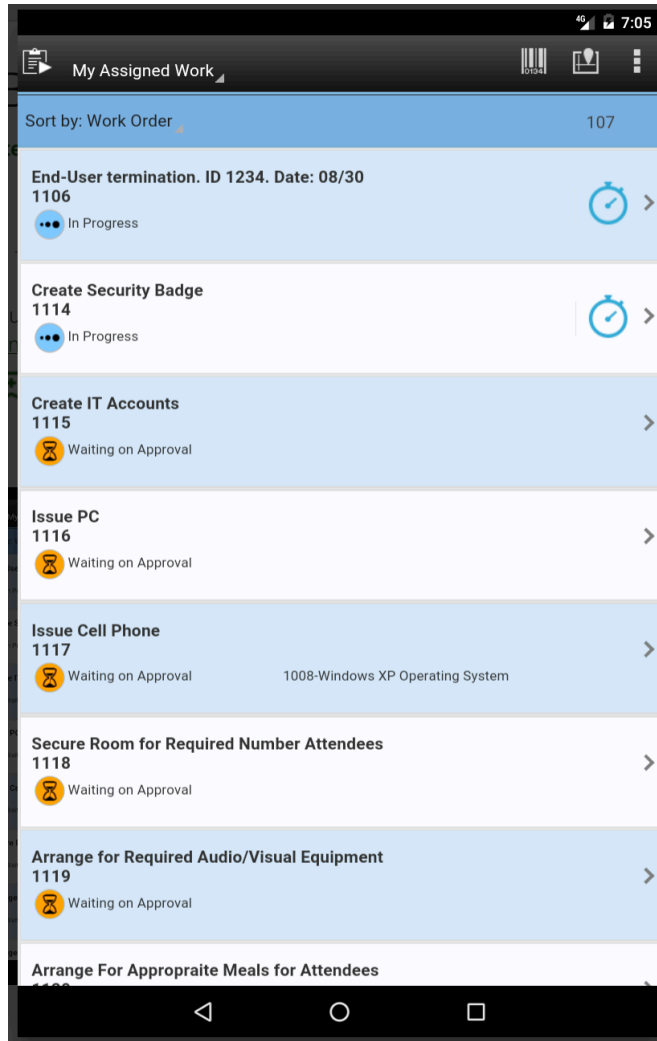
Asset/Locations/WO/SR Applications – Map Tab

The screenshot displays the IBM Asset Management System interface. The top navigation bar includes a 'Find Asset' search bar and a 'Find Navigation Item' dropdown. Below this is a 'Go To Applications' section and a list of 'Available Queries' including 'All Records', 'All Bookmarks', 'All Assets', 'Assets with devices', 'IT Stock in Stock Locations (non-Stor...', and 'X'. The 'Common Actions' section includes 'New Asset', 'Save Asset', 'Clear Changes', 'Change Status', 'Move/Modify Assets', and 'Swap Assets'. The 'More Actions' section includes 'Define Maintenance Schedule', 'Manage Maintenance Schedule', 'Define Operational Schedule', and 'Manage Operational Schedule'. The main map area shows a detailed view of Boston, with various road segments highlighted in different colors (red, orange, yellow, green, blue) representing different jurisdictions or asset types. A sidebar on the right lists the 'Layers' used in the map, including 'Linear', 'Asset Specification', 'PavimentCondition', 'JurisdictionRoads Map Servers', 'Mile_Point', and 'Jurisdiction'. The 'Jurisdiction' layer is expanded, showing a legend for 'Massachusetts Department of Transportation', 'Other State Agency', 'Department of Conservation and Recreation', 'Federal', 'County Institutional', and 'City or Town accepted responsibility'. The bottom status bar shows the following information: '[16:28:12.270] JurisdictionRoads Map Servers is tiled: https://gis.massdot.state.ma.us/arcgis/rest/services/Roads/JurisdictionRoads/MapServer', '[16:28:12.426] JurisdictionRoads Map Servers layer was loaded (2/3)', '[16:28:12.432] PavimentCondition layer was loaded (3/3)', '[16:28:13.305] Executing query task', and '[16:28:13.558] Query task completed'.

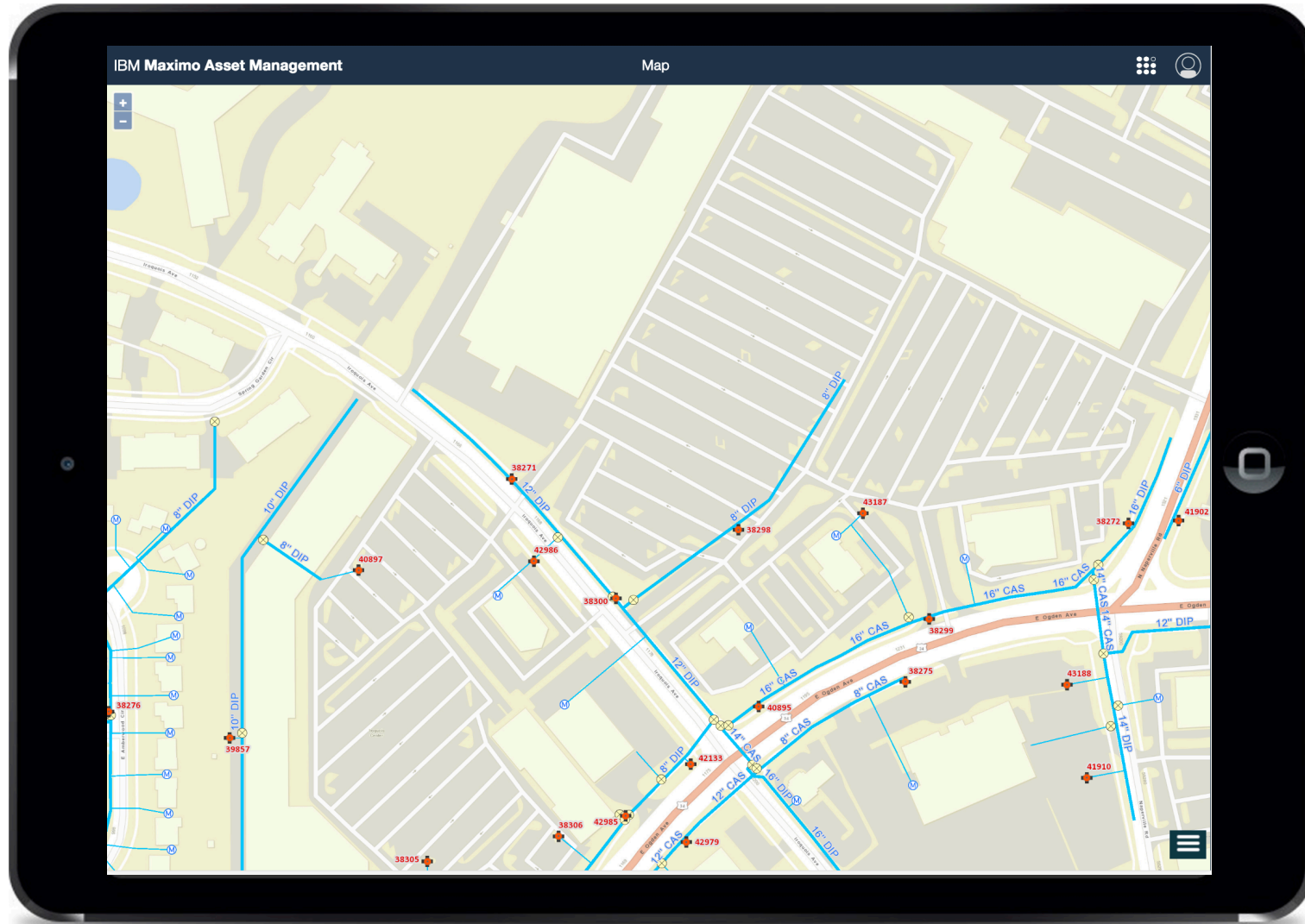
Linear Assets and Maps



Anywhere: Work Execution → Support Offline Map



Map Work Center



Maximo LBS 7.6.1.0

What's New?



Support Updates

- **ArcGIS API for JavaScript version 3.29**
 - System administrators can now take advantage of ArcGIS API for JavaScript features introduced in version 3.29.
- **Discontinuation of DBLINK support**
 - System administrators can integrate with ArcGIS servers exclusively through feature services.
<https://www.ibm.com/support/pages/node/6220318>
- **Vector tile layers**
 - System administrators can include vector tile map layers to display in maps. Vector tile layers store map objects as vector data that can be rendered as an image. Storing information this way decreases the time that it takes to access map data and saves space for storing map information.

Map Manager

Find Map

Find Navigation Item

Go To Applications

Available Queries

All Records

All Bookmarks

Common Actions

New Map Manager

Save Map Manager

Clear Changes

Create Report

Application Import

Application Export

Refresh

More Actions

Delete Map Manager

Add to Bookmarks

Run Reports

BMXAA4205I - Record has been saved.

Mike Wilson

Map Security

Map Services

Filter

1 - 1 of 1

vector tile basemap

100

https://basemaps.arcgis.com/arcgis/rest/services/World_Basemap_v2/VectorTileServer

Visible?

% Transparency

Web Map Defined?

Details

* Name: vector tile basemap

* URL: https://basemaps.arcgis.com/arcgis/rest/services/World_Basemap_v2/VectorTileServer

* Order: 100

* % Transparency: 0

Visible? ☒

Service Layers

Filter

0 - 0 of 0

ID

Name

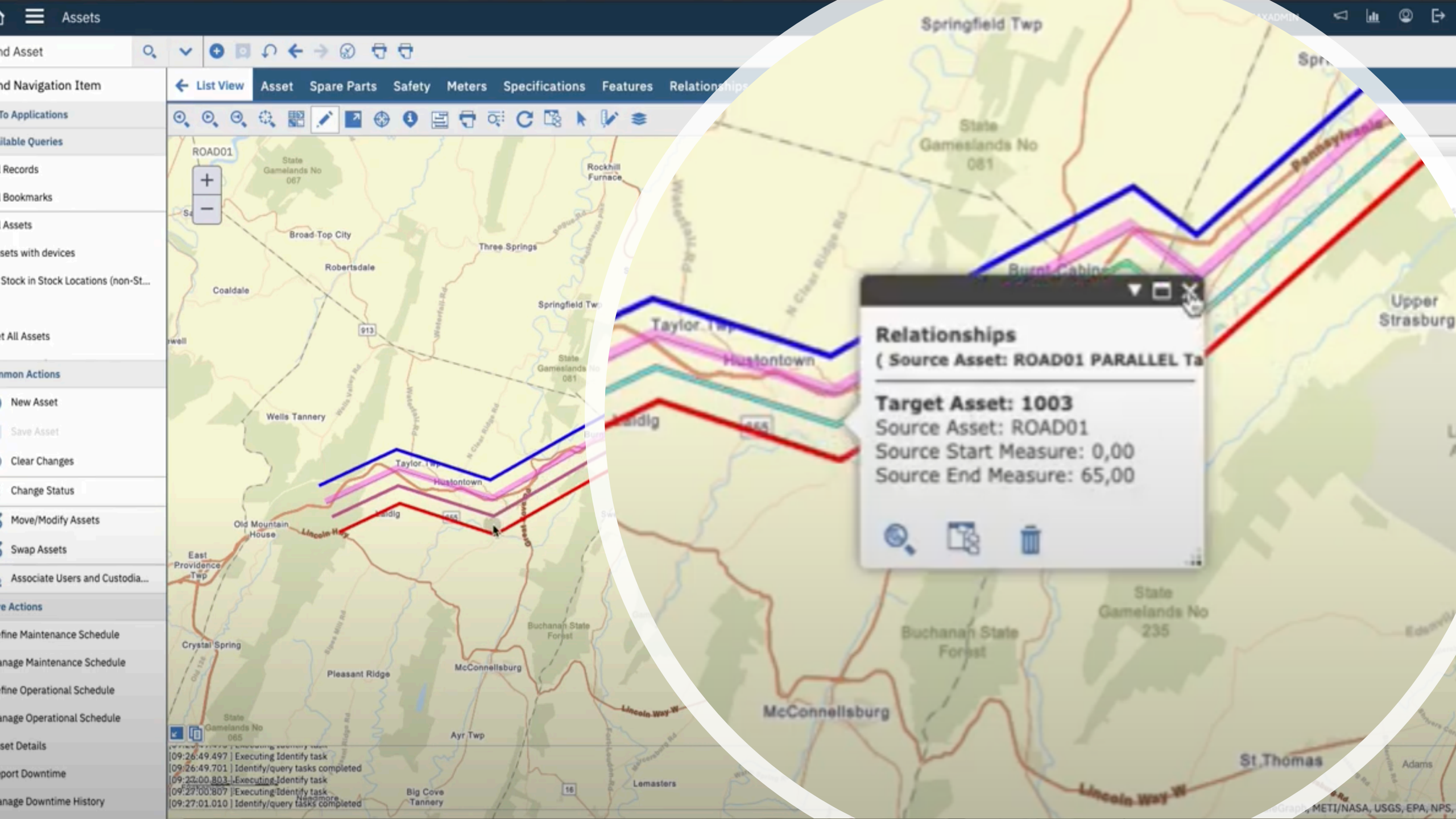
GIS Object

Select Layers

Linear Objects Updates

- **Visually identify linear segments that overlap on the map**
 - Overlapping linear segments are offset, so you can identify them more easily on the map.
- **Performance improvements when viewing linear data in the Linear Visual Controller**
 - The response time for filtering and viewing large sets of linear assets on the Linear Visual Controller has improved.

[illegible]



Assets

nd Asset

nd Navigation Item

To Applications

ilable Queries

Records

Bookmarks

Assets

sets with devices

Stock in Stock Locations (non-St...

nt All Assets

mon Actions

New Asset

Save Asset

Clear Changes

Change Status

Move/Modify Assets

Swap Assets

Associate Users and Custodia...

e Actions

fine Maintenance Schedule

ange Maintenance Schedule

fine Operational Schedule

ange Operational Schedule

set Details

port Downtime

ange Downtime History

List View

Asset

Spare Parts

Safety

Meters

Specifications

Features

Relationships

ROAD01

State Gamelands No 067

Broad-Top City

Robertsdale

Coaldale

Three Springs

Springfield Twp

State Gamelands No 081

Rockhill Furnace

Wells Tannery

Wells Valley Rd

913

Watershed Rd

Partridge Rd

N Clear Ridge Rd

Taylor Twp

Hustontown

Lincoln Hwy

East Providence Twp

Crystal Spring

Pleasant Ridge

McConnellsburg

Ayr Twp

Big Cove Tannery

Lincoln Way W

Lemasters

Springfield Twp

State Gamelands No 081

Burnt Cabin

Upper Strasburg

State Gamelands No 235

Buchanan State Forest

McConnellsburg

St Thomas

Adams

Lincoln Way W

Relationships

(Source Asset: ROAD01 PARALLEL Ta

Target Asset: 1003

Source Asset: ROAD01

Source Start Measure: 0,00

Source End Measure: 65,00

[09:26:49.497] Executing Identify task

[09:26:49.701] Identify/query tasks completed

[09:27:00.803] Executing Identify task

[09:27:00.807] Executing Identify task

[09:27:01.010] Identify/query tasks completed

Maps in Work Centers

- **Display a map within the Maximo Work Centers**
 - You can now display maps and use map tools in Maximo Work Centers such as Supervisor and Technician.

IBM Maximo Asset Management

Work Execution

Work Orders

Overdue (2)

Today (0)

Tomorrow (0)

Next 3-5 Days (0)

Completed (1)

All (9)

Search

Annual Hydrant Maintenance

PM 1210

Approved

Asset: HYD-024

Location: *Unspecified*

Scheduled start: 7/3/20 11:38 PM

Report Work

Start

Annual Hydrant Maintenance

PM 1208

Approved

Asset: HYD-0023

Location: *Unspecified*

Scheduled start: 7/3/20 5:51 PM

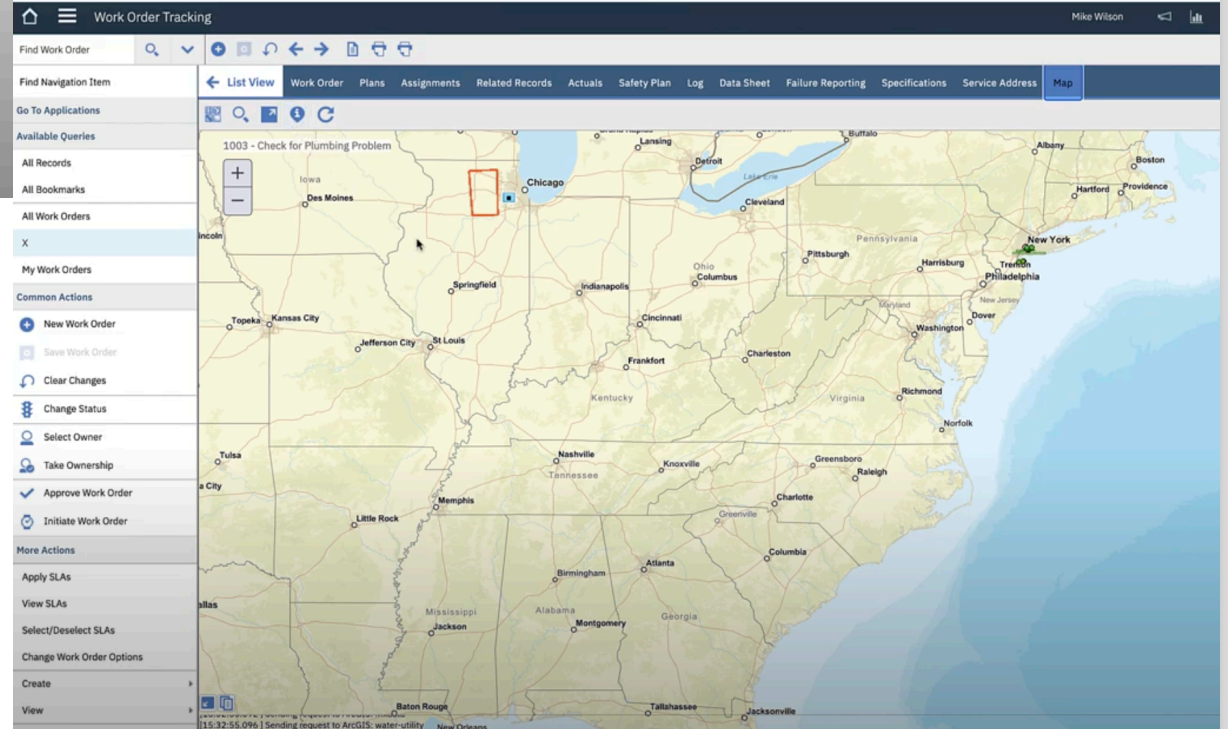
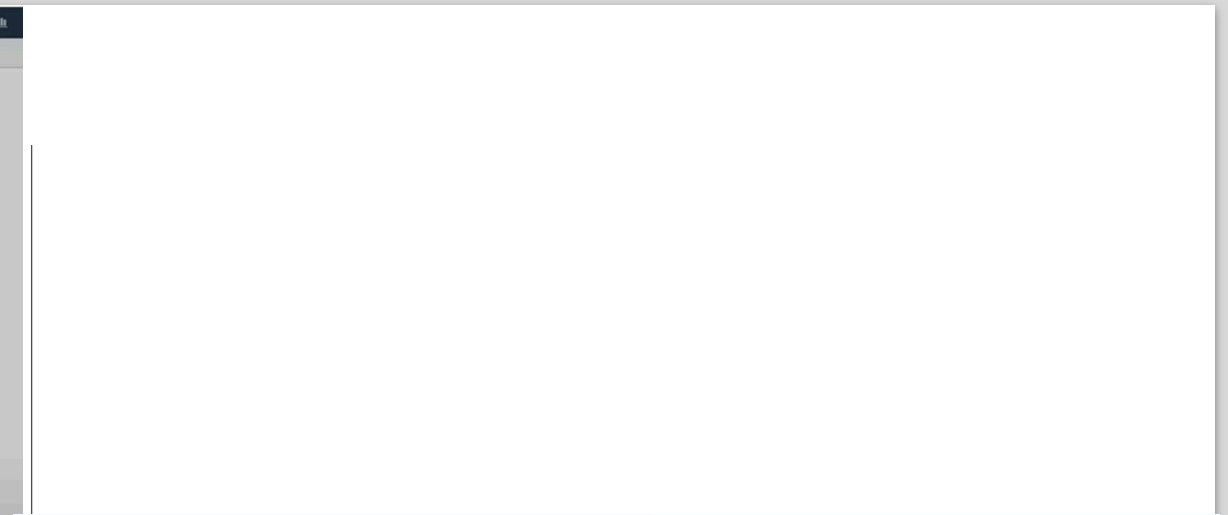
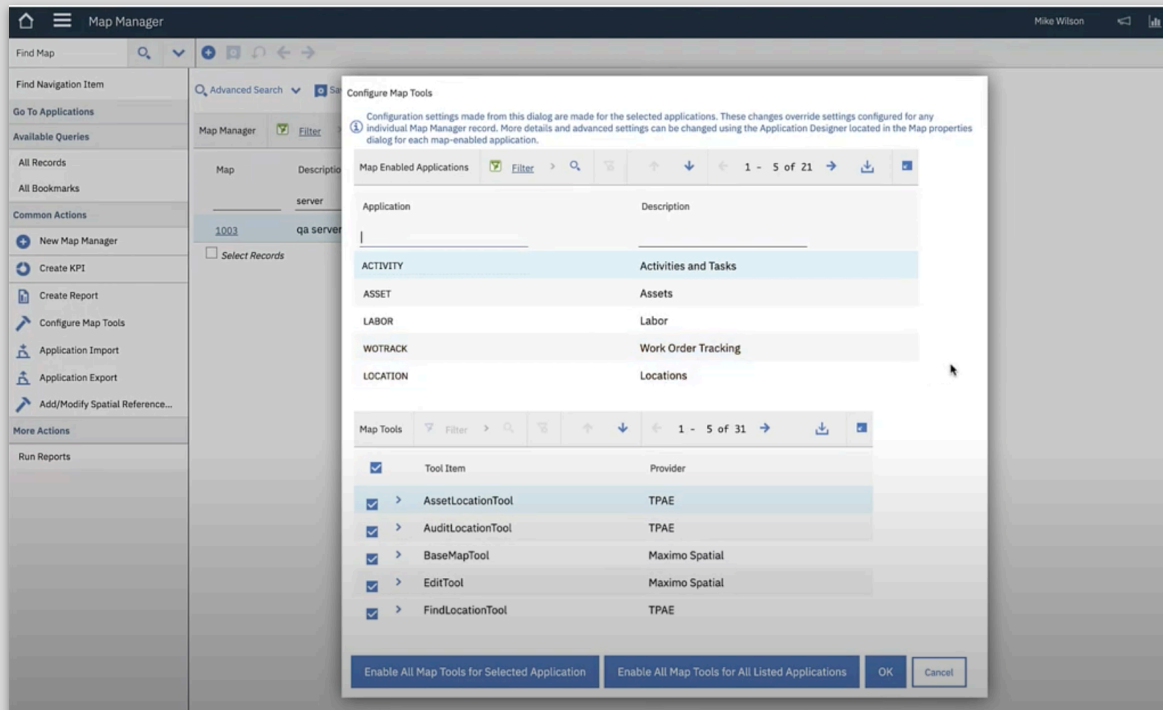
Report Work

Start

<https://www.youtube.com/watch?v=2R6UBsUE-QM>

Map Tool Enhancements

- **Map tools now display feature information in side card format**
 - View feature attributes in a side card that can be expanded or hidden from the map. This enhancement provides a view of the map without windows obstruction.
- **Enable map tools from Map Manager**
 - (Not just from App Designer as before)
- **More options for managing map features**
 - Configure properties to adjust the initial zoom level when you edit a feature.
 - Delete linked features from the edit tool and common actions menu.



<https://www.youtube.com/watch?v=goNWta68Nag>



1240-0016609 - SIGN, LEFT, ENG-I, 1240, P154



Edit



Signs



Edit Tool

Filtering Map Features

- **Filter data in Maximo Asset Management according to the filters configured in GIS**
 - Data that is filtered and restricted in GIS layers can be applied to linked records in Maximo.
- **Restrict data at the map layer level**
 - Signature options can be configured for each map layer from the Map Manager application. This feature gives system administrators finer control over the features that are displayed on multi-layer maps.

Data synchronization

- **ArcGIS online data synchronization support**
 - Synchronization between Maximo and ArcGIS is extended to online maps.

<https://www.youtube.com/watch?v=aNDfjn7RxwA>

Offline Mapping

- Offline map data on mobile devices is now synchronized directly with the IBM Maximo Asset Management server.
 - Downloading data from the Maximo server improves the time that it takes for map data to reach mobile devices. This enhancement also greatly increases the number of offline areas and features that can be managed.
 - System administrators can now manage replicas directly from the Map Manager application.

<https://www.youtube.com/watch?v=xRDwDr1ZIG8>

<https://www.youtube.com/watch?v=sAk91WspgP0>

Road Ahead



LBS

- OGC Compliance (OpenGIS standard for map services)
- Migration to Maximo Application Suite
- RFEs and general enhancements



Work Centers

- **New UI / UX (Graphite/Carbon)**
- **Map componente for technician applications**
 - Work Execution
 - Inspections
- **Configurable actions over map component**



Mobile

- Support to vectorized files (VTPK)
- **Workcenters in diconnected mode**

References:

What's New in 761 Knowledge Center:

https://www.ibm.com/support/knowledgecenter/SSG2D3_7.6.1/com.ibm.spl.doc/intro/c_new_features.html

Maximo Spatial Community:

https://community.ibm.com/community/user/communities/community-home?CommunityKey=a00221b0-8301-4644-8dbe-0d26b988ea0b&S_TACT=C43003RW

Map Manager Application:

https://www.ibm.com/support/knowledgecenter/SSG2D3_7.6.0/com.ibm.spl.doc/plussmngtr/t_create_config_map.html

Manage Map Tools

<https://www.ibm.com/support/pages/maximo-spatial-7601-series-3-getting-your-maps-ready>

Requirement Traceability Matrix:

<https://w3-connections.ibm.com/files/form/anonymous/api/library/7fe020bb-d2a3-450d-abe1-549545263036/document/be42a2d4-a55d-47bb-8406-1b44cd6d6bbf/media/LBS%20-%20Requirement%20Rastreability%20Matrix.mm.html>

Installers, Bin, Licenses....

https://w3-connections.ibm.com/wikis/home?lang=en-us#!/wiki/W4114c208f0c6_4e68_a0f5_00e1bfe93a3e/page/LBS%20Installers%2C%20Bin%20and%20License%20Files

Mobile:

<https://www.ibm.com/support/pages/how-configure-maximo-spatial-maps-mobile-devices>

ArcGIS Documentation:

<https://enterprise.arcgis.com/en/server/latest/get-started/windows/about-arcgis-server-documentation.htm>

Map Toolbar

https://www.ibm.com/support/knowledgecenter/SSG2D3_7.6.0/com.ibm.spl.doc/maps/r_map_toolbar.html

YouTube:

https://www.youtube.com/playlist?list=PLv72XUMPeVgM_SNwu9HoRjxp1xZPeCZT8

https://www.youtube.com/channel/UCJGFt9QBL4_HWYVdXMjLLWg/

Obrigada!

