



IBM Workload Automation on Cloud V10.1

Technology for the
new normal, **today.**

Automate More, Automate Better

Grace Williamson

IBM Product Manager, IBM Workload Automation

Marco Cardelli

HCL Product Manager, IBM Workload Automation

Pasquale Peluso

HCL Software Engineer, IBM Workload Automation

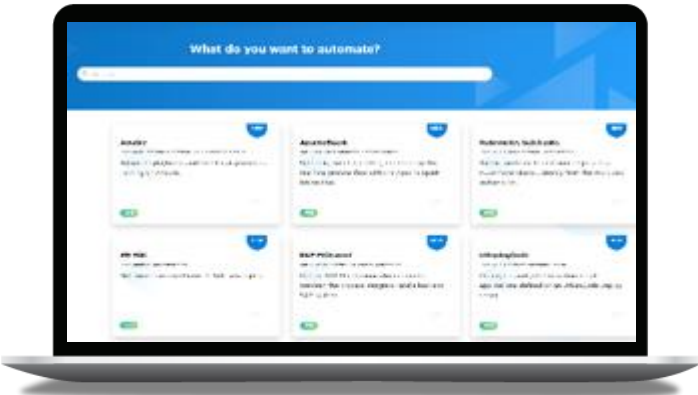
July 7, 2022



Agenda

- Workload Automation Overview
- V10.1 New Features
- Workload Automation on Cloud
- Demo

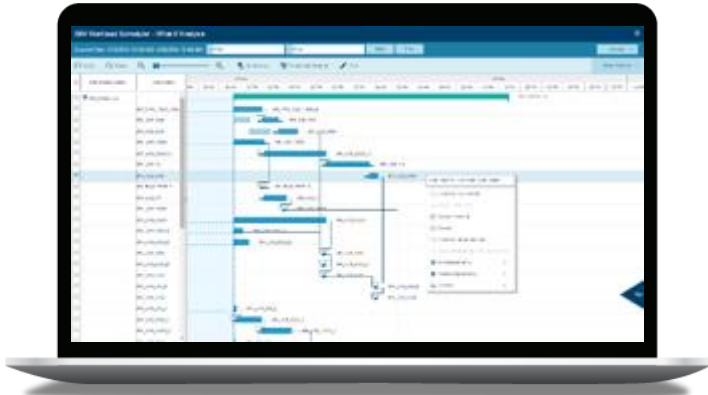
ORCHESTRATE THE DIGITAL TRANSFORMATION FROM A CENTRALIZED POINT OF CONTROL
TO ENSURE BUSINESS AVAILABILITY AND RESILIENCE ...



**Connect & De-Risk with
an Ecosystem of Integrations**



**End-to-End Orchestration and
Control Business Views**



**Predict & Guarantee
SLA compliance**



... RUN ANYWHERE FROM ON PREMISES TO KUBERNETES



IBM Workload Automation - Unique Features

The only Automation Solution Fully Exploiting Containerization



Deploy all IWA components on containers and manage containerized applications

Orchestrate your Business-Critical Processes



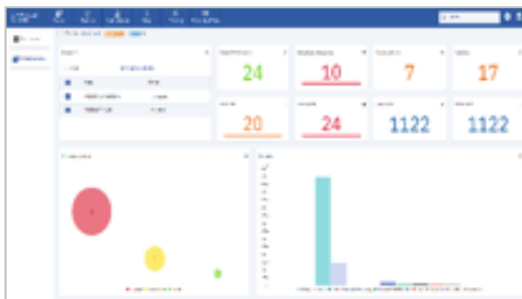
Find all the integrations to orchestrate your IT ecosystem in the Automation Hub

Mainframe Matters



Easy access with ZOWE, integrations with REST API full support, enhanced predictive scheduling

Enable business control



Make real-time data-driven decisions with new dashboards, advanced analytics and What-If

Delegate business control



Workload Folders for greater business agility and enforced security at LOB level

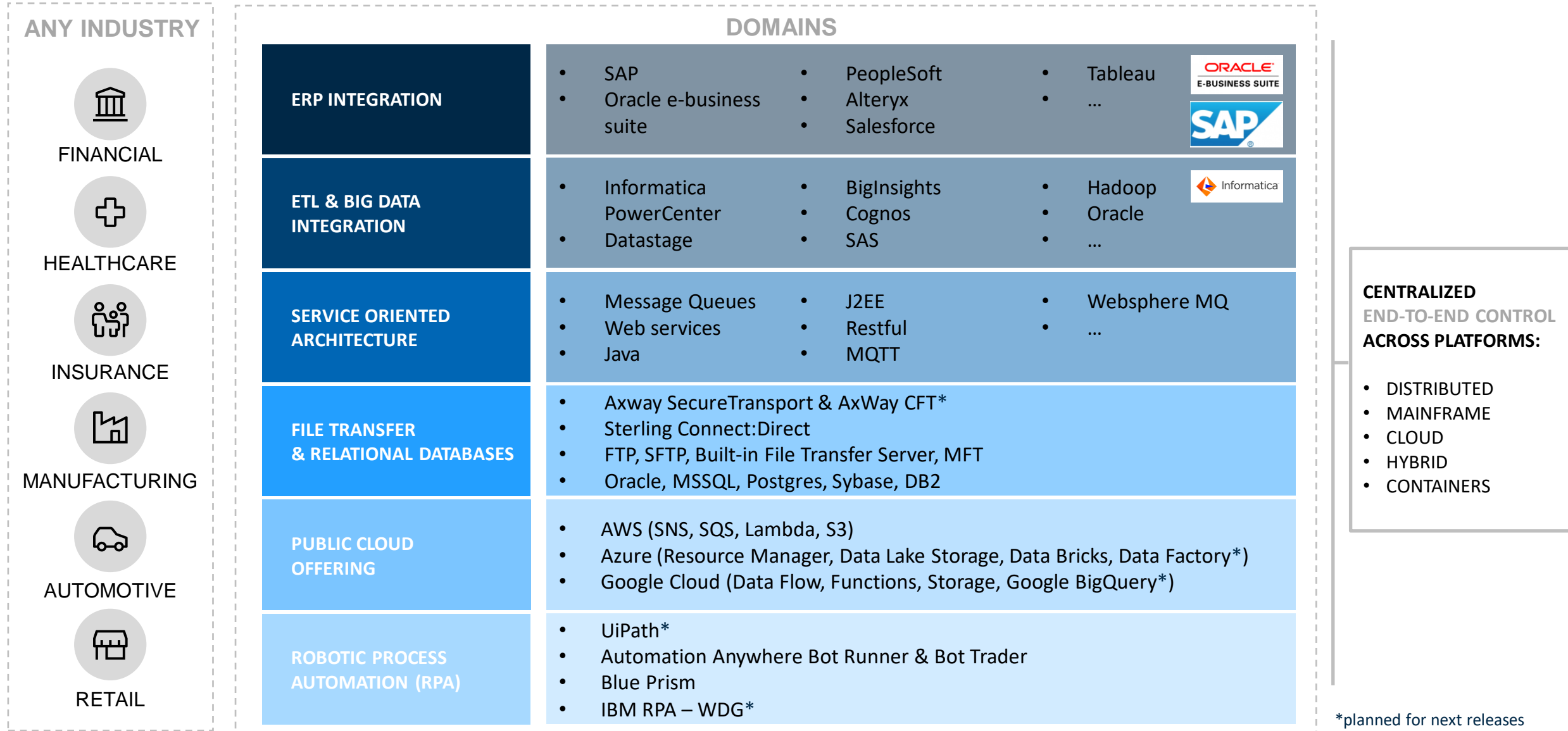
Lowest TCO on the Market



Lightweight architecture, simplified
maintenance and ROI oriented pricing
based on real product usage

80+ Out-of-the-Box Plugins – Available for SaaS

all Inclusive /no additional charge
<http://www.yourautomationhub.io>



+ Free Development Kit for customers and business partners to develop their own plugins

Integrates seamlessly with any business application supporting industry-standard interfaces: {rest:api} - java - j2ee- jsr352 java batch - mq



Enhanced operational experience

AI driven analysis and observability on WA data

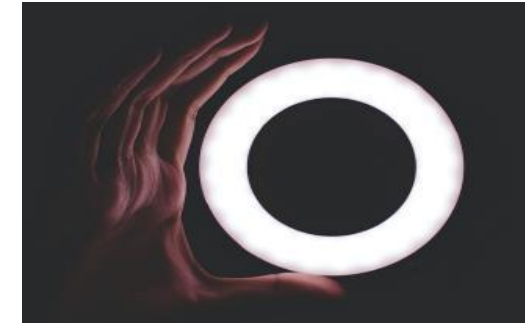
- Anomaly detection for WA workloads with a new component included to provide AI intelligence
- Enable WA to be observable and integrate with IBM Instana and Watson AIOps



Optimize data transfers and processing

Integrate the file transfer operations in your automation workflows

- Move your files between agents and connect them to your business processes
- Integrate in your workflows your current MFT, RPA and big data tools and get centralized monitoring



One-stop automation modelling

Bridge IT and business applications with intuitive design

- New Workload Designer with single UI to develop your workflows
- Get ready and automate faster with contextual help
- Mobile first self-service UI DevOps ready

Optimize data transfers

Source path	Source file	Destination file	Status	Progress	Last update	Size	Speed	Remaining time	Elapsed time	Average speed
/home/tullio/MFT/Si	FT12.txt	FT12__2020091510	DONE	100%	2020-09-15 12:18:31	68.00 B/68.00 B	0.00 B/s	0s	0s	0.00 B/s
/home/tullio/MFT/Si	BIG_1.zip	BIG_1__2020091510	DONE	100%	2020-09-15 12:19:07	580.25 MB/580.25 MB	0.00 B/s	0s	37s	15.24 MB/s
/home/tullio/MFT/Si	FT11.txt	FT11__2020091510	DONE	100%	2020-09-15 12:18:31	68.00 B/68.00 B	0.00 B/s	0s	0s	0.00 B/s
/home/tullio/MFT/Si	FT10.txt	FT10__2020091510	DONE	100%	2020-09-15 12:18:31	68.00 B/68.00 B	0.00 B/s	0s	0s	0.00 B/s

Auto refresh

🔄 27 seconds

Workflow actions

🔄 Refresh ⚙️ Filter

🔄 Restart all ⚙️ Resume all

📄 Transfer Details

Task actions

🔄 Restart selected ⚙️ Resume selected

⏸ Stop selected ⚙️ Failure reason

Job Information

Job: FTPS_SEND_STOP_0001

Workstation: /LNX113_1

Job stream: JOBS

Internal status: SUCC

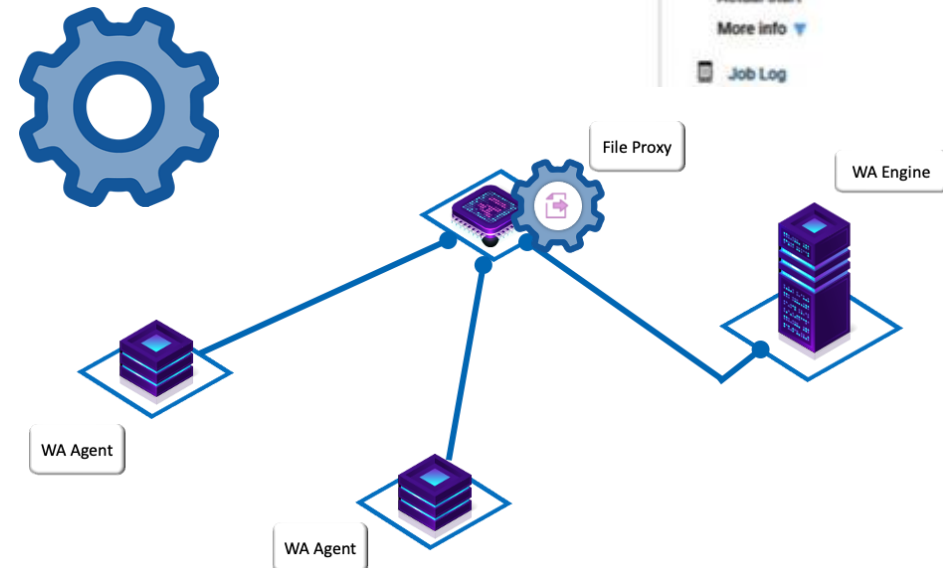
Actual start: 9/15/2020 12:18 PM CEST

More info ▼

📄 Job Log ▶️ Rerun Job

Manage your File Transfer operations with agent-to-agent protocol for distributed and mainframe engines

- New File Proxy component to manage secure file transfer
- Deployable with traditional installation or on container
- Available as stand-alone component or installed with the distributed server (only for distributed engine)
- Manages file transfer for dynamic or z-centric agents
- As stand-alone can be configured in high availability





NEW WORKLOAD DESIGNER

The new Workload Designer provides a **streamlined single point of control** for the design of WA objects, based on security authority for each object, including Workstations, Event Rules, and an integrated Workload Application Template import definition

UNIFIED WORKLOAD AUTOMATION OBJECT DEFINITION: IMPROVEMENTS



Improved **search**
functionality



Object listing, based on
hierarchical views (folders)



Multiple object
editing at same time

IWA on Cloud provides an enhanced user experience

On-premise reliability meets cloud flexibility

- IWA on Cloud that customers know offers **enhanced features** with V10.1 release
- **Improved high availability** with two data centers across three regions
- **Workload Automation entry point:** Ideal for small – medium enterprise customers
- **Quick implementation** to achieve value

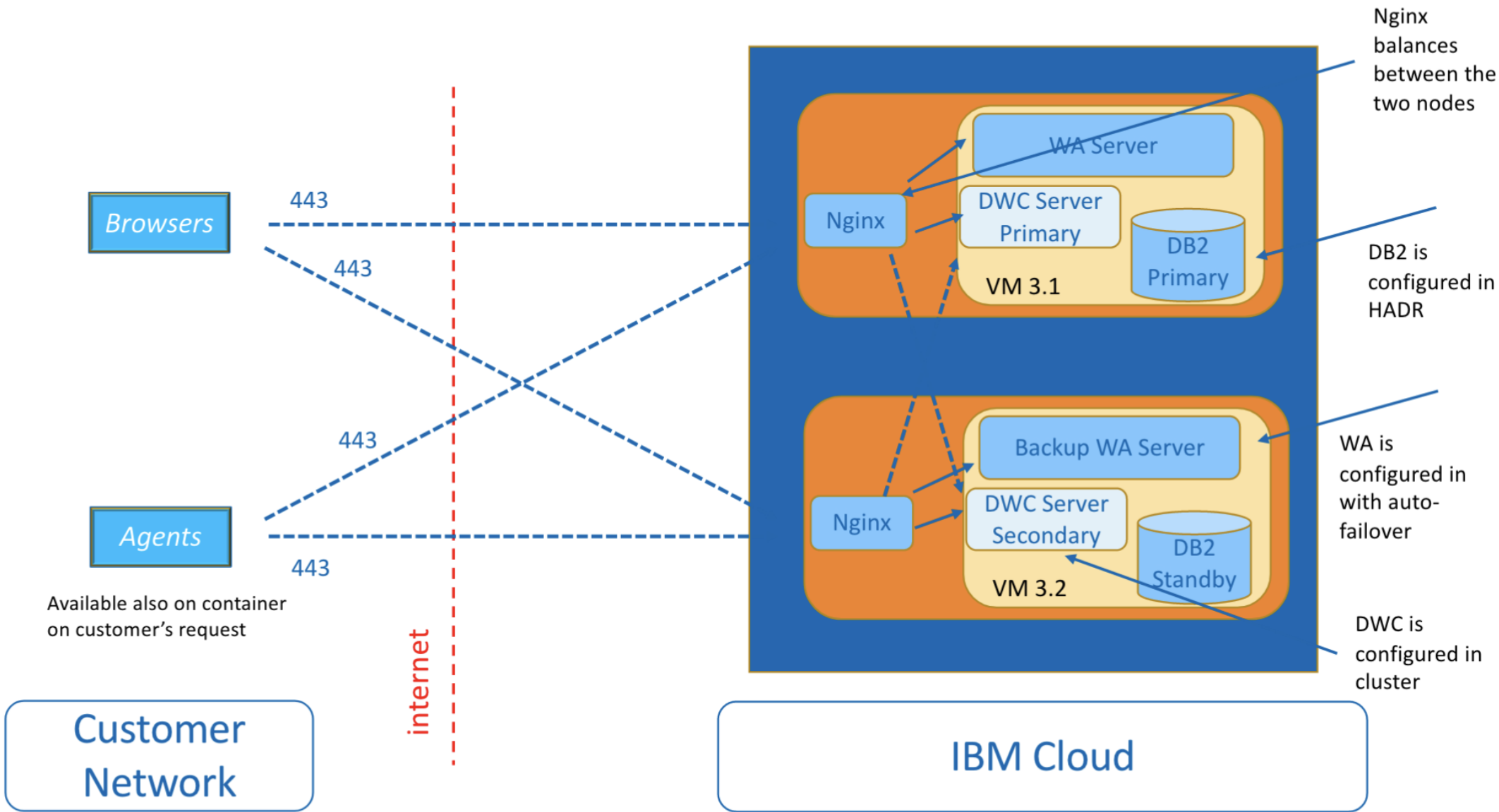
Enhanced features:

- **Workflow folders** eliminates any prefix for clients' database objects
- **Security delegation** applied to folders enables multiple roles for the tenancy users
- **Improved high availability** with the deployment of controllers in different data centers
- All **Automation Hub** integrations plug-ins can be leveraged
- **New managed file transfer** capabilities & the new Workload Designer are available **June 30, 2022**



IBM Workload Automation on Cloud configurations & characteristics

Categories	Features	IWA on Cloud (Multi-tenant)
Administration	Server Deployment	Server deployment and administration on HCL/IBM team
	Agent Deployment	Agents downloaded by customers and deployed to their environments
	Configuration	Fixed for all customers
Interfaces	Web / Mobile	Dynamic Workload Console, Self-Service Catalog on mobile
	Command lines	No conman (Remote command line in plan), no Optman
Event Driven	Event Driven	Limited actions
Execution	Agents	Dynamic agents (no FTAs)
	Dynamic scheduling	Static pools



Enhance Operational Experience

- Empower the dynamic agents with a remote command line
- A GO-based command line to operate with job streams and jobs in plan
- Remote command line automatically installed with the dynamic agents

Data Pipelines Optimization

- Enhance the new Managed File Transfer based on customer requirements
- Integrate with File Gateway tools for external file transfer
- Integrate with more MFT, RPA and Big Data cloud services to provide optimization and centralized monitoring

Cloud native
Workload
Automation

Connect IT and business applications with no-code modelling

- Renewed Self-Service Catalog integrated in the Workload Designer
- Catalog tagging options and filtered queries
- Import/Export in WAT format as part of the job stream
- Multi-job streams' graphical view
- Create more Automation Hub job plug-ins to enable the expansion and orchestrate new automation domains

New SaaS offerings

- Enhance the current multi-tenant offering to be more flexible
- Single-tenant environment for up to 200K jobs per month
- Premium SaaS offering with single-tenant environment and special configuration to support >1M jobs per month

IBM Workload Automation

Optimize and automate complex workloads
for greater IT efficiency

Start a free trial



Contact us



See product documentation →

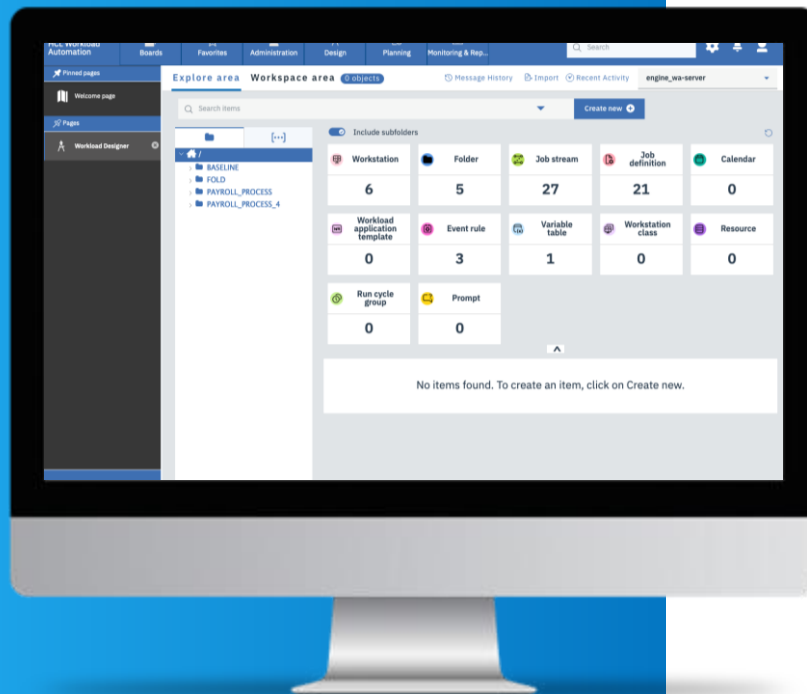
30-day free trial

- IBM offers a 30-day trial for the full product functionality
- Offering is associated to an IBM ID and access is regulated through the IBM ID authentication
- Some examples allow testing of more complex scenarios with applications or flows

UI Evolution



New Workload Designer



New Workload Designer will provide a **single point of control** for designing WA objects that is:

- Drastically simplified
- Based on security authority for each object
- Used to modify every definition, including:
 - Workstations
 - Event Rules
 - Import of Workload Application Templates

Explore area Workspace area 1 object Message History Import Recent Activity engine_wa-server

Search items

Create new +

Include subfolders

Job stream Job definition Calendar

Unlock View Edit Duplicate

2 Columns

	Lock	Workstati...	Folder	Name	Ta	Modified ...
		SERVER_XA	/	STARTAPPS...	OTH	wauser
		/WA-SERVER_XA	/	SWITCHPLAN	OTH	wauser
		/WA-SERVER_XA	/	UPDATESTA...	OTH	wauser
		/WA_AGT	/	COMPOSER	UND	wauser
		/WA_AGT	/	JOB1	executable	wauser
		/WA_AGT	/	JOB_CRIT1	executable	wauser
		/WA_AGT	/	JOB_CRIT2	executable	wauser
		/WA_AGT	/	JOB_CRIT3	executable	wauser
		/WA_AGT	/	MET	filetransfer	wauser

Items per page: 25 | 1-21 of 21 items 1 of 1 pages

Folder

Job definition

Job stream

Prompt

Resource

Calendar

Run cycle group

Variable table

Event rule

Workload application ...

Workstation

Workstation class

User

Domain

Explore Area

- More responsive fast and fluid user interface
- Full picture of folders and Workload Definition status
- Highly Customizable by User

Workspace Area

- Single point of access for all WA Objects
- Vertical layout to simplify Object editing
- Quick and easy way to switch among objects
- Increased focus on most relevant actions

The screenshot displays the HCL Software Workspace Area interface. The top navigation bar includes 'Explore area' and 'Workspace area' (selected), with a '8 objects' indicator. A search bar and 'Create new' button are also present. The main panel shows a list of objects, including 'JS_CRIT_10' and 'JS_CRIT_1'. The 'JS_CRIT_10' object is expanded, showing its 'Dependencies', 'Run Cycles', and 'Jobs' sections. The 'Jobs' section lists several jobs with their dependencies. The right sidebar shows the 'PROPERTIES' tab for the selected object, with fields for 'Folder' (/BASELINE/), 'Name' (JS_CRIT_10), 'Workstation' (/WA_SAGT), 'Draft' (toggle), 'Valid from' (calendar), 'Description' (Added by composer), 'Variable table', 'Monitored' (toggle), and 'Comments'.

A large, light blue, semi-transparent triangle is positioned on the left side of the slide, pointing towards the center. It has a gradient and is layered over the solid blue background.

DEMO

Managed File Transfer

[illegible]



File Proxy is a new Workload Automation component that manages the transfer of files with high security.



Embedded File Proxy

Standalone File Proxy



Embedded File Proxy



Installed automatically with WA Server

Provides the new Agent to Agent Protocol
on a distributed environment

Manages files to be transferred securely

Automatically configured in Active/Active
High Availability

Standalone File Proxy



Installed as Standalone Component

Provides the new Agent to Agent Protocol
with a distributed or z/OS environment

Manage files to be transferred securely

Offloads file transfer workload from WA
Server

Can be installed with multiple replicas for
High Availability and Scalability

Search on Remote file systems

Search file(s)

sourceFiles

Select a file to transfer.

☐

/tmp/.font-unix

☐

/tmp/.X11-unix

☐

/tmp/.Test-unix

☐

/tmp/.XIM-unix

☐

/tmp/.ICE-unix

☐

/tmp/wa10.1.0.00

☐

/tmp/systemd-private-e2854ba16a1243eebb97f1b5e9fec3dc-vmtoolsd.service-h7JWIK

☐

/tmp/logs

☐

/tmp/installation

☐

/tmp/dblighttool

☐

/tmp/ssl

☐

/tmp/a12320

Cancel

Ok

Transfer settings

RECEIVE

Local user

wauser

Local password

☒ Password

☐ User

☐ Agent user

☐ Variable

.....

Source files

Start searching from

/tmp

Search file(s)

Source file(s)

Name

+

THANK YOU!

Contact us for more information or to schedule a demo

grace.williamson@ibm.com Grace Williamson,
IWA Product Manager

marco.cardelli@hcl.com Marco Cardelli,
HCL WA Lead Product Manager

