

# IBM Database Conversion Workbench 4.0

## *Installation & Quick Start Guide for Windows*

**Version:** 1.0

**Last Updated:** Jan 19, 2020



Table of Contents

1 Introduction..... 3

2 IBM Database Conversion Workbench Full-Client..... 3

    Requirements..... 3

    Download Database Conversion Workbench Full-Client..... 3

    Quick Start Guide..... 4

    Start the application..... 4

        Choose a Workspace..... 4

        Welcome Page ..... 5

        Working with Cheat Sheet..... 7

3 Access the Help System ..... 8

## 1 Introduction

The IBM® Database Conversion Workbench (DCW) is a no-charge application that offers several tools for converting your databases to IBM DB2 for Linux, UNIX and Windows and IBM Db2 Warehouse.

Database Conversion Workbench 4.0 is available as a full client, which includes all the database conversion features, or as a lite client, which includes only the SQL evaluation and conversion functions. **Go to section 2.** [IBM Database Conversion Full-Client](#) to learn more about its usage.

## 2 IBM Database Conversion Workbench Full-Client

### Requirements

The following requirements must be met:

- **Operating System**
  - Windows
- **Oracle JDBC® driver (required for access to Oracle databases)**
  - Needs to be downloaded separately and installed on the same machine where Database Conversion Workbench is installed
  - Required to connect to Oracle databases
- **DB2/ IBM db2 Warehouse JDBC driver (required for access to DB2/IBM Db2 Warehouse databases)**
  - Download the driver from here: [IBM Data Server Driver for JDBC and SQLJ \(JCC Driver\)](#)
  - Download it on your computer

### Download Database Conversion Workbench Full-Client

1. Download Database Conversion Workbench from [IBM Database Conversion Workbench](#).
2. Select the latest Database Conversion Workbench version.
3. Select IBM\_DCW\_Full\_Client\_<platform>\_<version>.zip
  - Eg. *IBM\_DCW\_Full\_Client\_Windows\_4.0.zip*
4. Extract the contents of the .zip file to a chosen directory.

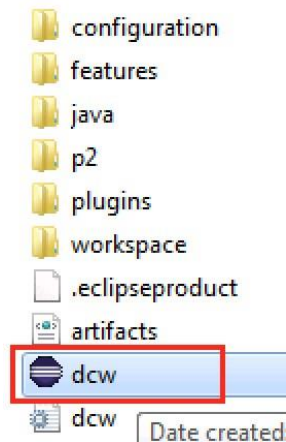
To learn more about the Database Conversion Workbench usage and functionality, go to heading [Quick Start Guide](#).

## Quick Start Guide

In this section, you will learn how to quickly get started using Database Conversion Workbench with your database.

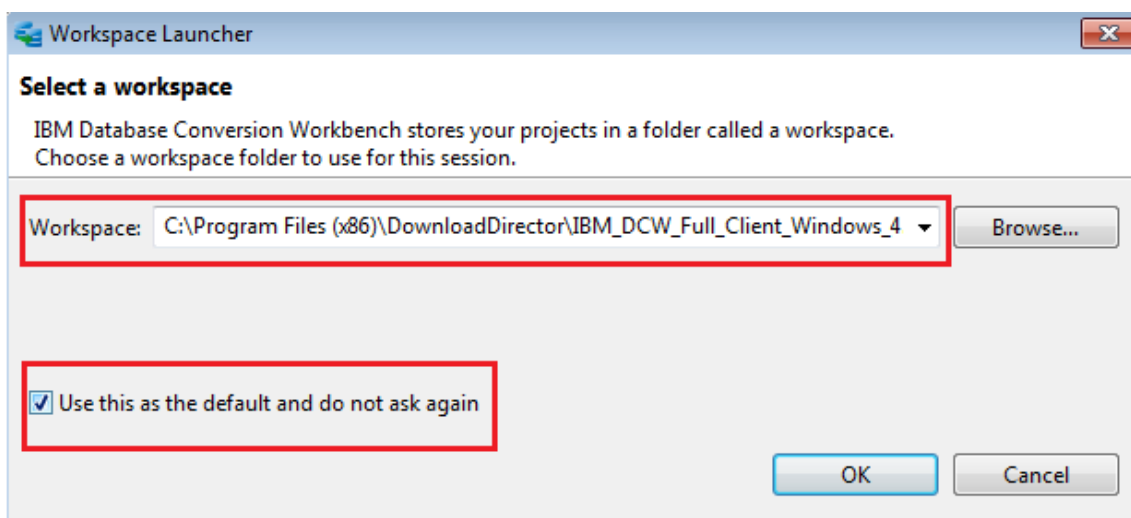
### Start the application

Go into the folder where you extracted the zip file contents and you will see the executable named **dcw**. Double-click on the **dcw** executable.



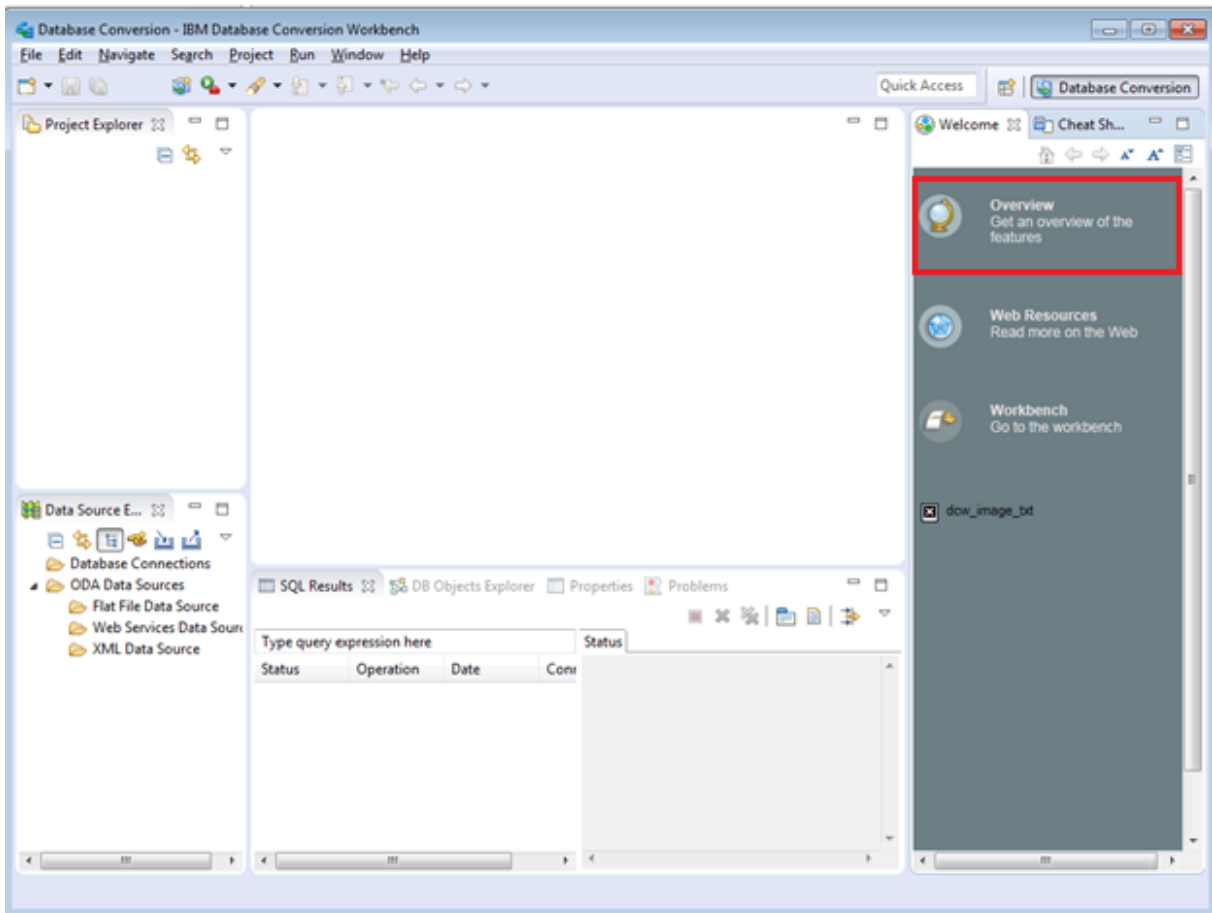
### Choose a Workspace

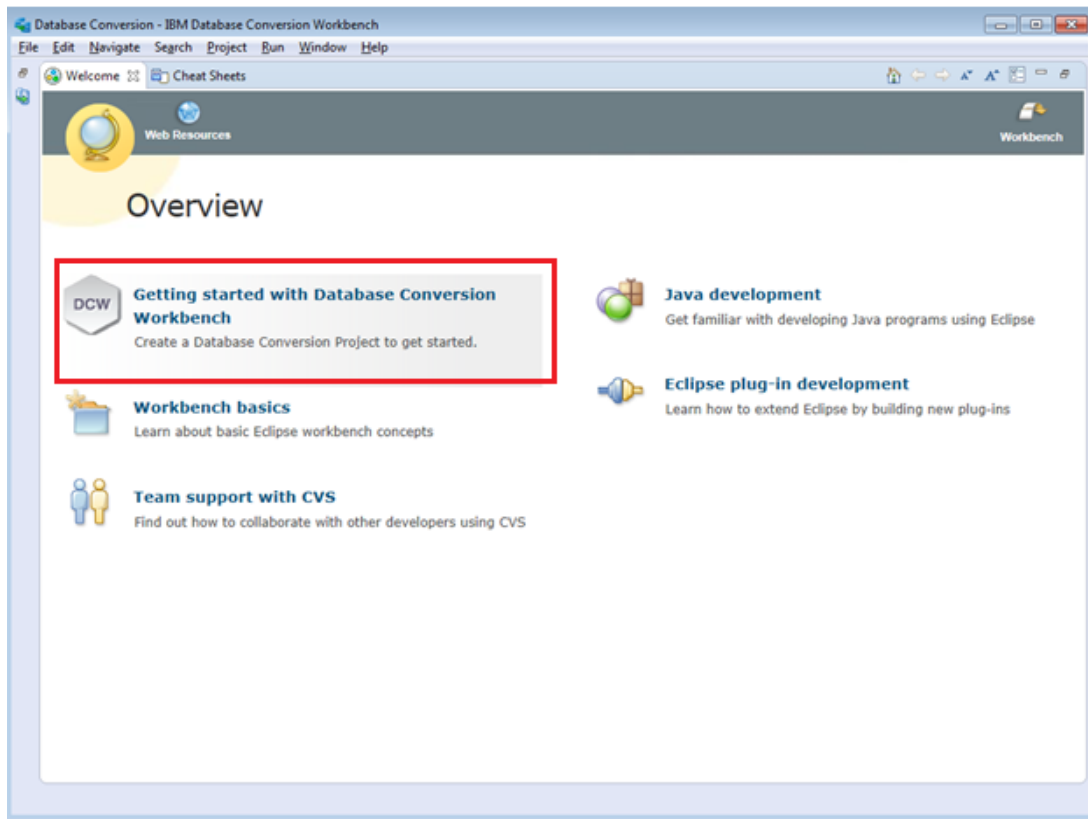
You will be asked to choose a directory where your workspace is created. The workspace is where all files and projects you create will be stored. Click OK to continue.



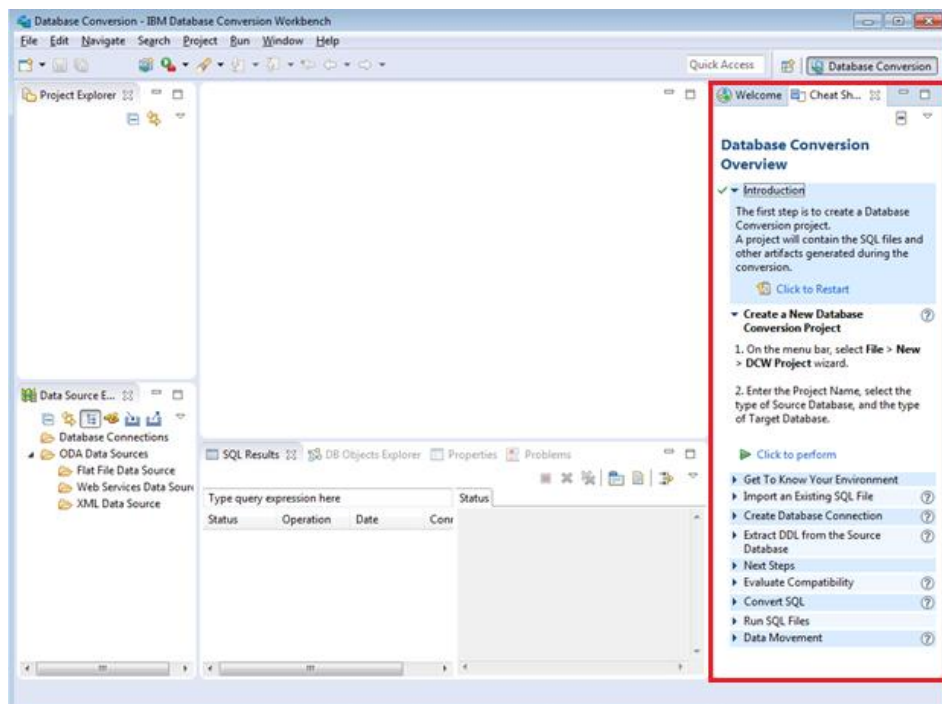
## Welcome Page

Once you've chosen a workspace, Database Conversion Workbench will open up and you will see a Welcome Screen. On the Welcome Screen, **Overview Page**, Click on **Getting started with Database Conversion Workbench**.





On the right-hand side, you will see a Cheat Sheet, which describes how to start using Database Conversion Workbench. We suggest that you complete the Cheat Sheet to get familiar with the environment and how to use the database conversion functions.



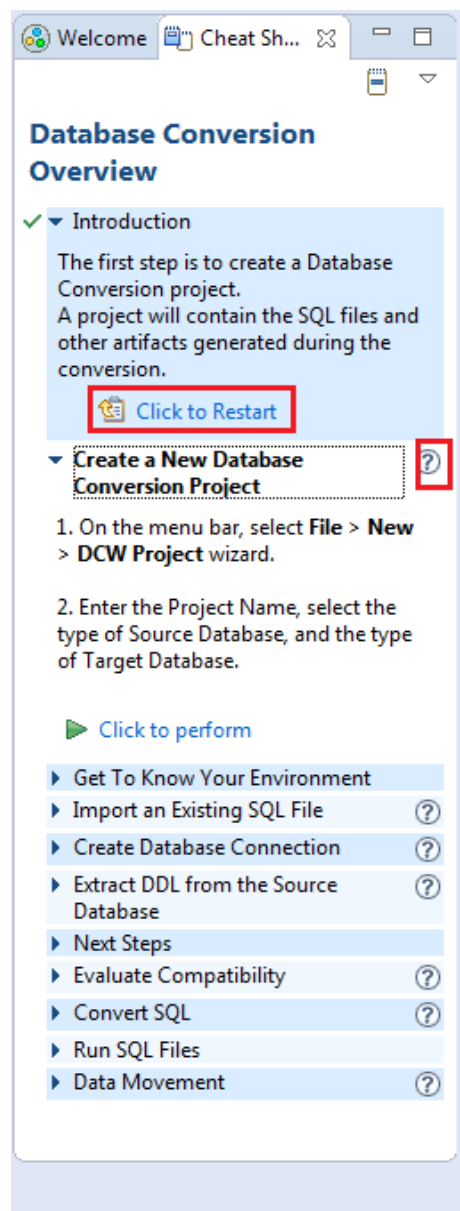
## Working with Cheat Sheet

To start working with the cheat sheet, click on “Click to Restart”.

To navigate the cheat sheet, finish a certain task and it will be automatically marked as completed. Continue through the tasks by performing one of the commands you come across:

- Click to perform
- Click when complete
- Click to skip

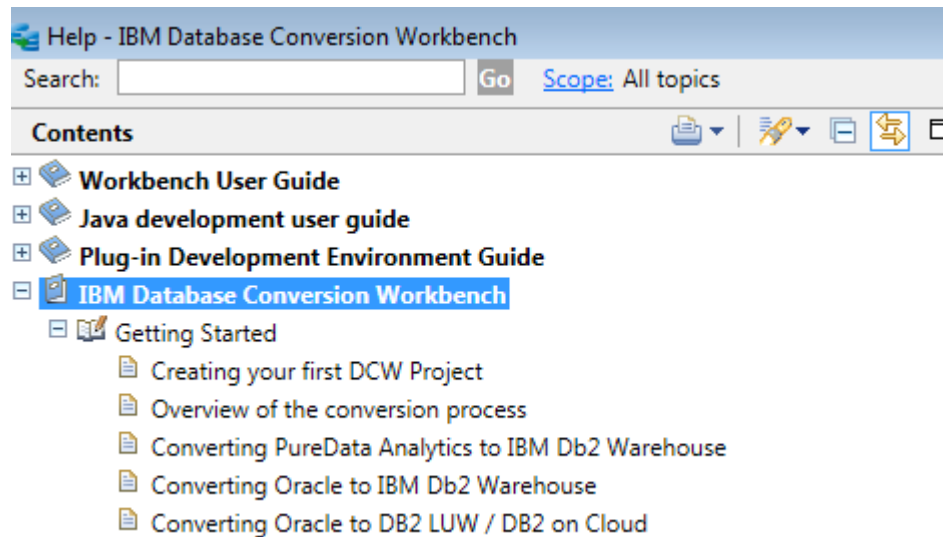
To learn more information about a task, you will see a question mark near the task heading. Clicking on the question mark will redirect you to the Help page.



### 3 Access the Help System

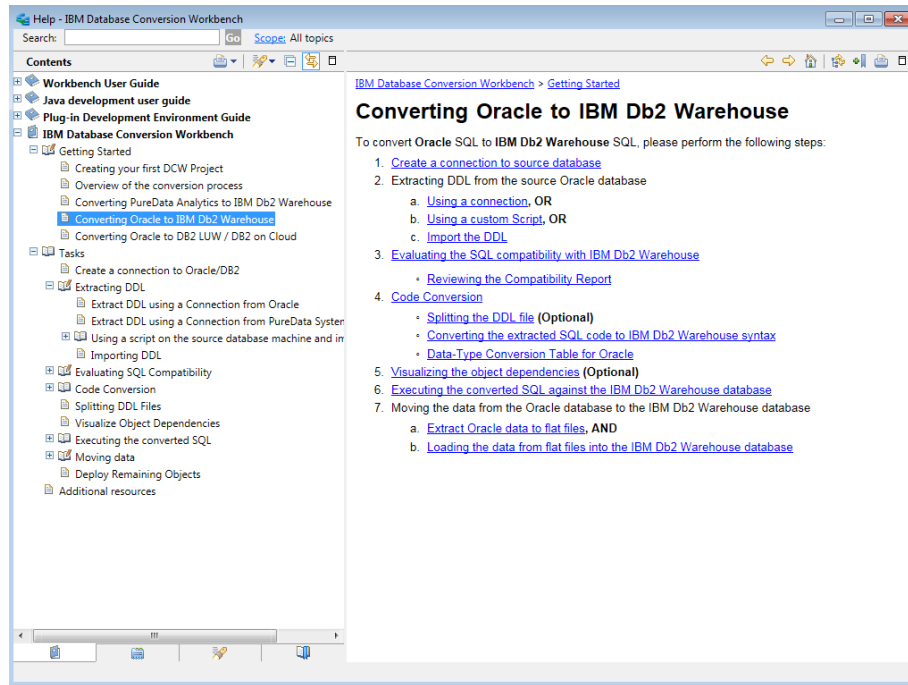
Database Conversion has detailed step-by-step information on how to use its many features. Follow these steps on how to navigate the Help system.

1. Once your Database Conversion application is launched, on the menu bar, select **Help > Help Contents**
2. This will display the window titled **Help – IBM Database Conversion Workbench**. Select the plus (+) sign on the last item titled **IBM Database Conversion Workbench**
3. You will see many subtitles within the main item **IBM Database Conversion Workbench**. Within each sub-item, you can find extensive details on a task.



- a. For example, if you want to find details on how to convert the database from Oracle to IBM Db2 Warehouse, you would double-click on the following items sequentially:
  - i. *IBM Database Conversion Workbench*
  - ii. *Getting Started*
  - iii. *Converting Oracle to IBM Db2 Warehouse* – this will provide you details (ie. Further links or information on how to perform this task). When you click on a link it will redirect you to one of the pages within this Help system.







© Copyright IBM Corporation 2018 All Rights Reserved.

IBM Canada  
8200 Warden Avenue  
Markham, ON  
L6G 1C7  
Canada

IBM, the IBM logo, and ibm.com are trademarks or registered trademarks of International Business Machines Corporation in the United States, other countries, or both. If these and other IBM trademarked terms are marked on their first occurrence in this information with a trademark symbol (® or ™), these symbols indicate U.S. registered or common law trademarks owned by IBM at the time this information was published. Such trademarks may also be registered or common law trademarks in other countries. A current list of IBM trademarks is available on the Web at "Copyright and trademark information" at [ibm.com/legal/copytrade.shtml](http://ibm.com/legal/copytrade.shtml).

Oracle and JDBC are trademarks or registered trademarks of Oracle Corporation in the United States, other countries, or both.

Linux is trademark or registered trademark of Linux Torvald in the United States, other countries, or both.

Other company, product and service names may be trademarks or service marks of others.

References in this publication to IBM products and services do not imply that IBM intends to make them available in all countries in which IBM operates.

No part of this document may be reproduced or transmitted in any form without written permission from IBM Corporation.

Product data has been reviewed for accuracy as of the date of initial publication. Product data is subject to change without notice. Any statements regarding IBM's future direction and intent are subject to change or withdrawal without notice, and represent goals and objectives only.

THE INFORMATION PROVIDED IN THIS DOCUMENT IS DISTRIBUTED "AS IS" WITHOUT ANY WARRANTY, EITHER EXPRESS OR IMPLIED. IBM EXPRESSLY DISCLAIMS ANY WARRANTIES OF MERCHANTABILITY, FITNESS FOR A PARTICULAR PURPOSE OR NON-INFRINGEMENT.

IBM products are warranted according to the terms and conditions of the agreements (e.g. IBM Customer Agreement, Statement of Limited Warranty, International Program License Agreement, etc.) under which they are provided.