

IBM SevOne Network Performance Management

Mario Robers – IBM SevOne NPM
Senior Systems Engineer

mrobers@sevone.com

+31 6 2992 0727



IBM SevOne NPM – *Network Performance Management*

- SevOne Founded in the USA in 2005
 - Bulgarian Founders
 - Developed out of Necessity
- Introduced in Europe in 2011
 - Acquired by Turbonomic in late 2019
 - Acquired by IBM in mid 2021

70% of the top **Global Carriers**

50% of the top **Global Banks**

40% of the top **Global MSP's**

Gartner MQ Visionary

Applications are the business.

And businesses are going through a digital transformation.



Engage More Customers



Generate More Revenue



Require More Customization



Establish Greater Differentiation

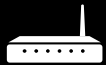
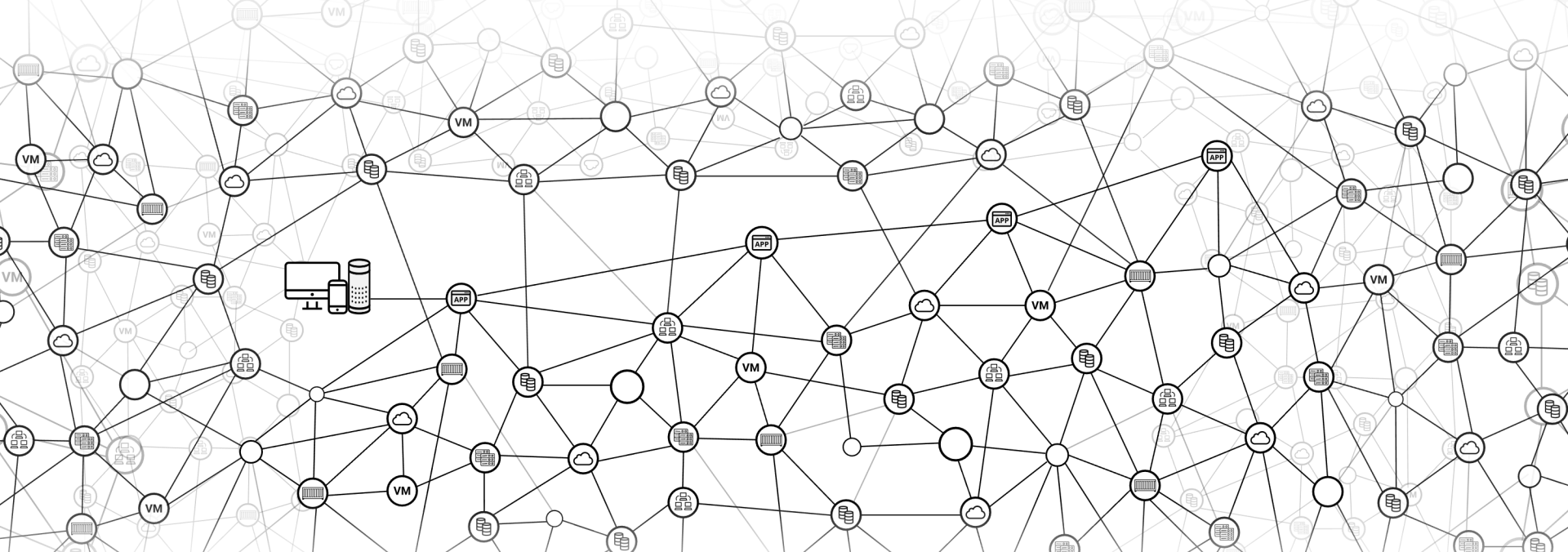


Drive Stronger Customer Loyalty



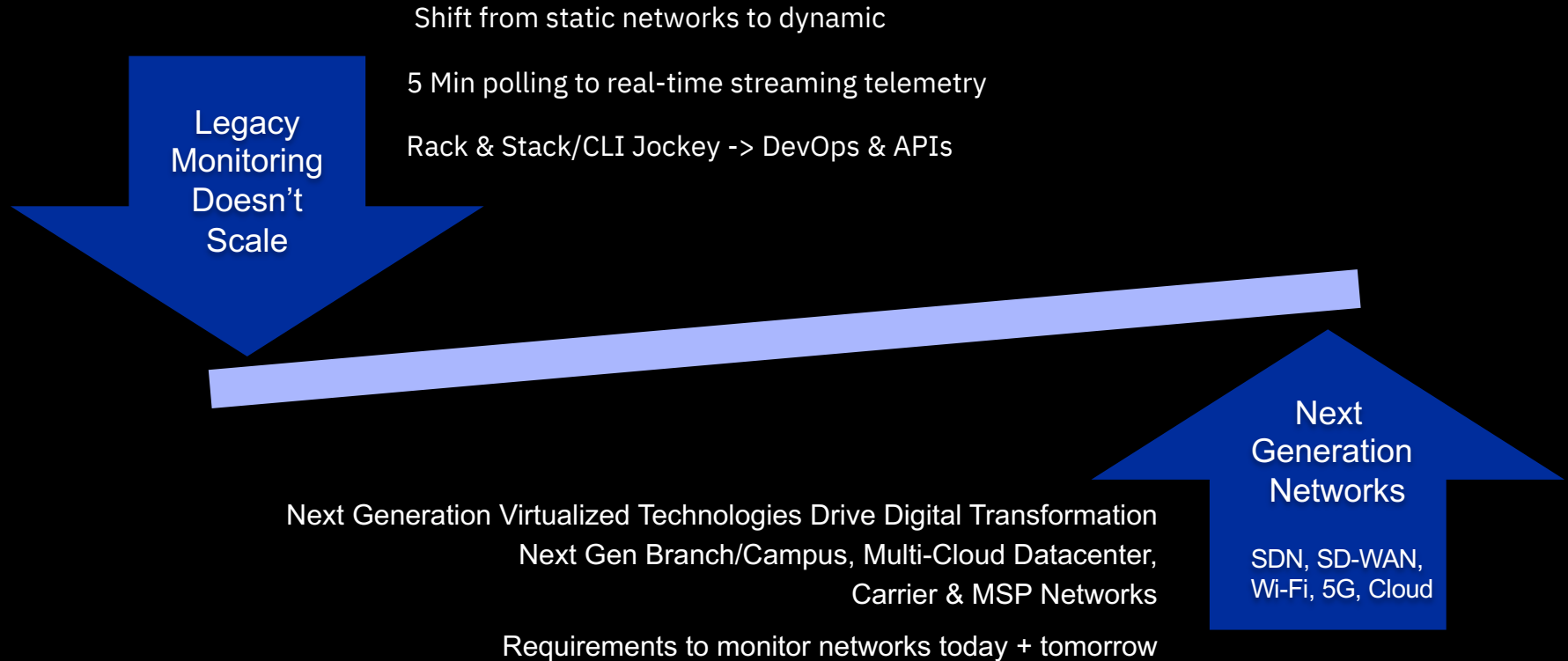
Applications rely on resources to perform.

Network performance is critical to application performance.



Wi-Fi | Campus Routing & Switching | SD-Datacenter | Edge | SD-WAN | Branch/Home | Hybrid Cloud | Service Provider | Managed Service Provider

Continuous Network Performance is Increasingly Challenging



IBM SevOne NPM – *SPEED, SCALE & SIMPLICITY*

SPEED

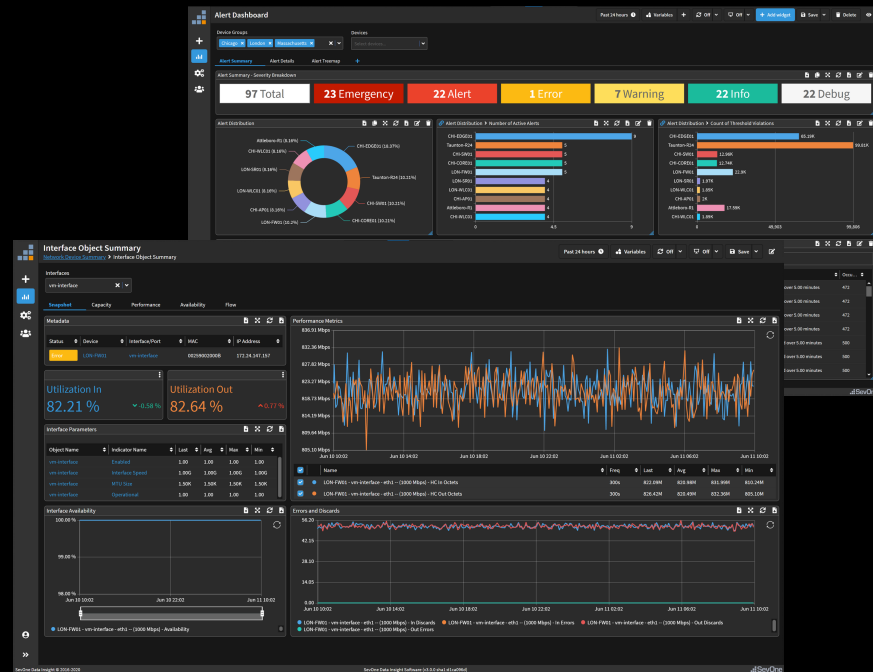
- Polling/collecting of Metrics as fast as 1 second
- Reports and Dashboards, at your fingertips, in 4 - 5 seconds
- Realtime Analytics and Base-lining

SCALE

- Distributed Patented Cluster Technology (Cloud & on Prem)
- Multi-tenant
- RAW data retention of 1 year – No aggregation, No roll-ups !
- Unlimited scalability without compromises to speed or data retention

SIMPLICITY

- Multi-technology Reports, Dashboards & Templates - Out Of The Box
- Embedded Reporting Workflow
- Context sensitive drill-downs and click-thru's
- Fast bi-directional API's (SOAP / Restful / SOA)
 - ✓ Access or Ingest data
 - ✓ Integrate/automate OSS/BSS



What if you could...

Gain Full-Stack
Visibility

Act
Quickly

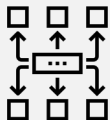


Communicate
Effectively

Automate
Processes

Application-Aware Context

ALL the Network Data



250+ Vendors
Metric + Flow Data

Collect Billions of
Data Points / Day

Support Networks
of Today and Tomorrow

ML-based Advanced Analytics

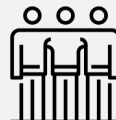


Automatically Know What's
Normal and What's Not

Standard Deviation and
Trend Analysis

Dynamic Capacity Analysis
Flexible Alert Policies

Advanced Visualization/Workflow



Day 1 Dashboards +
Troubleshooting Workflows

Easily Pivot Between
Metrics, Flow and
Splunk/ELK Log Data

Share Visualizations and
Workflows Across Teams

IT Operations Integration

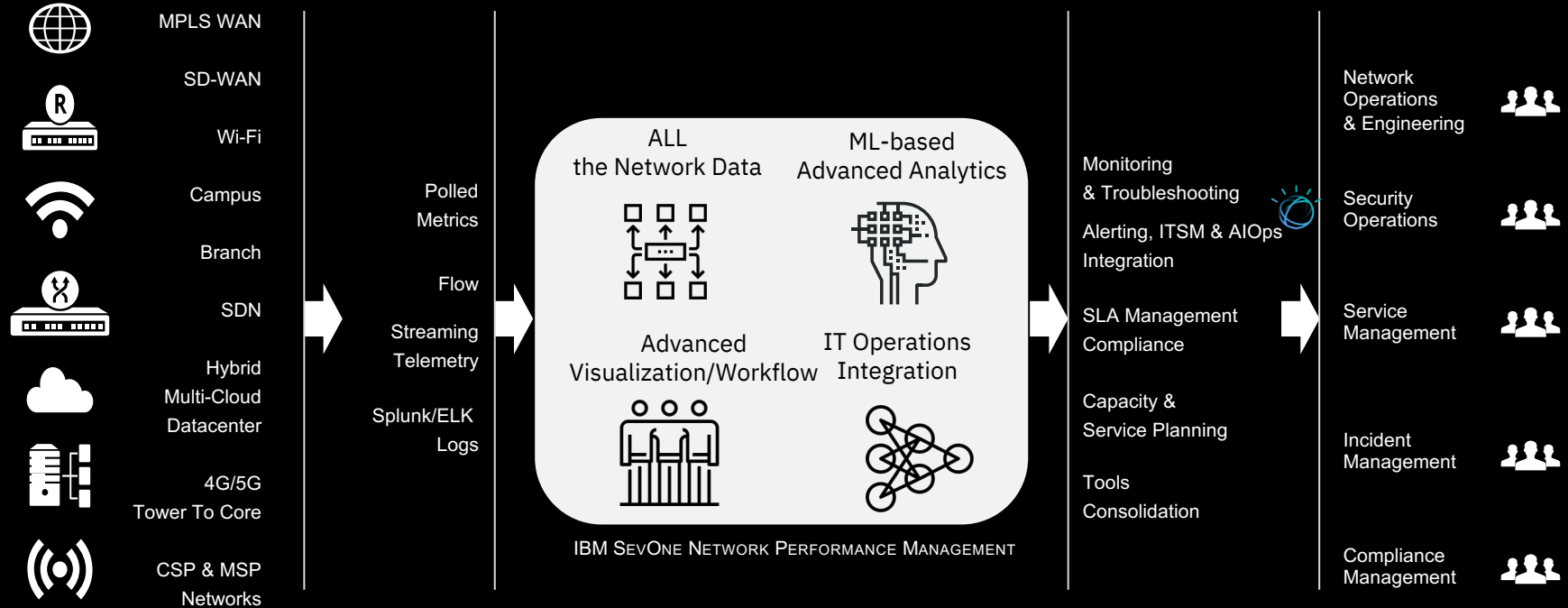


Integrate 3rd Party Data
Sources in Same
Dashboard

Stream Metrics to
Kafka and Pulsar

Webhooks Ready for
IT & AIOps Platforms

IBM SevOne NPM - Application Aware Network Performance Management



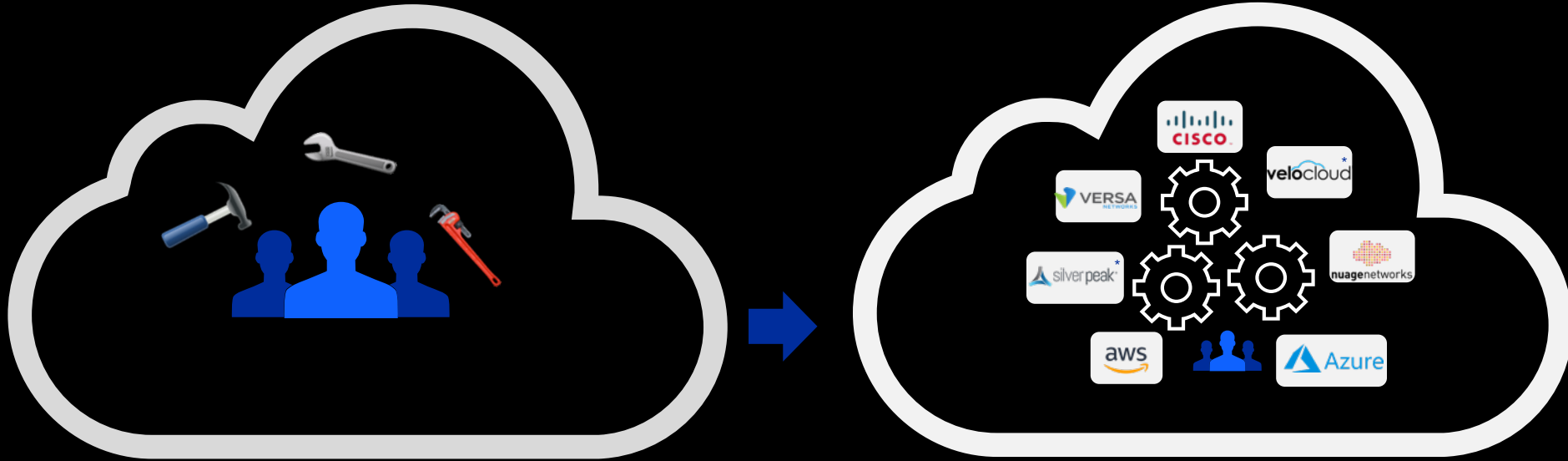
Solutions For Enterprise, MSPs & CSPs

SDN Monitoring | SD-WAN Monitoring | Enterprise Wi-Fi Monitoring | 5G| Streaming Telemetry | Work From Home

250+ Vendors certified – Out of the Box *For Your Network Today*



+ the Networks of Tomorrow – *The Emerging Technologies*



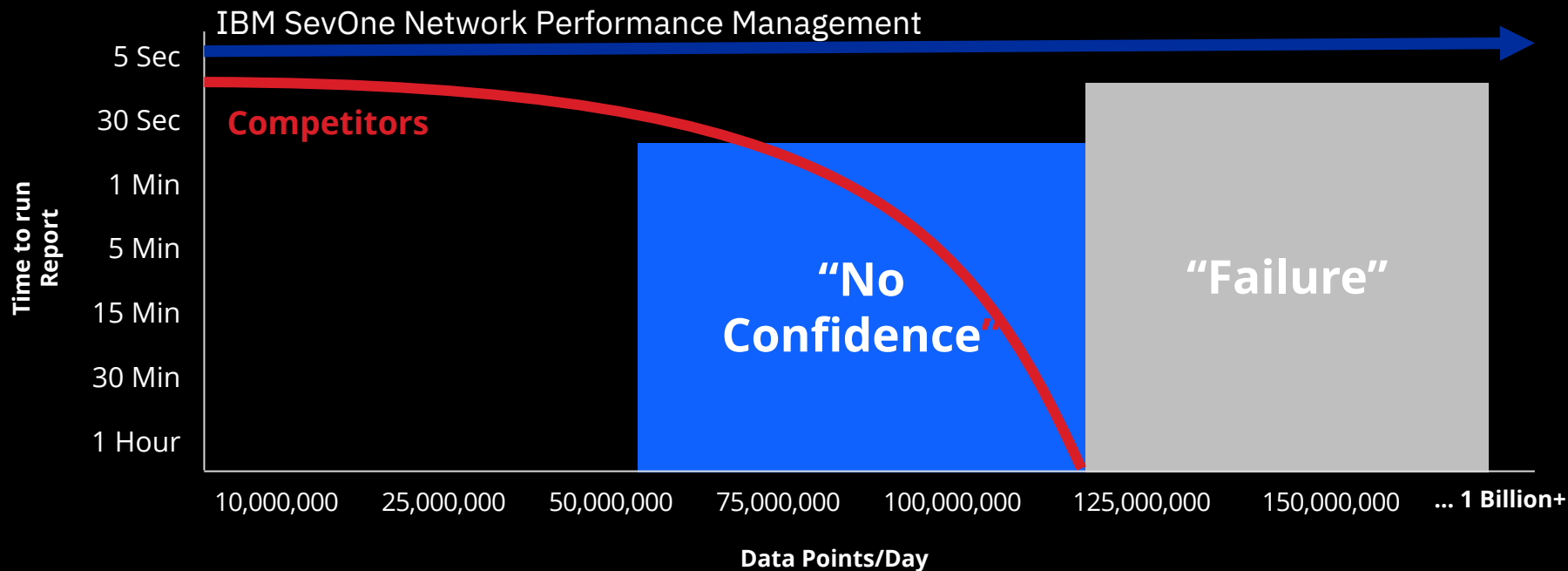
Static

Typically, Manual Processes
Configuring Vendor Specific UI/APIs

Dynamic, On-Demand Infrastructure
Across Datacenter, WAN & Multi-Cloud

Speed at Scale

5 Seconds to Run a Report from 1B+ Data Points a Day



Machine Learning-based Baselines

Machine learning to
help you automatically
know what is **NORMAL**
And
WHAT IS NOT

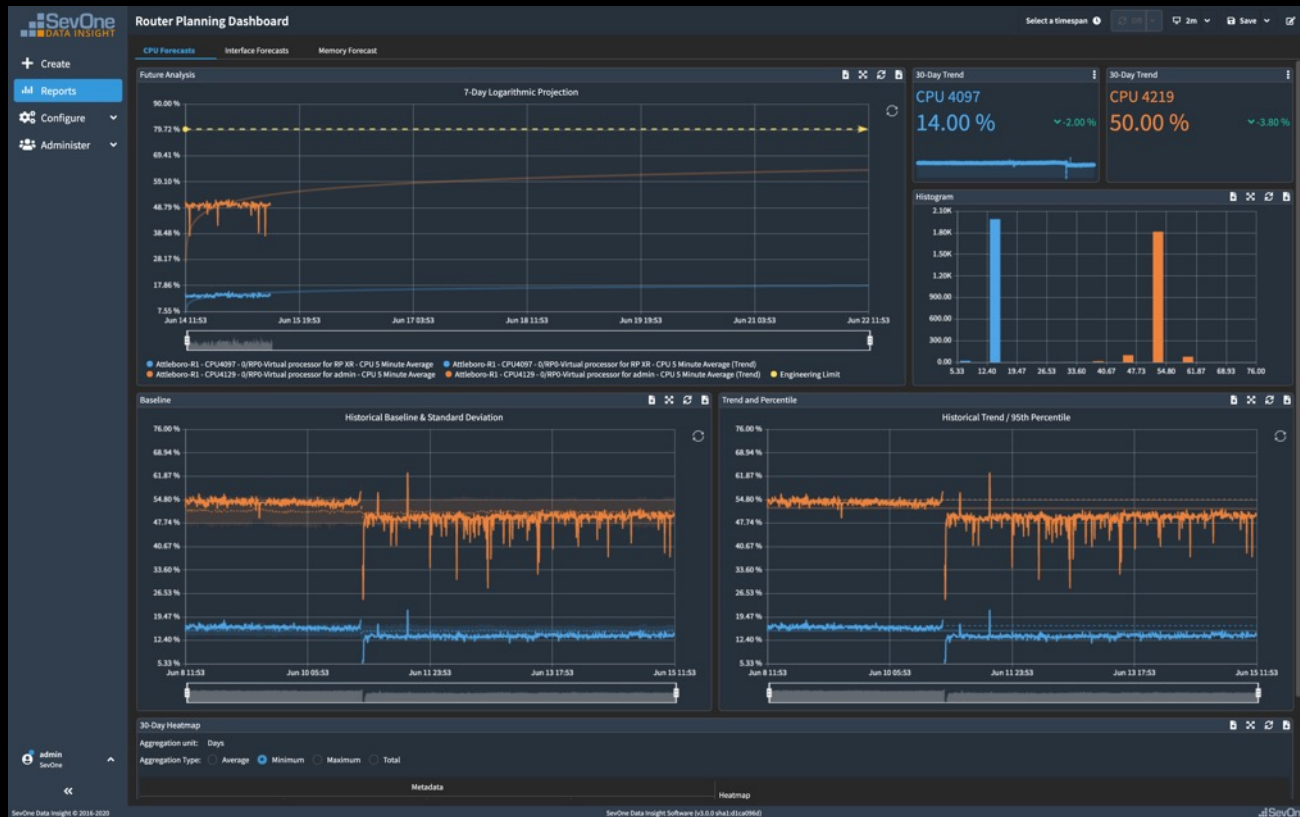
Automatically calculates
baselines
for **EVERY METRIC**
collected



Capacity Planning

Automatically Project
Your **Future Needs**

Leverage your
real-time and
historical data
patterns



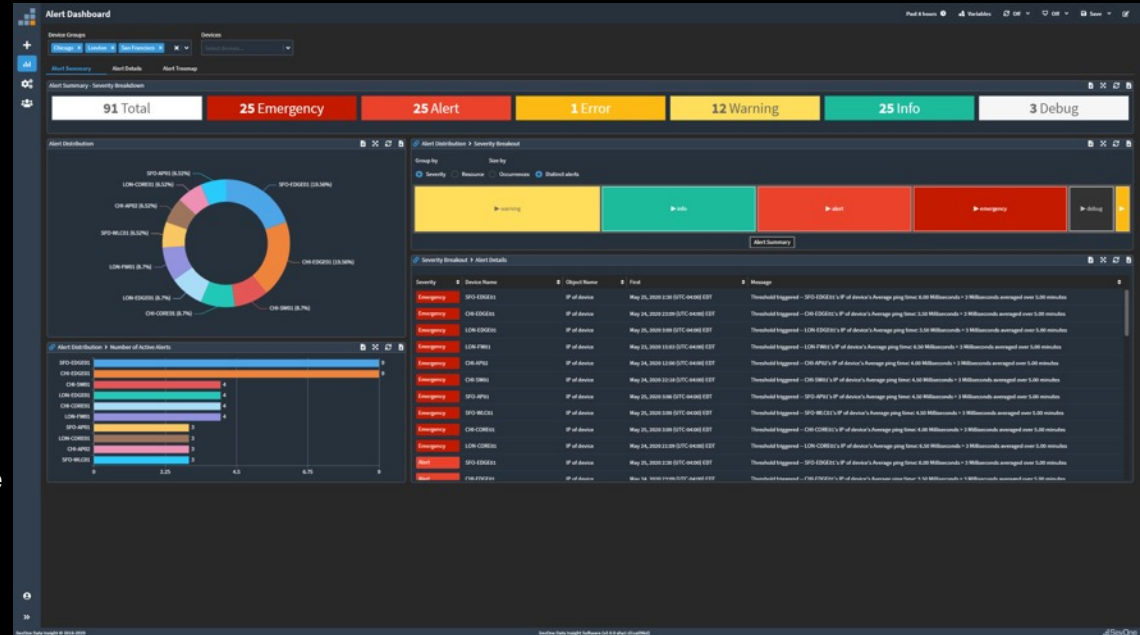
Alert Subscriptions

What Is It & Why Does It Matter?

- Alert Subscriptions allow users to automatically be notified when thresholds are violated. Alert subscriptions are customizable.
- Users can quickly assess device health by severity, and immediately identify the number and duration of outages.

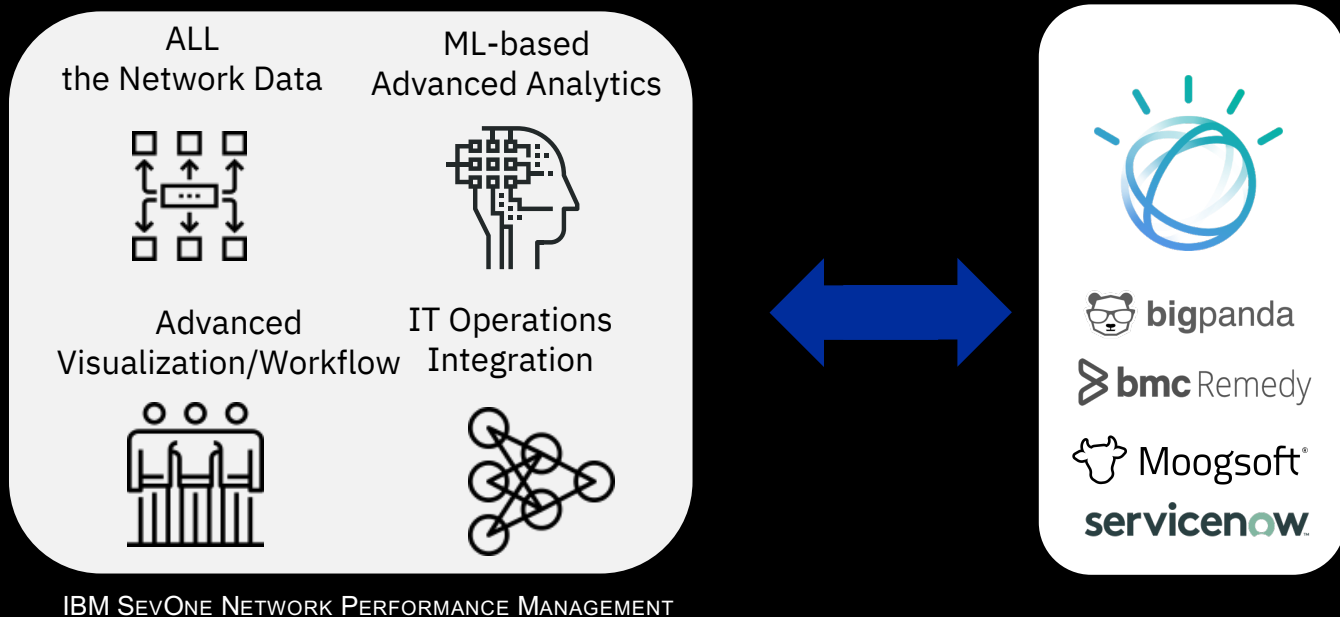
Use Case

- With one click, users have complete visibility into the performance information needed to quickly isolate, assess, and resolve issues before they impact your end-users.



Simple Unification of Data

Leverage Webhooks and APIs for ITSM and AIOps Ecosystem Integration



Extending IBM Cloud Pak for Watson AIOps

For Network Performance Insight at Your Fingertips

IBM Cloud Pak for Watson AIOps

Event Consolidation



Event Deduplication



Event Analytics



Runbook Automation



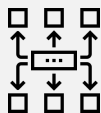
ML-based
events/alerts



In-context drill down of per device/interface
metric and flow-based analytics

IBM SevOne Network Performance Management

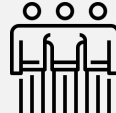
ALL
the Network Data



ML-based
Advanced Analytics



Advanced
Visualization/Workflow



IT Operations
Integration



Polled
Metrics

Flow

Streaming
Telemetry

Splunk/ELK Logs

MPLS WAN

SD-WAN

Wi-Fi

Campus

Branch

SDN

Hybrid Multi-Cloud Datacenter

4G/5G Tower To Core

MSP

Servers

Databases



PROACTIVE INCIDENT MANAGEMENT

Leverage ML to know when network performance is normal, and when it's not

MORE INTELLIGENT NPM ALERTS

Reduce the "noise" going into Watson AIOps

SEAMLESS USER EXPERIENCE













Link in context from Watson AIOps for metric and flow analysis from SevOne NPM

INTEGRATED WORKFLOW

Leverage out of the box workflows to easily troubleshoot and pivot from metric to flow analysis in context

IBM SevOne NPM for your Network Today, Tomorrow and Beyond

Critical Applications Moving to Next Gen Network Infrastructure

					
SD-WAN Monitoring	Enterprise Wi-Fi Monitoring	SDN Monitoring	5G	Streaming Telemetry	Work From Home
					

- Support Multi-Cloud Datacenter, Enterprise Campus/Branch & Carrier Networks
- Multi-Tenant Ready for MSPs
- Support Next-Generation SD-WAN and SDN deployments
- Public Cloud & On-Prem (physical & virtual) Deployment Models

IBM SevOne NPM - Application-Aware Network Performance Management *Drives Positive Business Outcomes*

Industry-critical use cases:

- Proactive troubleshooting
- SLA & compliance reporting
- Capacity management
- New service insight
- Tools consolidation



Assure Application Performance:

- Higher Performance & Availability
- Lower MTTR / MTTI
- Faster service rollout
- Lower TCO (vs existing)
- Improved customer retention

Operationalize performance data across multiple business functions and teams



Mario Robers – IBM SevOne NPM
Senior Systems Engineer

mrobers@sevone.com

+31 6 2992 0727

thank
you