

# IBM Db2 + AWS Better Together

Tuesday, January 24<sup>th</sup>, 2023 | 11 am EST

**Mark Brown**

AWS Senior Partner Solutions Architect on AWS, IBM Strategic Alliance Team

**Michael Kwok, Ph.D.**

Executive Director, Db2, BigSQL, and Data Virtualization Development, IBM Data and AI

**Miran Badzak**

Program Director, Db2 & Databases

# Today's talk

Db2 strategic direction

Why IBM + AWS

Deep dive on offerings

# Welcome



Mark Brown  
AWS Senior Partner Solutions  
Architect on AWS, IBM  
Strategic Alliance Team



Michael Kwok, Ph.D.  
Executive Director, Db2, BigSQL, and  
Data Virtualization Development,  
IBM Data and AI



Miran Badzak  
Program Director, Db2

# Strategic Direction

# 30

Years running the world's  
**mission critical**  
applications and analytics

Governed, secure



Continuously  
available



Effortlessly  
scalable



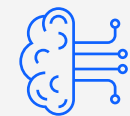
Highly  
performant



Real-time



Automated  
operations



# 10/10

## largest global banks run on Db2



- Running mission critical banking systems to support trillions of financial transactions per day
- Securing your portfolio, reference, market, and risk data from a data breach
- Detecting fraud and money laundering
- Enabling you to manage finances digitally, across any device
- Managing and analyzing trillions of assets globally

# Largest

## Fortune 10 retailer runs on Db2



- Powering inventory and supply chain visibility across tens of thousands of stores
- Ingesting and analyzing petabytes of unstructured data from millions of customers every hour
- Personalizing omni-channel experiences for hundreds of millions of customers
- Securing customer payments globally

# 9/10

## largest global auto manufacturing companies



- Enabling a data management foundation to support connected cars and autonomous vehicles
- Optimizing inventory and supply chain operations with real-time insights and high availability of applications
- Predicting maintenance and tuning to keep operations running safely



# And we are invested in supporting the future needs of our customers

11K+

customers globally

76

of Fortune 100<sub>1</sub>  
companies run on Db2

100T+

Transactions per day

1 Based on [Fortune's Top 100 Companies of 2022](#)



An aerial photograph of a large-scale solar power plant. In the center, a solar tower (receiver) is surrounded by two large circular mirrors (heliostats). The entire area is covered by a vast field of smaller heliostats, which are arranged in a grid-like pattern. The heliostats are white and reflect sunlight, creating a shimmering effect. The surrounding landscape is arid and brown.

**30 years of  
innovation.**

That's in our  
DNA.



# Db2 cloud-first strategy

---

Organizationally aligned under single leadership structure fully dedicated to cloud first.

Deploy fully managed services to IBM Cloud as the primary cloud of choice with self-managed reference architectures for others.

All new Db2 releases coming to cloud first, to be followed by the traditional software release. Innovation on cloud available for self-managed deployments as well.

Engaging partnership opportunities to accelerate the delivery of fully managed DBaaS to hyperscalers.

# Partnership



# Leading software and public cloud **coming together**



Leading provider of  
enterprise software



Leading public cloud  
provider

**Jointly engineered solutions deliver the best of IBM and AWS**  
for customers migrating IBM software workloads to AWS

### Executive Commitment

from both IBM and AWS cementing our focus helping clients transform in the hybrid cloud environment today and in the future.

### Joint Client Projects

IBM and AWS work together, coordinating to deliver clients valuable outcomes.

### Inorganic Growth

Acquisitions of Taos and Nordcloud, cloud-native service providers that bring more value & expertise to customers

### New AWS Business Units!

- IBM Consulting created an AWS business unit to meet clients on the cloud platform of their choice.
- IBM Software relationship was established with AWS to offer customers flexibility.

### Certifications

Reached 10K+ AWS certifications, 13 competencies, 16 Service delivery programs within IBM Consulting and IBM Software.

### New Offerings

IBM and AWS are actively partnering to deliver new industry offerings with IBM Consulting and IBM Software to enable superior customer outcomes. To date, IBM has launched 50+ Software offerings on AWS & we're just getting started!

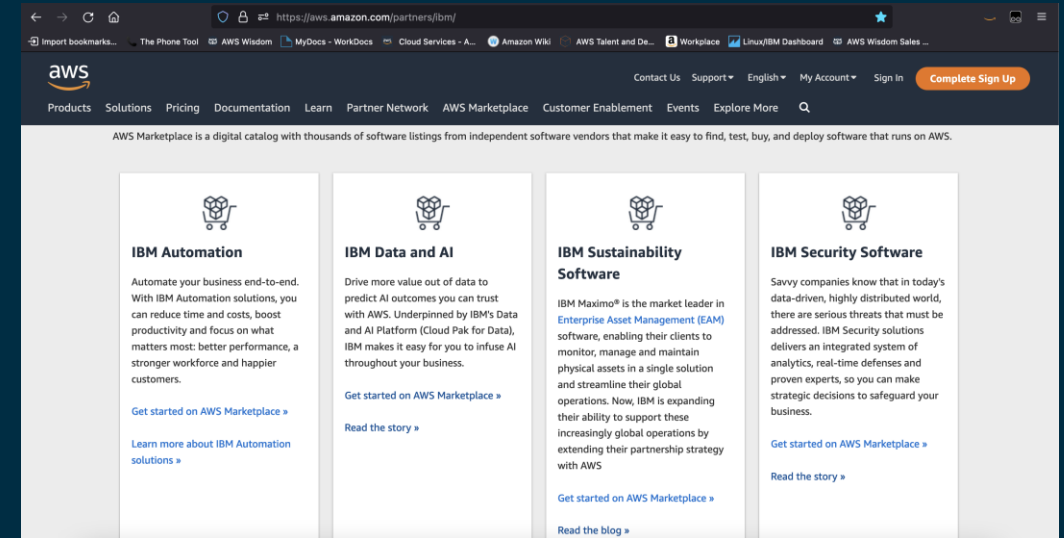
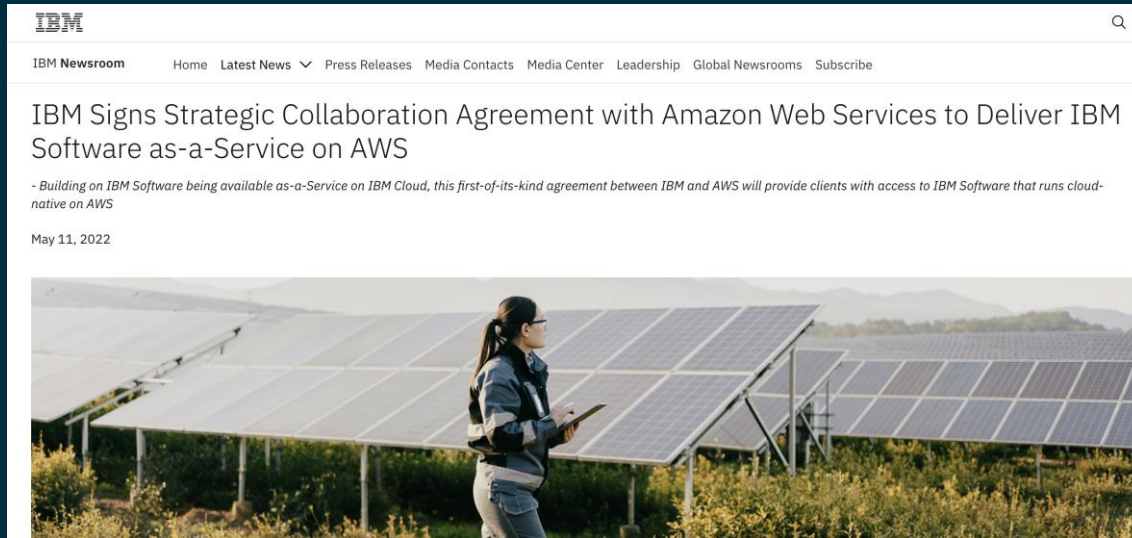
2019

2020

2021

2022 - beyond

# Taking the partnership to the next level



IBM is bringing a broad array of its software catalog as Software-as-a-Service (SaaS) on AWS

# IBM on **AWS** Software plays



---

Data & AI



---

Security



---

Automation



---

Sustainability



# Modernization

# Cloud transformation is accelerating

57%

of customers are looking to migrate more workloads to the cloud\*



59%

of customers want to optimize existing use of cloud (cost savings)\*



55%

Faster time to market for mature cloud adopters vs. on-premises\*\*

\*Source: Flexera 2022 State of the Cloud Report

\*\*Source: McKinsey Quarterly 2021

# Workload migration and modernization results

31%

Average infrastructure  
cost savings

43%

Fewer security  
incidents per year

62%

IT staff  
productivity boost

3x

More features delivered  
per year

Sources: IDC, Nucleus Research, AWS Analysis

# Benefits of modernizing and migrating to AWS



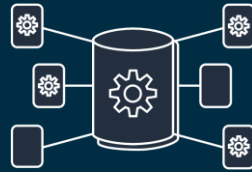
---

**Migrate** to  
free up resources



---

**Transform**  
licensing and  
cost models to  
the cloud



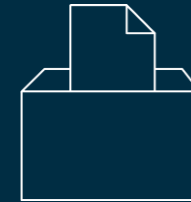
---

**Scale & secure**  
infrastructure on  
demand



---

**Leverage your**  
**data** with  
advanced  
analytics



---

**Innovate** with  
200+ cloud-  
native services



---

Boost **skills and**  
**experience** for  
speed and  
agility

# Cloud Migrations creates business value



## Cost savings (TCO)

### What is it?

Infrastructure cost savings/avoidance from moving to the cloud

### Examples

50%+ reduction in TCO (GE)



## Staff productivity

Efficiency improvement by function on a task-by-task basis

Over 500 hours per year of server configuration time saved (**Sage**)



## Operational resilience

Benefit of improving SLAs and reducing unplanned outages

Critical workloads run in multiple AZs and regions for robust DR (**Expedia**)



## Business agility

Deploying new features/applications faster and reducing errors

Buildouts and deployments happen 5x faster (**Intuit**)

Typical focus

Most compelling cloud benefits  
Business/value

# Offerings

# Db2 properties on AWS

## IBM Db2 on AWS

	AWS IaaS	AWS Marketplace	AWS EKS or ROSA	AWS SaaS
<b>Db2</b>	✓	✓	✓	
<b>Db2</b> pureScale	✓	✓		
<b>Db2</b> Warehouse			✓	✓
	<< Self-Managed		Cloud-Managed >>	

## Db2 database for highly-available deployments:

- Option to run directly on EC2 and EBS IaaS, purchase or deploy through the AWS Marketplace, or deploy the Db2 universal (Db2u) container on fully managed AWS Kubernetes (EKS) or OpenShift (ROSA) services

## Db2 pureScale for continuous availability:

- Option to run directly on EC2 and EBS IaaS, or deploy through the AWS Marketplace listing with CloudFormation template, bringing deployment times from days to minutes

## Db2 Warehouse for high-performance analytics:

- Option to deploy quickly our fully managed cloud data warehouse or through the Db2u container on ROSA or EKS for self-managed deployments

Db2U

## **Enhancing Cloud Native Experience**



# Db2 Universal Container – Db2U

Db2 Universal Container, a.k.a Db2U, is a containerized micro-service'd Db2 offering for embracing cloud-native modernization.

## Operational Management

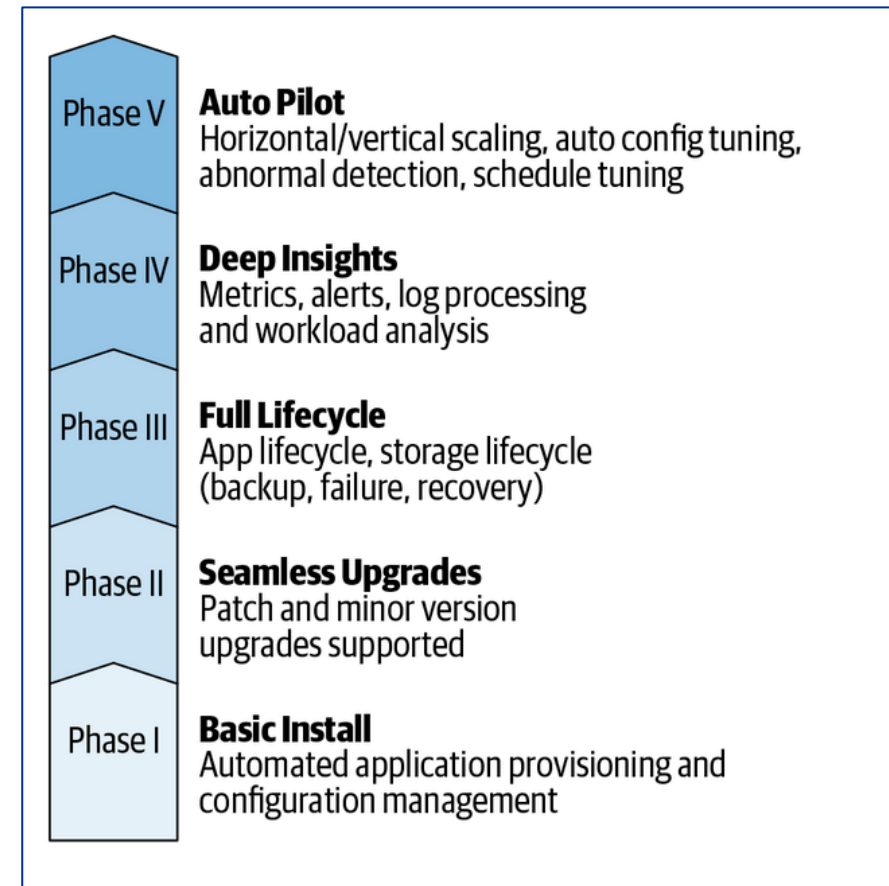
- Package, Configure, Deploy & Manage
- Deployment
- Management

Measured for completeness by a maturity model

- Currently expanding Phase III and IV capabilities.

## Delivery

- IBM Operator Catalog
  - Supports Air Gap
- Red Hat Marketplace



# Db2U – Public Cloud Support

## Amazon Web Services

- Red Hat OpenShift Service on AWS (ROSA)
- Elastic Kubernetes Service (EKS)

## Microsoft Azure

- Azure Red Hat OpenShift (ARO)
- Azure Kubernetes Service (AKS)

## Google (Coming in 2023)

- Google Kubernetes Engine (GKE)

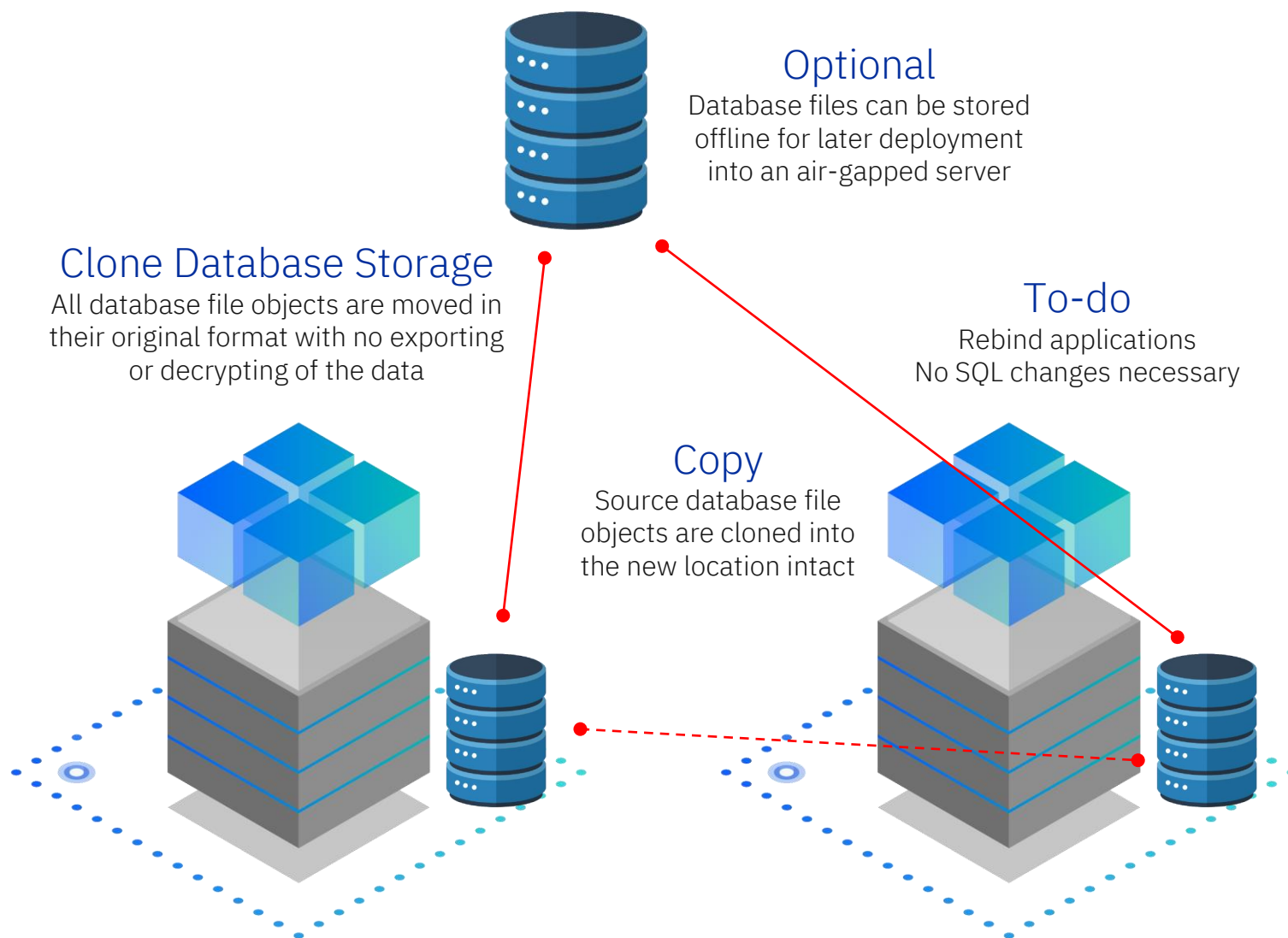
Reference Architecture Document for AWS: <https://www.ibm.com/docs/en/db2/11.5?topic=aws-planning-your-configuration>

# Db2 Click to Containerize

The fastest way to move your data from a traditional on-premise Db2 Linux X64 system to a Cloud Environment

- Move to Db2U on OpenShift, Kubernetes, or Cloud Pak for Data
- Containerize your data or move to a traditional server instance
- Command line or UI tool for flexibility
- With automatic database upgrades
  - V10.5, v11.1, V11.5+

More info: [ibm.biz/c2cguide](https://ibm.biz/c2cguide)





Db2 pureScale on AWS

**Bringing the pureScale technology to AWS with  
deployment time under 60 minutes**

# Db2 pureScale on AWS Marketplace

The screenshot displays the AWS Marketplace interface for the IBM Db2 pureScale product. The top navigation bar includes links for About, Categories, Delivery Methods, Solutions, AWS IQ, Resources, and Your Saved List. The main content area shows the IBM Db2 product page with a 'Launch instances' button. A 'Parameters' panel on the left allows configuration of the deployment, including Host Configuration (Small, Medium, Large, XLarge), Instance Name (db2inst1), and AMI ID (ami-06d271db2f71f9f4). The right panel shows the EC2 console 'Instances (1/17)' table, listing several instances. One instance, 'pS-AWS-demo-1', is highlighted as 'Running' with a status check of '2/2 checks passed'.

Name	Instance ID	Instance state	Instance type	Status check	Alarm status	Availability Zone
pS-AWS-demo-2	i-06a37b7db2d0bb6f1	Terminated	c6i.xlarge	-	No alarms	us-east-2a
pS-AWS-demo-3	i-0088daecd9bc13eda	Terminated	c6i.xlarge	-	No alarms	us-east-2a
pS-AWS-demo-4	i-0e525a86b81dc0879	Running	c6i.xlarge	2/2 checks passed	No alarms	us-east-2a
pS-AWS-demo-1	i-017abb4e4c6b5b43d	Running	c6i.xlarge	2/2 checks passed	No alarms	us-east-2a
KT-Test	i-0df626c13bbc7a6e9	Running	c6i.xlarge	2/2 checks passed	No alarms	us-east-2a
psLargePerf-4	i-0f011c5b68ca5e596	Stopped	c6i.16xlarge	-	No alarms	us-east-2a
psLargePerf-2	i-0b429cf0bbc5f84f0	Stopped	c6i.16xlarge	-	No alarms	us-east-2a

**Push-button deployment of self-managed pureScale on AWS through the Marketplace. Choose the region, t-shirt size configuration and get going.**

**Product Page:** <https://aws.amazon.com/marketplace/pp/prodview-fyclwzxhlopby>

**Documentation:** <https://www.ibm.com/docs/en/db2/11.5?topic=providers-db2-purescale-aws>

IBM Db2

# Db2 pureScale on AWS Marketplace

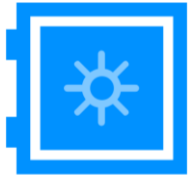


Db2 Warehouse

## **New Architecture and Native Cloud Object Storage**



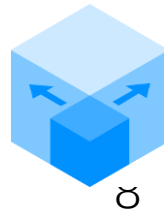
# Db2 Warehouse (SaaS)



Fully managed / SaaS  
Focus on the analytics,  
we'll take care of the  
rest



Blazing-fast  
Columnar-organized,  
memory-optimized  
data warehouse



Scalable & elastic  
Avoid billing surprises  
and take control of  
your storage and  
compute in the cloud



Continuously available  
Managed compute,  
highly available storage,  
cross-cloud replication



Reliable  
Double protection with  
disaster recovery & self-  
service backup/restore

Deploy as fully-managed DBaaS on **IBM Cloud** and **Amazon Web Services**

## IBM Db2 Warehouse

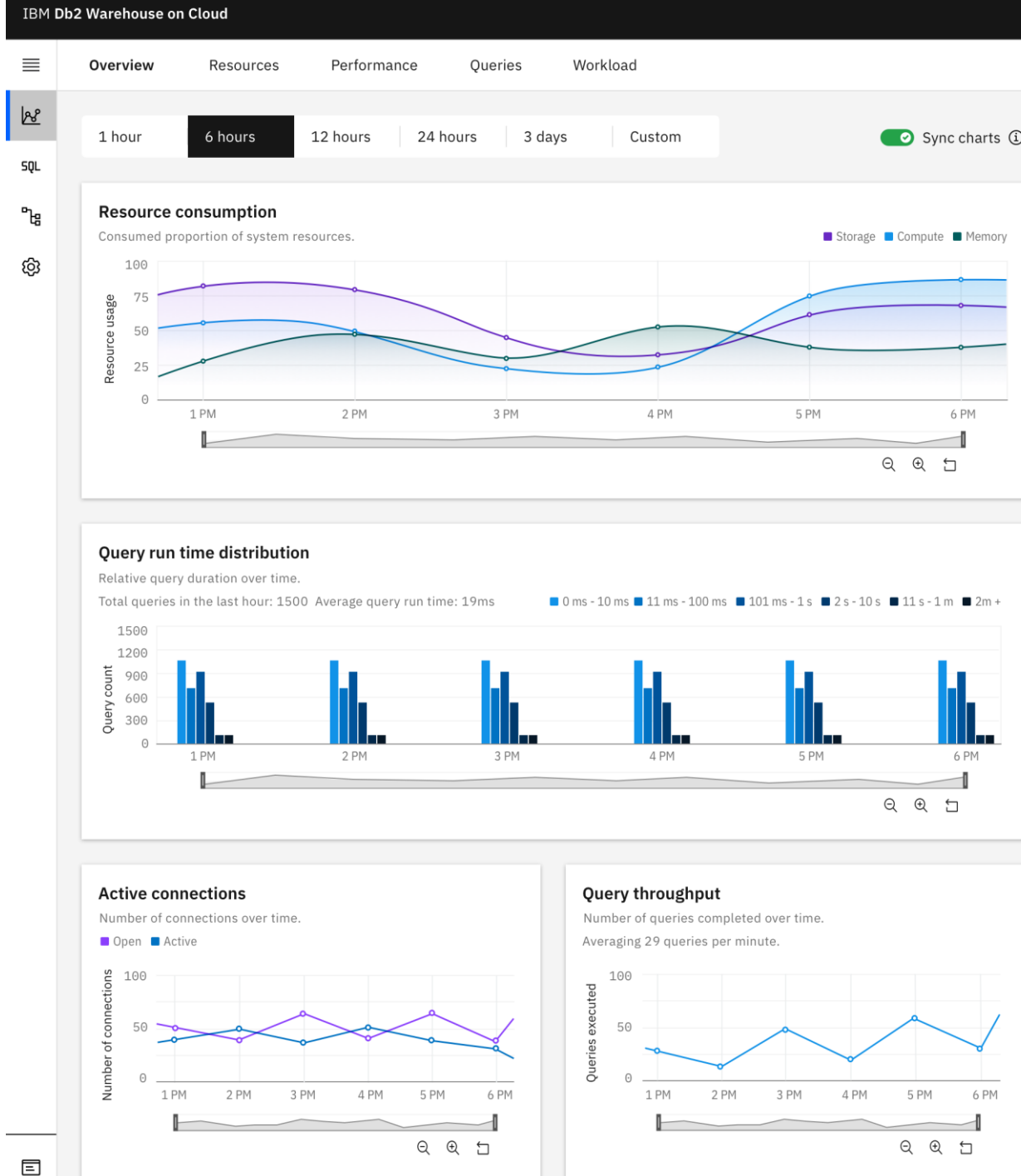
### Introducing the third generation of our cloud data warehouse

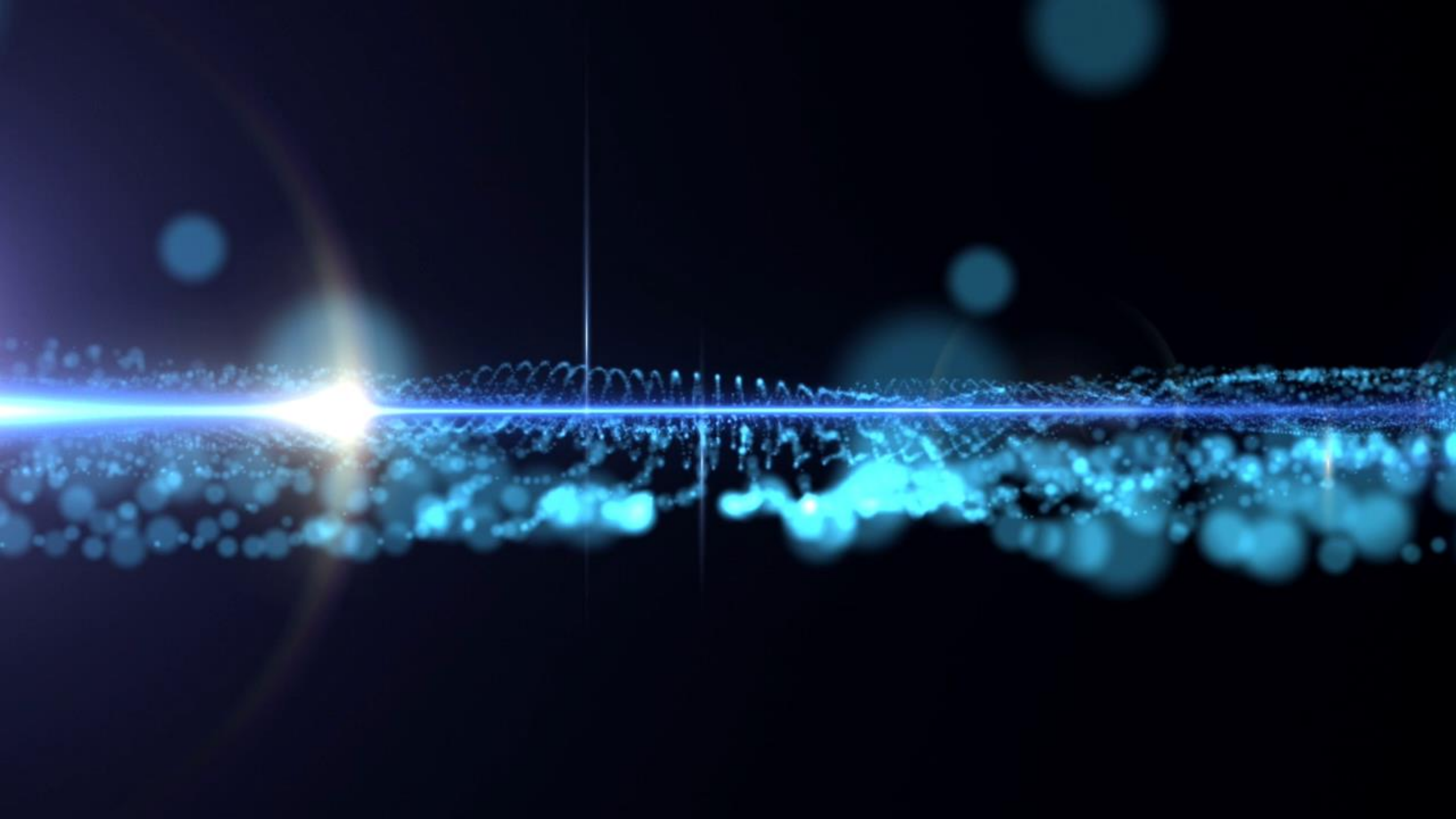
#### Key new features:

- Amazon S3 support for table storage, significantly decreasing the cost of storing data without sacrificing performance
- Query multiple open data formats (Iceberg, Parquet, AVRO, ORC, CSV, JSON and more) leveraging existing compute resources dedicated to the warehouse

#### Other features:

- Fully managed cloud data warehouse scaling up to 1440 cores (2880 vCPUs) per cluster, multi-petabyte-scale, multi-performant storage with seamless transition between compute tiers
- Tiered storage support for Amazon S3 and Block Storage
- Storage auto-increase for Block Storage on set threshold ensuring you never run out of storage for your workloads
- Cross-region snapshot backup to AWS S3 for disaster recovery
- Self-service maintenance windows for product and database engine updates
- New APIs for scaling, updates, backup/restore, logging
- Granular, schema-level backup/restore to S3, restoring only the data you need





## IBM Db2 Warehouse

Preliminary performance numbers comparing  
Db2 Warehouse Block vs Object Storage

# 2.6x

**Faster SELECT  
performance**

**Warm local NVMe cache,  
test with BDI Serial (5TB)**

- Db2W Block Storage:  
**2289.79s**
- Db2W Object Storage:  
**897.08s**

# 2.8x

**Faster INSERT  
performance**

**Insertion of 14.5B rows  
into the warehouse**

- Db2W Block Storage:  
**984.556s**
- Db2W Object Storage:  
**384.674s**

# 7.2x

**Faster UPDATE  
performance**

**Update 10% of 14.5B rows  
at random**

- Db2W Block Storage:  
**850.919s**
- Db2W Object Storage:  
**118.342s**

# 41x

**Lower cost for  
object vs block  
storage**

**\$23/TB/mo vs \$935/TB/mo**

Comparing Flex  
Performance \$/TB today vs  
Amazon S3 \$/TB

# Take your next step toward a [data-driven innovation](#).

## Get Started with IBM Db2 on AWS today



IBM Db2 + AWS  
Knowledge Center



[Visit the website](#)



Contact an IBM Db2 Expert  
today



[Book a meeting](#)

Checkout IBM Db2 on AWS Marketplace:

[IBM Db2 on AWS Marketplace Page](#)



[IBM Db2 pureScale on AWS  
Marketplace](#)



Learn more about IBM Db2

[Checkout the IBM Db2 Website](#)



