

Get started with IBM Integration Bus for Developers

Ian_Larner

Published on May 8, 2015 / Updated on May 28, 2019

Start using IBM Integration Bus for Developers (also known as Developer Edition) without charge: download and then install the software, and then create and deploy your first integration solution, all in 3 steps, in minutes.

IBM Integration Bus for Developers contains everything you need to quickly get started developing your own integration solutions. You can use it without charge in all development and unit test scenarios, and differs from the full product only in that it is limited to processing one transaction per second.

The download package is updated from time to time, so package-specific values for the current package may be different to those shown in this page (for example, in example screens, menu titles, and folder names). For example, this page was last validated with the 10.0.0.2-IIB-WIN64-DEVELOPER package, for which the default install path was
C:\Program Files\IBM\IIB\10.0.0.2.

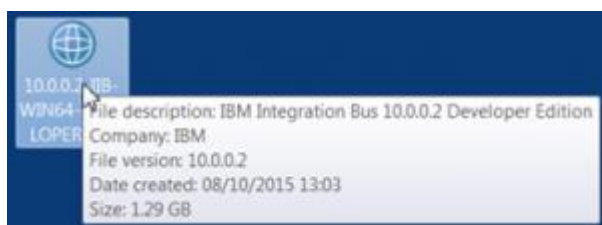
Step 1: Download IBM Integration Bus for Developers

Download the IBM Integration Bus for Developers to your computer so that you can explore the product, learn from tutorials, and develop your own integration solutions and skills.

Downloading is straightforward, and only needs you to choose Linux or Windows as your target platform, provide some details about your interest, and agree to the license.

To download now, click [Download](#)

Result: The software is on your computer, and you are ready to install IBM Integration Bus for Developers



Step 2: Install IBM Integration Bus

Installing IBM Integration Bus for Developers Version 10 is little more than to unpack the software, which sets up the Integration Toolkit and creates a runtime test environment in a few minutes.

On Windows, run the install file that you downloaded. As an option, you can choose your preferred directory to install to or just use the default: C:\Program Files\IBM\IIB\10.0.0.x

(On Linux, just unpack the file to a directory of your choice.)

[Read a description of installing on Windows](#)

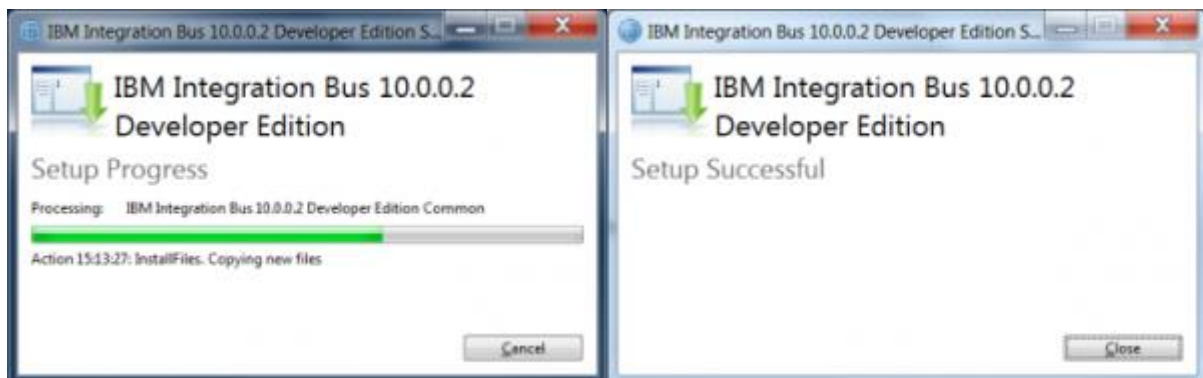
On Windows, run the install file that you downloaded to start a standard Windows installer.



1. Read the license, and then click the checkbox to agree to the terms.

By default IBM Integration Bus is installed in C:\Program Files\IBM\IIB\10.0.0.x. (If you want to change the installation directory, click Options and type or navigate to the directory path that you want to use.)

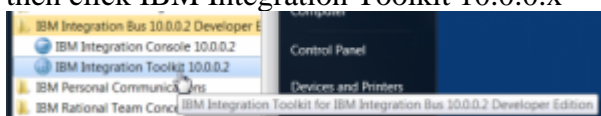
2. To install the software, click Install.
3. The installation takes up to several minutes



4. When the installation has finished, click **Close**.

As a simple completion test, start and briefly explore the Integration Toolkit.

1. From the Start menu, expand IBM Integration Bus 10.0.0.x Developer Edition, and then click IBM Integration Toolkit 10.0.0.x

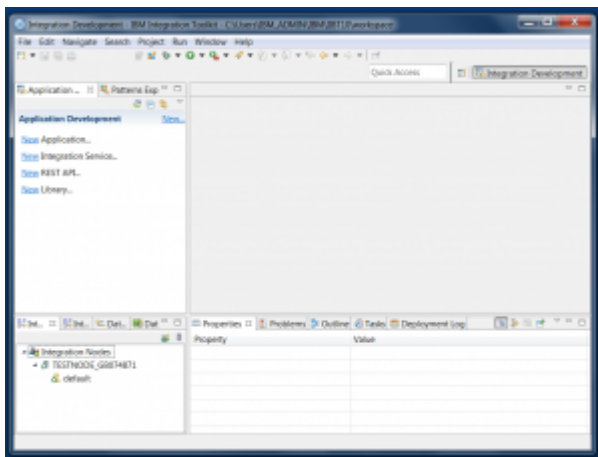


The Integration Toolkit opens to display its welcome page.



This offers a Get Started access to the Tutorials Gallery, and links to see what's new or install language packs.

2. For now, to display the Integration Toolkit, close the Welcome page or click 'Go to the Integration Toolkit'.
(At any time, you can return to the welcome page by clicking the menu choice Help > Welcome page.)



Note (bottom left) the preconfigured integration node and default integration server that form the runtime test environment. The icons indicate that the node and server are started.

You've successfully installed IBM Integration Bus, and have the Toolkit ready to create and test integration solutions.

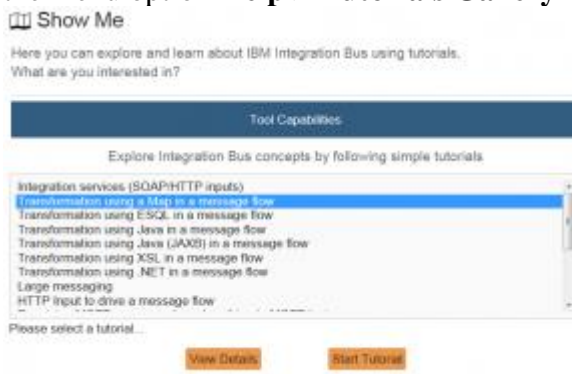
Result: IBM Integration Bus for Developers is installed on your computer, and you are ready to develop, deploy and test integration solutions

Step 3: Explore and test an integration solution

To quickly get started with IBM Integration Bus in a practical way, you can use the tutorials in the Integration Toolkit. (This is the same on Windows and Linux). The Integration Toolkit retrieves the available tutorials through connection to a GitHub repository.

[Read a description of exploring and testing an integration solution](#)

1. Start the Integration Toolkit, and then display the Tutorials Gallery; for example, from the menu option **Help > Tutorials Gallery**



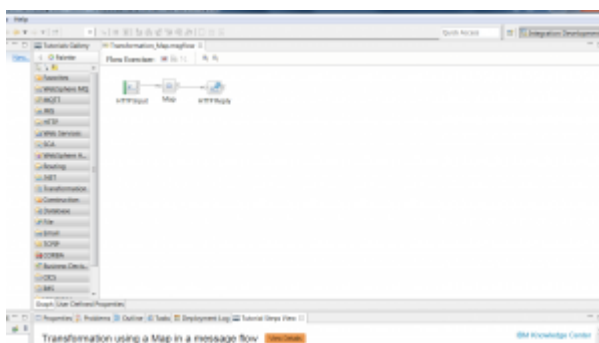
2. For this get started example, select the tutorial “Transformation using a Map in a message flow”, and then click **Start Tutorial**.



This simple example shows you how to use a Mapping node to transform data using a Map in an IBM Integration Bus message flow.

3. Optional: If you want to read more about the tutorial, click Show Details.
4. First, to add the Transformation_Map application into your workspace, click Import on the Create tab.

The Transformation_Map message flow is opened for you.

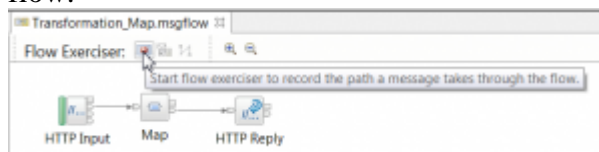


For this example, no other preparation steps are required.

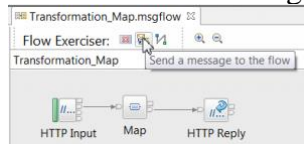
5. Next, click the Run tab.

Follow the steps shown on the Run tab to use the Flow exerciser to send HTTP requests to the message flow. That is, in the Transformation_Map message flow:

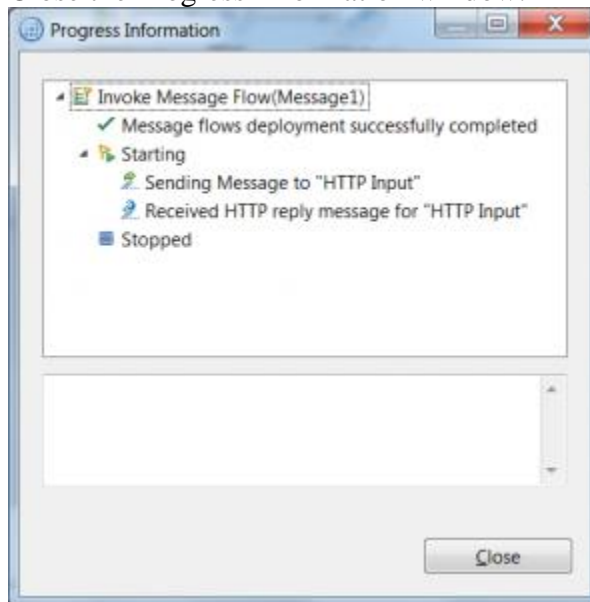
- a. Click the Flow Exerciser icon to start recording the message path through the flow.



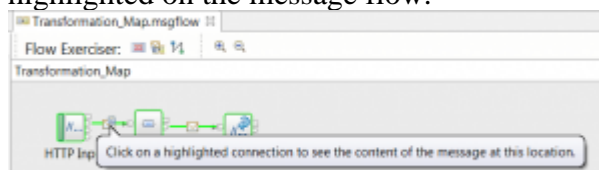
- b. Click the Send Message icon to select a message to send to the flow.



- c. Choose Message1, edit the message data if you like, and click Send. Your request message is sent to the HTTP Input node.
- d. Close the Progress Information window.

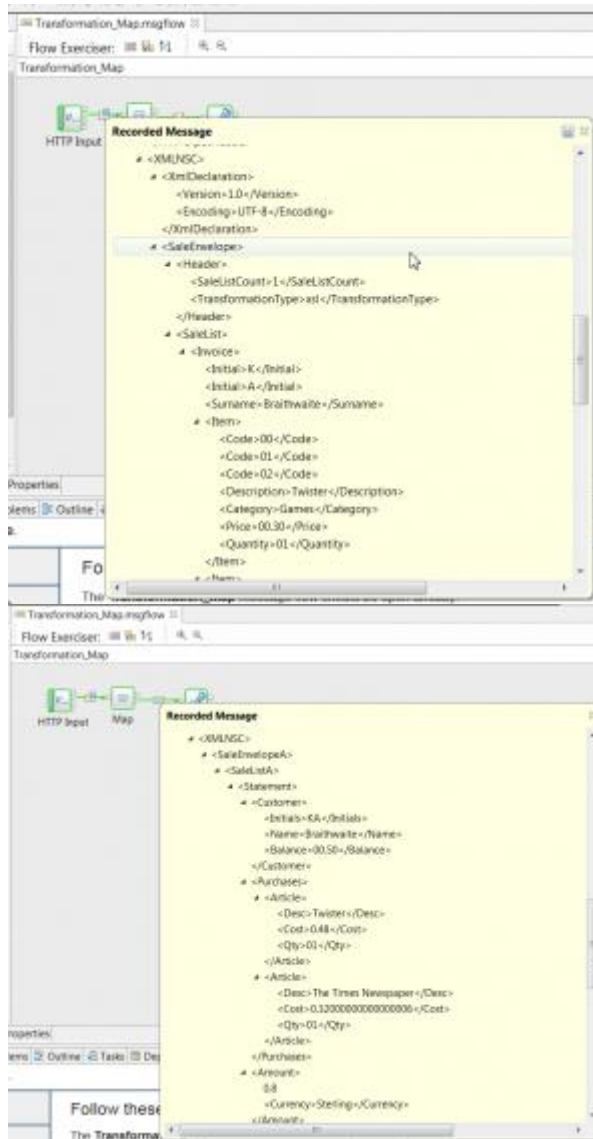


- e. After the request message is processed, the message path is automatically highlighted on the message flow.

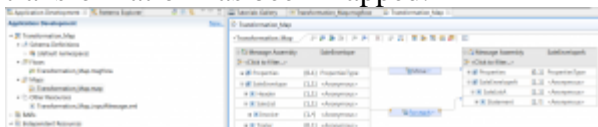


- f. Click on any connection to see the data that passed through that connection.

You can see that the request (input) message data has been transformed into a different response XML message.



6. If you open the Transformation_Map.map, you can see how the message data transformation has been mapped.



You've successfully explored and tested an integration solution.

Result: You have configured, deployed, and tested your first integration solution.

What next?

Explore other tutorials in the Tutorials Gallery of the Integration Toolkit, as outlined in the article [Tutorials](#).

Explore the [Self-study labs](#).

[Read @mqmatt's blog "IBM Integration Bus: Get Started in Ten Minutes"](#) which uses the 'Integration Services (SOAP/HTTP inputs)' tutorial to demonstrate how you can use IBM Integration Bus to expose a simple web service that converts temperature readings between celsius and fahrenheit.

[Read the article "Get started developing an integration solution"](#) which provides an overview of the end-to-end steps and considerations for developing an integration solution.

Want to get started using WebSphere MQ with IBM Integration Bus v10? See [Installing WebSphere MQ for use with IBM Integration Bus for Developers](#)

Choose from a list of [resources and articles tagged as get-started](#)

Learn more:

- [Download IBM Integration Bus for Developers](#)
- [Installing WebSphere MQ for use with IBM Integration Bus for Developers](#)