



2020 Mid-Year Airport Maximo User's Group (AMUG) Agenda

KC Test Drives EAM (Maximo) & BIM Integration in New Maintenance Facility



- March 3 2020 | 02:45pm– 03:30pm



Presenter :
Ian A. Redhead
Deputy Director
Kansas City Missouri Aviation Department

**2020 Mid-Year Airport Maximo
User's Group (AMUG) Agenda**



Kansas City Aviation Department

- The Kansas City Aviation Department owns and operates Kansas City International Airport and Charles B. Wheeler Downtown Airport.
- The MCI complex spans more than 10,000 acres, and its three runways can accommodate up to 139 aircraft operations per hour. Handled approx. 12M passengers in 2019
- Dedicated by Charles Lindbergh in 1927, Charles B. Wheeler Downtown Airport is the city's first airport. Located on 695 acres, the airport now attracts many corporate, charter and recreational flyers.



Proposed design and location of new terminal



**2020 Mid-Year Airport Maximo
User's Group (AMUG) Agenda**



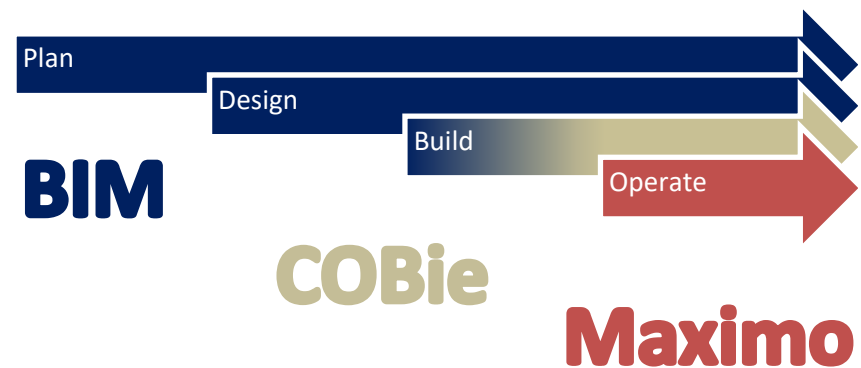
New Single Terminal Building and Parking



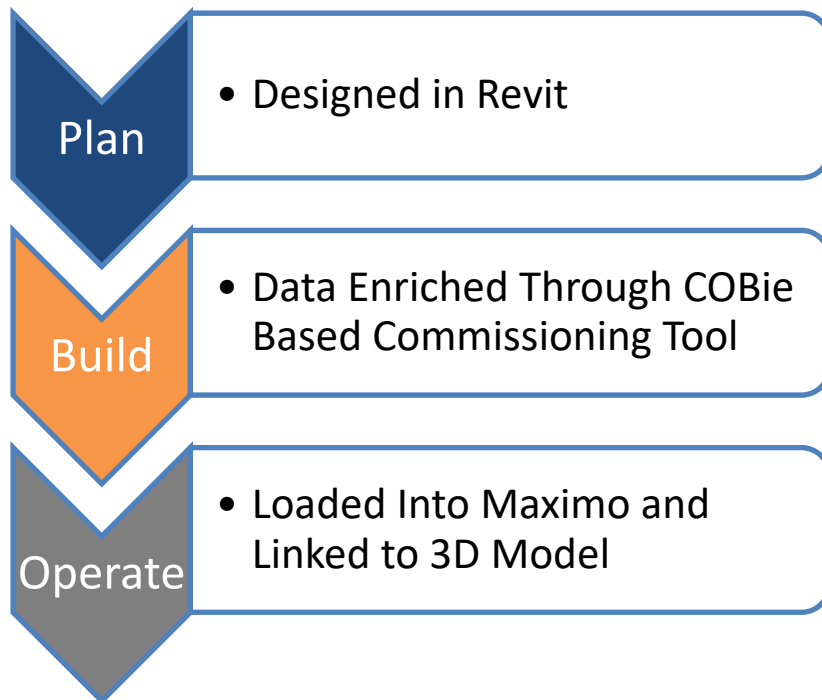
- 39 gate Terminal replaces existing terminals A, B and C.
- The total estimated building area for the Terminal is 1,094,000 sf.
- A 6,300 space six-level garage
- The KCI Terminal will achieve LEED Gold certification.

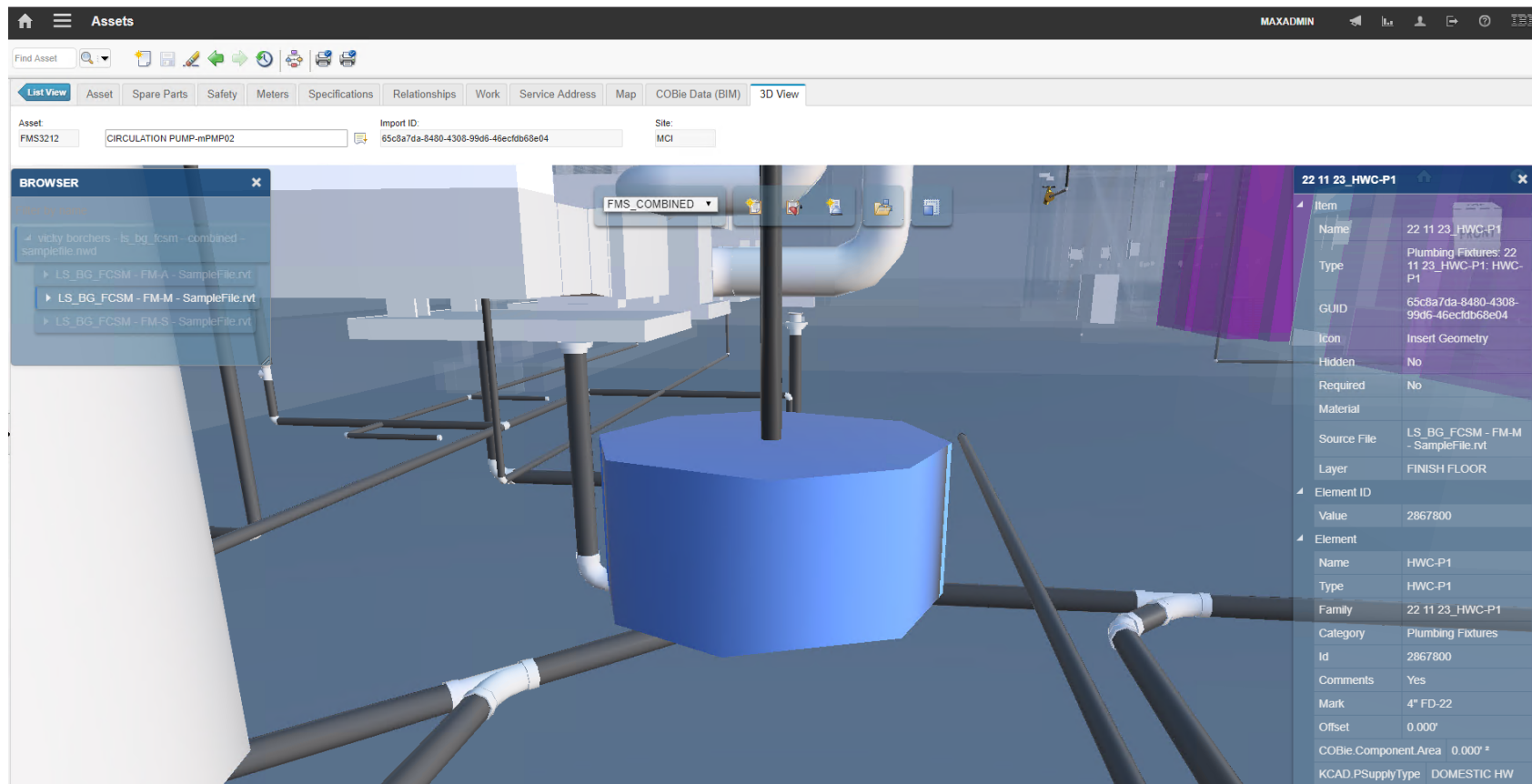
New Project = OPPORTUNITY!

- START FRESH:
 - Facilities Design Management: BIM
 - Enterprise Asset Management: Maximo
 - Good Data: BIM to COBie to Maximo Hand-Off



Pilot With New Maintenance Building



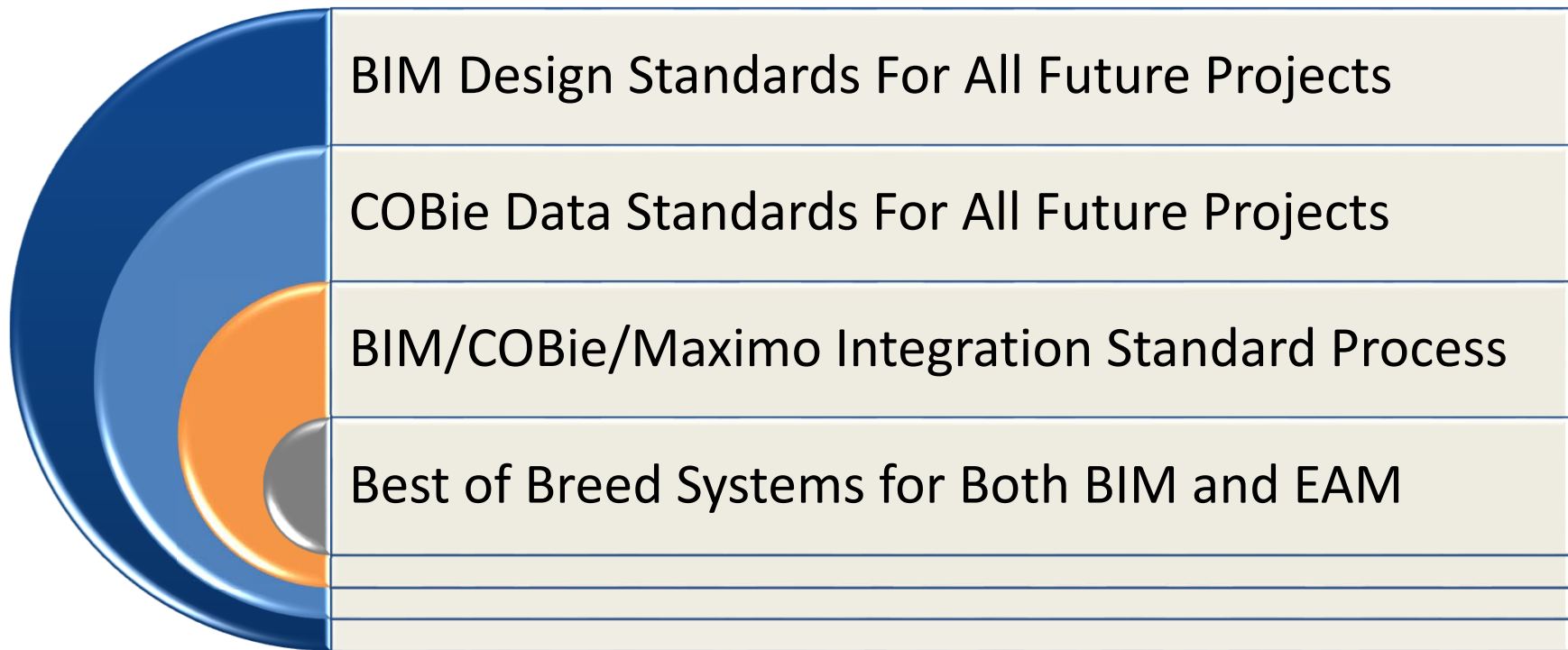


Maximo Asset Application: 3D Model View Tab w/ Asset Selected

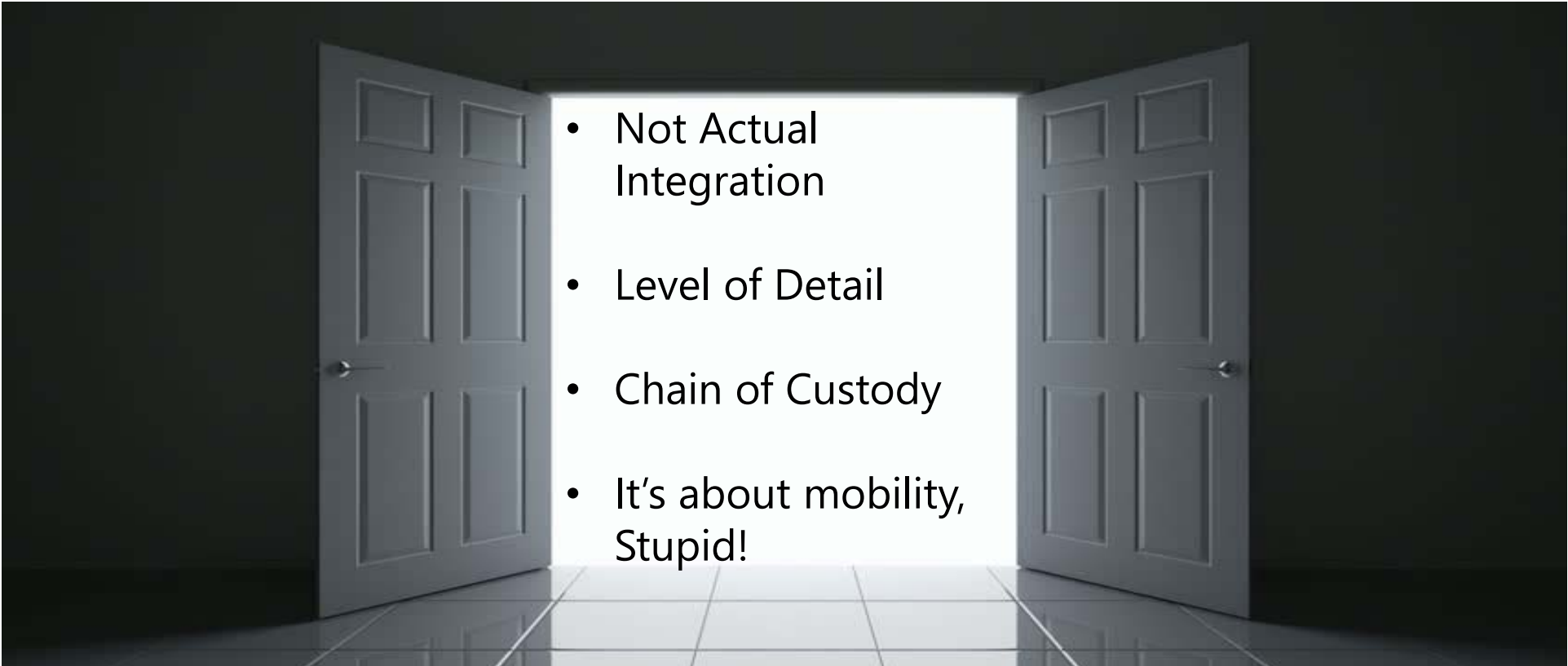
2020 Mid-Year Airport Maximo
User's Group (AMUG) Agenda



Project Deliverables



BIM/EAM Integration “Opportunities”

- 
- Not Actual Integration
 - Level of Detail
 - Chain of Custody
 - It's about mobility, Stupid!

Not an Actual Integration



- More of a data-load process
- One-way flow of data
- Maximo is a great EAM and information collector, but not a great 3D viewer
- Revit is a great design tool, but not a great execution or field data collection tool

Level of Detail and Chain of Custody

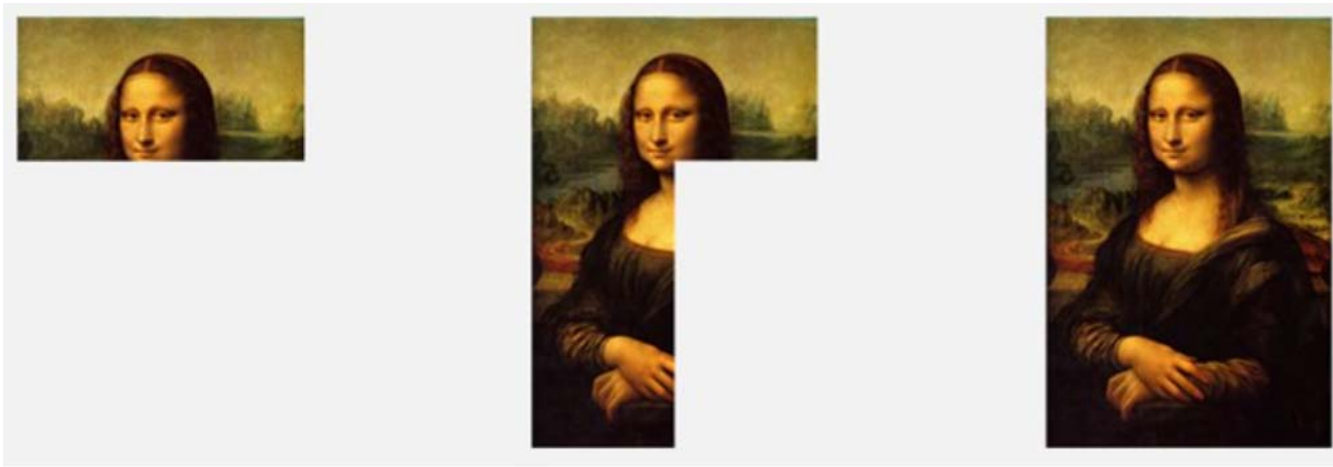


Iterative

**2020 Mid-Year Airport Maximo
User's Group (AMUG) Agenda**

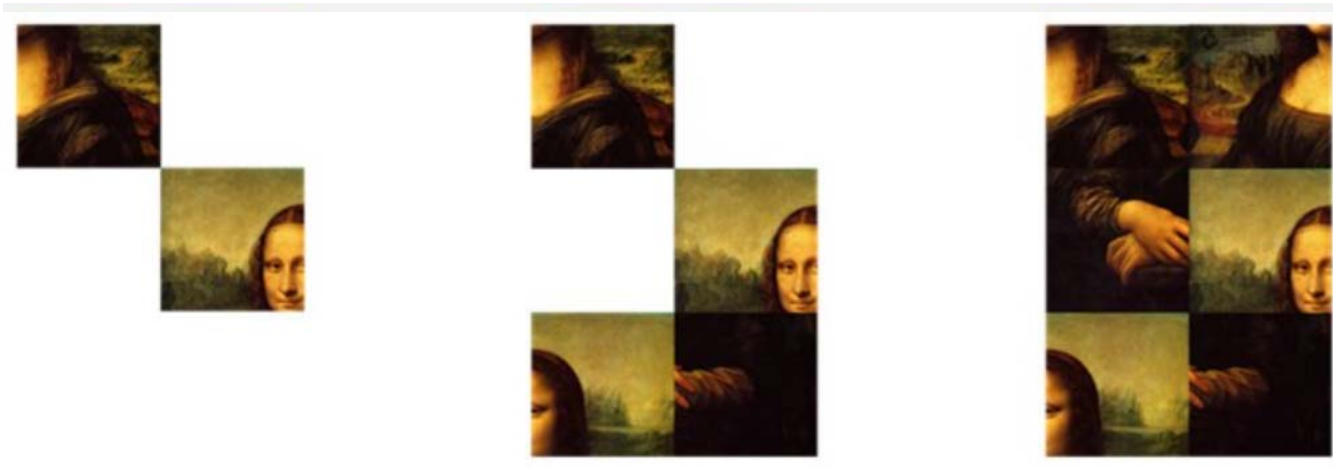


Level of Detail and Chain of Custody



Incremental

Level of Detail and Chain of Custody



Level of Detail and Chain of Custody



Success = Iterative and Incremental

Is the technology living up to the promise?

2020 Mid-Year Airport Maximo
User's Group (AMUG) Agenda



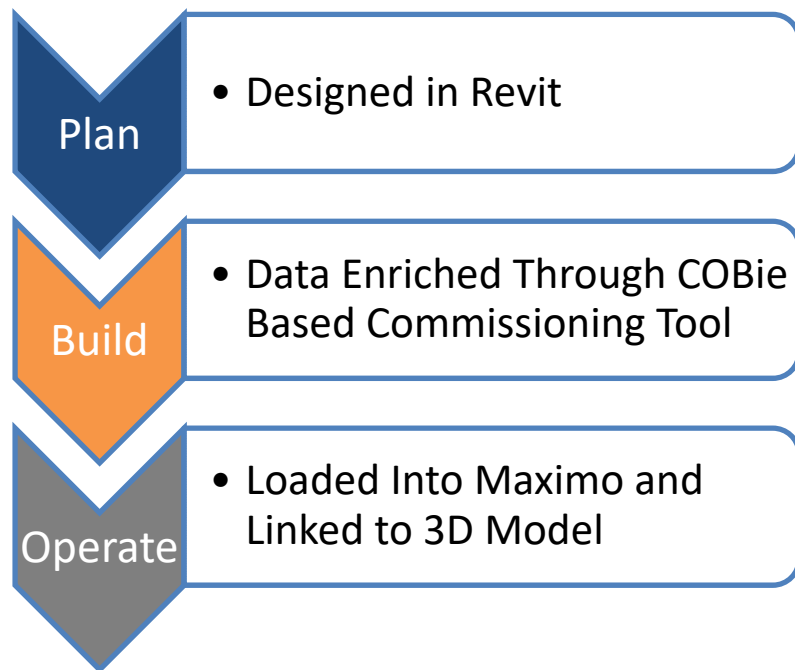
EAM of Future is Spatial-Based



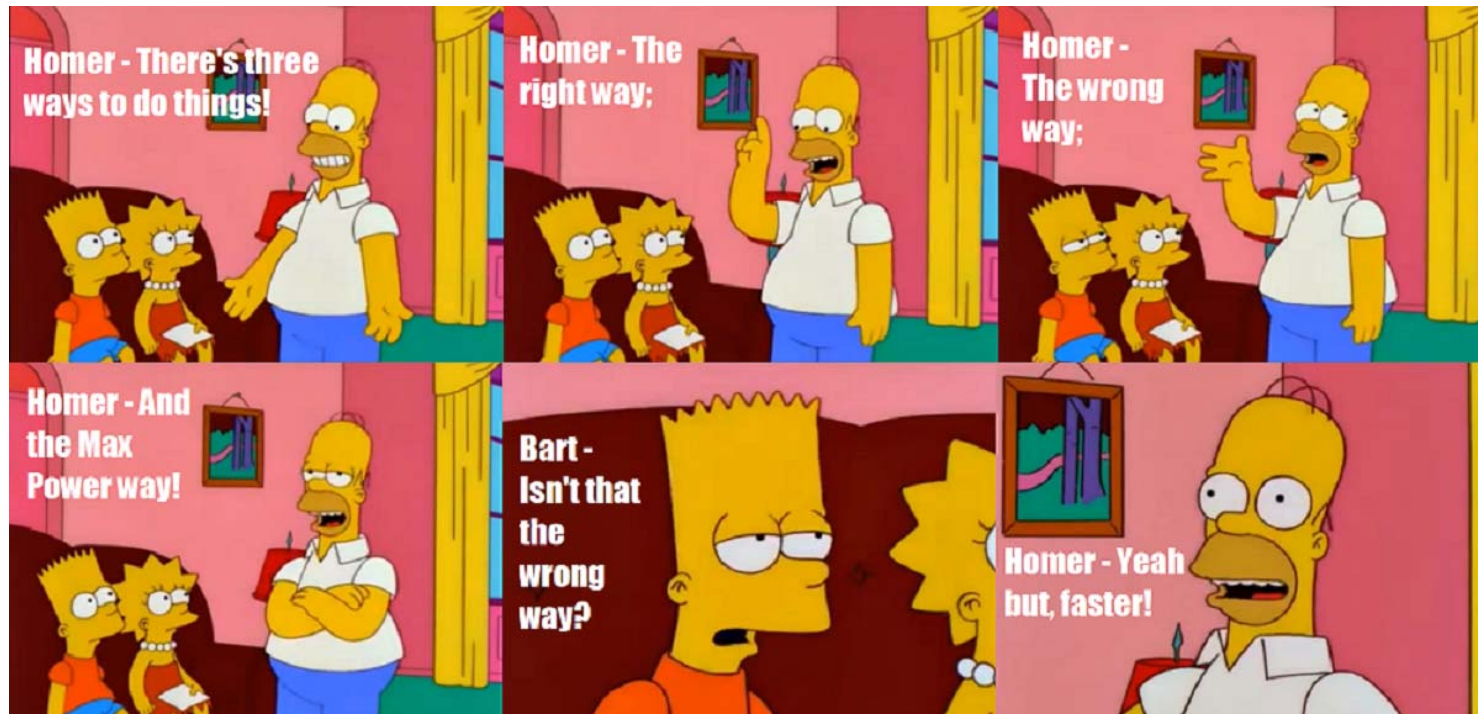
**2020 Mid-Year Airport Maximo
User's Group (AMUG) Agenda**



Gap between Plan/Build and Operate can be Bridged by Integrating BIM and EAM



Technology is NOT the Hurdle; It's People and Processes



Technology is NOT the Hurdle; It's People and Processes

The first rule of any technology used in a business is that automation applied to an efficient operation will magnify the efficiency.

The second is that automation applied to an inefficient operation will magnify the inefficiency.



-Bill Gates

Questions?

**2020 Mid-Year Airport Maximo
User's Group (AMUG) Agenda**

