

# From Questions to Consistency w/ Network Performance Mgmt

---

Brian Promes  
Alec Artosky

Feb 2, 2023



# Today's Speakers



Brian Promes



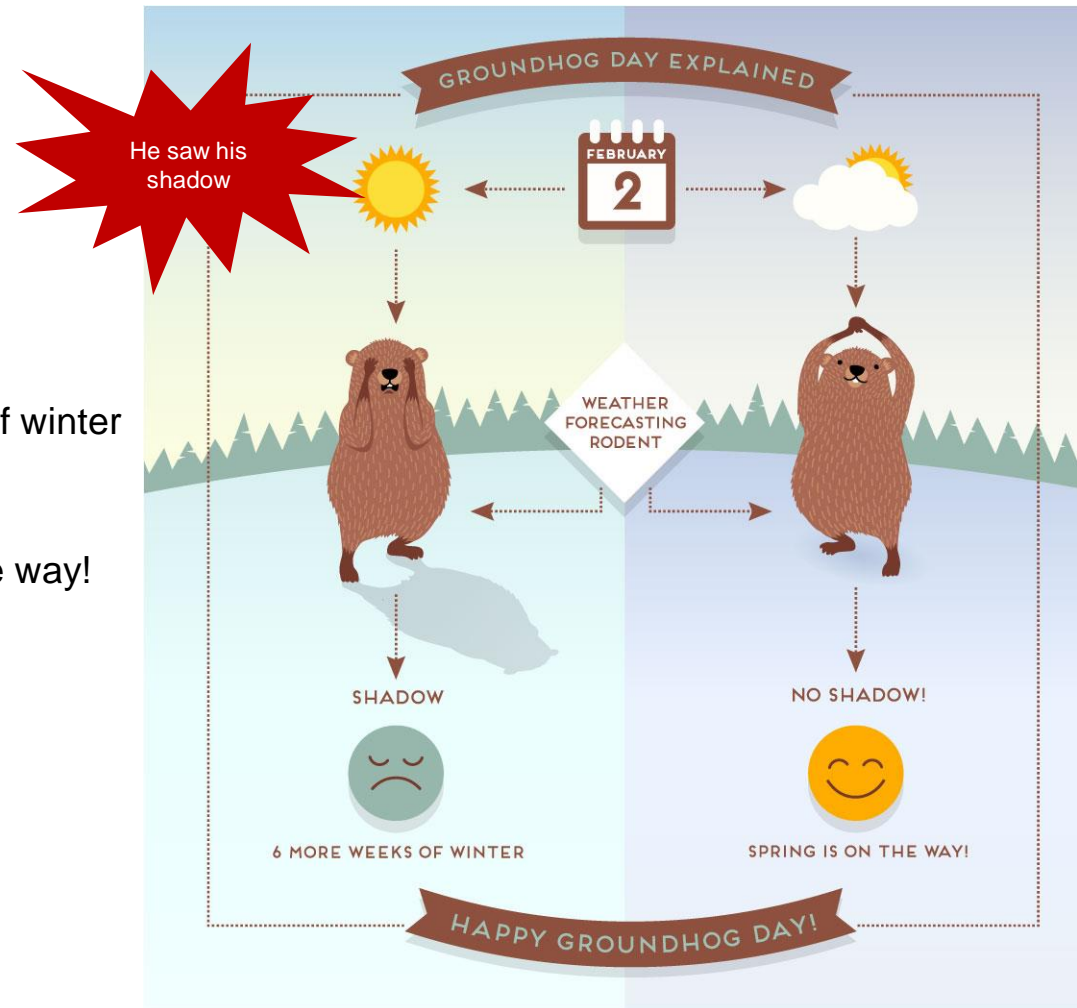
Alec Artosky

# Happy Groundhog Day!

Will “Punxsutawney Phil” see his shadow?

If he sees his shadow → 6 more weeks of winter

If he doesn't see his shadow → Spring is on the way!



# Why are we here?

Multi-national enterprise with thousands of network devices across their corporate and wide-area network

Using SolarWinds, LiveAction & Cisco Prime

Different teams...different devices...different tools

Network Operations and Capacity Planning team was constantly being asked questions about :

- Circuit utilization
- General health of network
- Growth projections

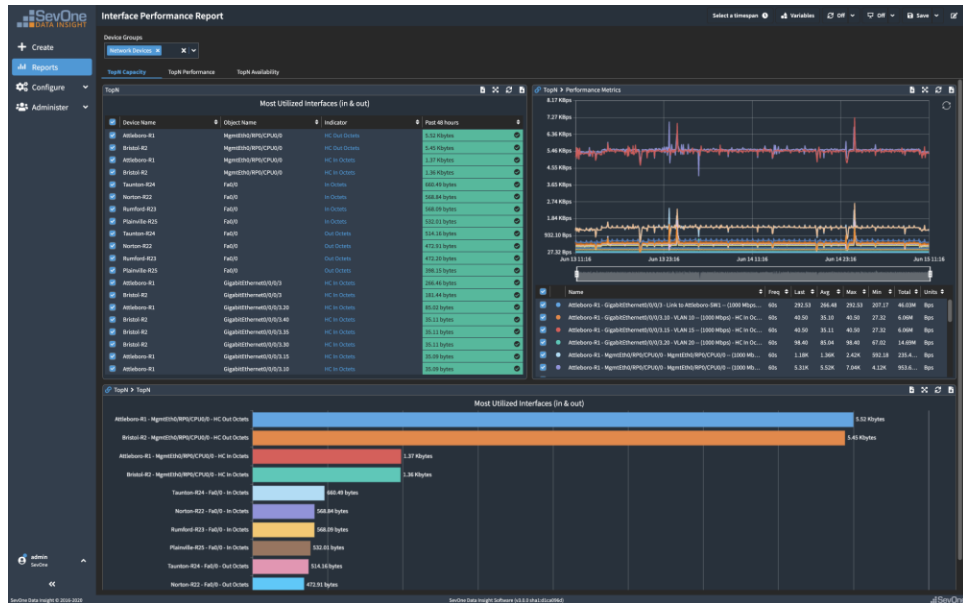
That they were unable to answer...

It was their groundhog day...



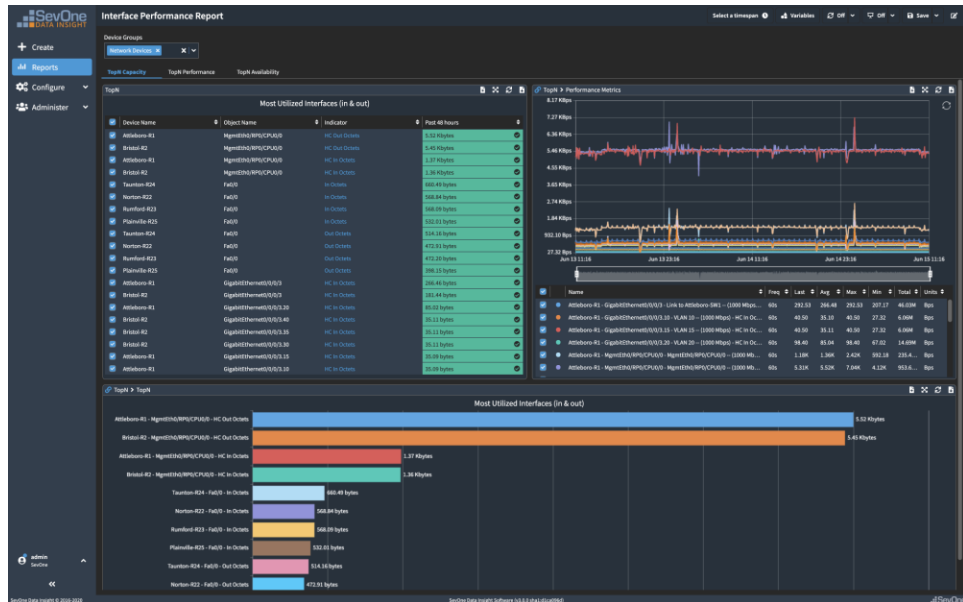
# How did IBM SevOne help?

- Consolidated three tools → one solution for a single pane of glass across all teams
- Used logical groups to help different teams just see their devices
- Used ML baselines + groups to implement proactive alerting
- Used baselines and trending to build more accurate capacity projections



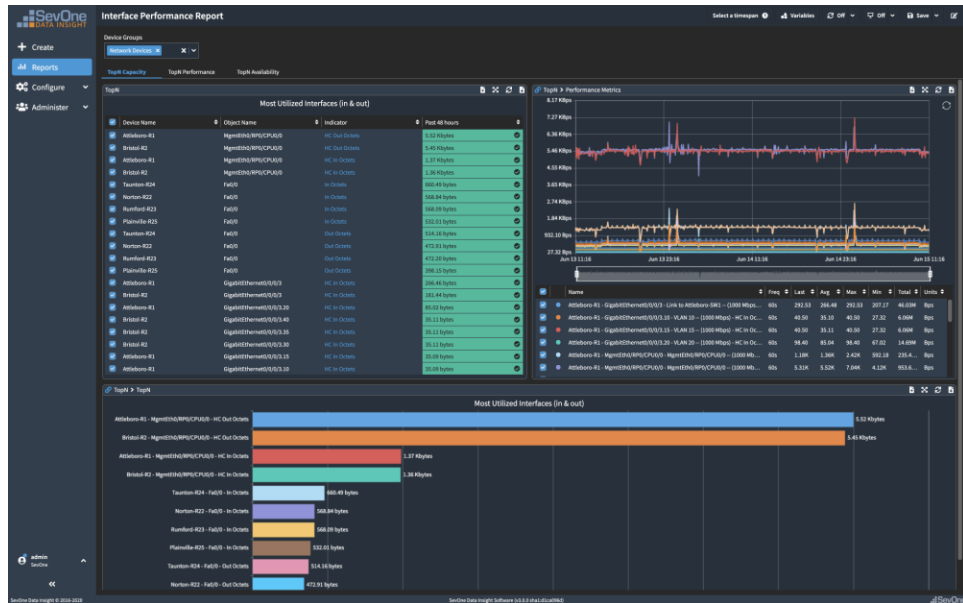
## How did IBM SevOne help?

- Consolidated three tools → one solution for a single pane of glass across all teams
- Used logical groups to help different teams just see their devices
- Used ML baselines + groups to implement proactive alerting
- Used baselines and trending to build more accurate capacity projections



# How did IBM SevOne help?

- Consolidated three tools → one solution for a single pane of glass across all teams
- Used logical groups to help different teams just see their devices
- Used ML baselines + groups to implement proactive alerting
- Used baselines and trending to build more accurate capacity projections



# How did IBM SevOne help?

- Consolidated three tools → one solution for a single pane of glass across all teams
- Used logical groups to help different teams just see their devices
- Used ML baselines + groups to implement proactive alerting
- Used baselines and trending to build more accurate capacity projections

