

# IBM MDM Express

## An MDM Solution for Productive Use in Hours or Days

Pankuj Chachra -- Program Director - MDM/Entity Analytics  
Engineering  
[pankuj@us.ibm.com](mailto:pankuj@us.ibm.com)

Jason Mathew – Offering Manager – IBM MDM Express  
[Jason.Mathew@ibm.com](mailto:Jason.Mathew@ibm.com)

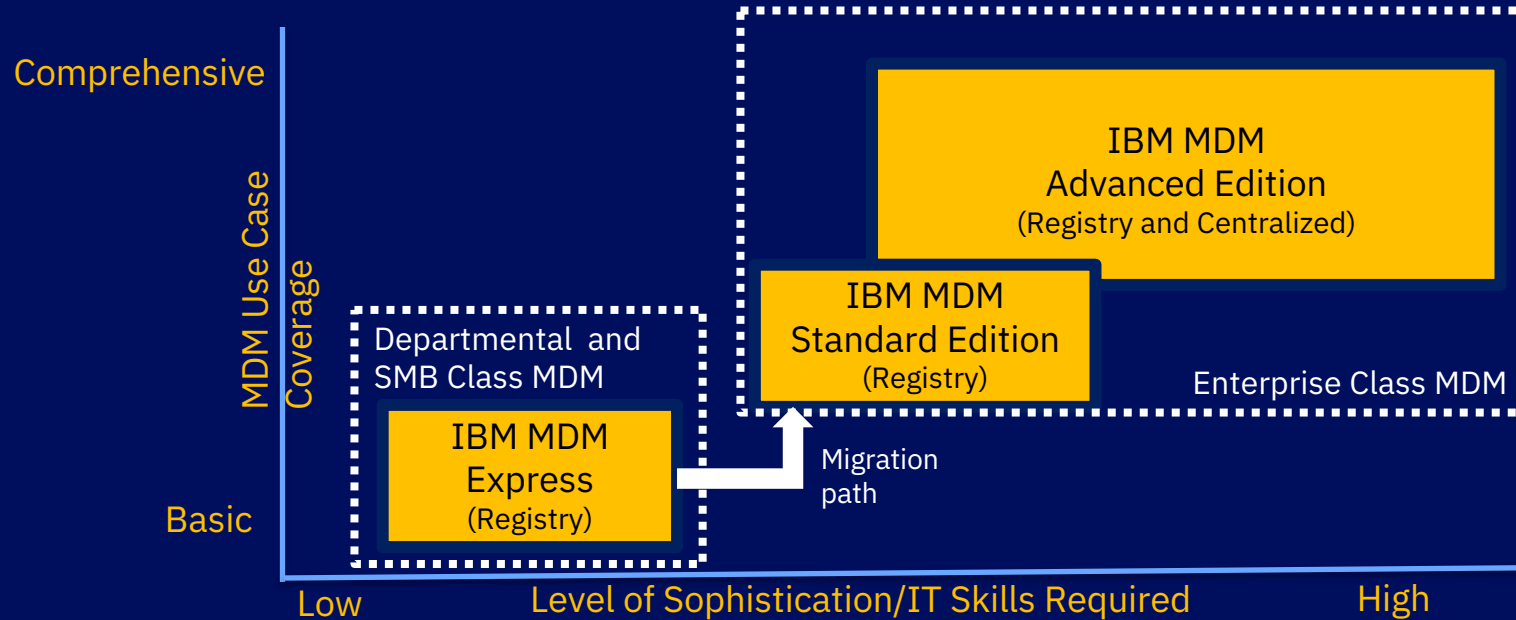


## Legal Disclaimer

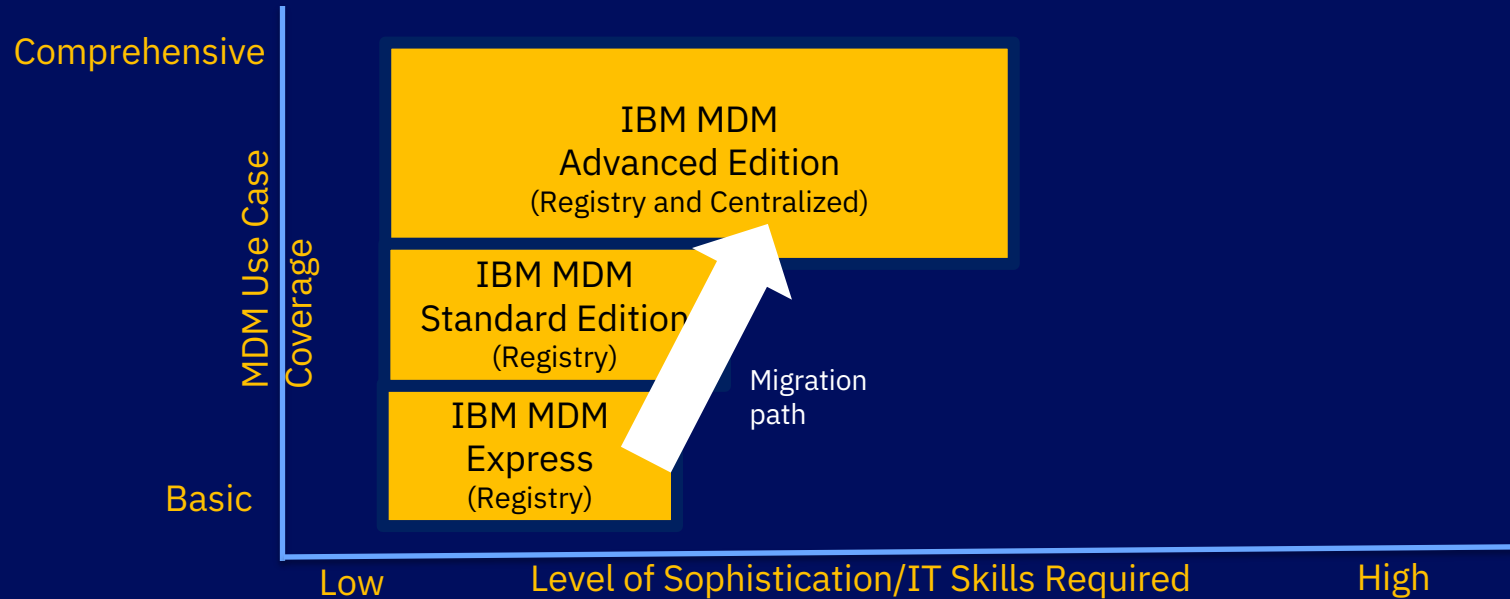
© IBM Corporation 2018. All Rights Reserved.

- The information contained in this publication is provided for informational purposes only. While efforts were made to verify the completeness and accuracy of the information contained in this publication, it is provided AS IS without warranty of any kind, express or implied. In addition, this information is based on IBM's current product plans and strategy, which are subject to change by IBM without notice. IBM shall not be responsible for any damages arising out of the use of, or otherwise related to, this publication or any other materials. Nothing contained in this publication is intended to, nor shall have the effect of, creating any warranties or representations from IBM or its suppliers or licensors, or altering the terms and conditions of the applicable license agreement governing the use of IBM software.
- References in this presentation to IBM products, programs, or services do not imply that they will be available in all countries in which IBM operates. Product release dates and/or capabilities referenced in this presentation may change at any time at IBM's sole discretion based on market opportunities or other factors, and are not intended to be a commitment to future product or feature availability in any way. Nothing contained in these materials is intended to, nor shall have the effect of, stating or implying that any activities undertaken by you will result in any specific sales, revenue growth or other results.

# IBM Express MDM Portfolio Landscape



# IBM Express MDM Portfolio Landscape



# IBM MDM Express

## Key Drivers

### Positioning Statement:

- For **small-medium enterprises or departmental** deployments in larger organization to be able to easily and rapidly implement a master data solution to overcome duplication of key entity information in siloed data sources and create a single view of customer.
- Leverage this master data through an intuitive user interface for use by **business users** and allow for master data to be consumed in **batch and real-time** by business systems and downstream processes.
- For organizations that require management of data subject **consent information** to be able to quickly meet requirements of the GDPR or other regulation.
- Accomplish this goal **in hours or a few days without requiring IT-level resources** and be able to deploy on common Windows or Linux platform.



### IBM MDM Express and IBM MDM Portfolio

- MDM Express leverages core components from other MDM portfolio offerings and is part of that portfolio. Conversely new capabilities in MDM Express (ML enabled data mapping/classification) should be take forward into core MDM offerings.
- MDM Express addresses a new space of the MDM market, where our existing offerings have proven to be too costly or too complex. I.e. incremental opportunity.
- Migration path from MDM Express will be created, then those that find over time that more comprehensive functionality is needed, will be able to leverage the Enterprise Class offerings.

# IBM MDM Express

## Key Characteristics:

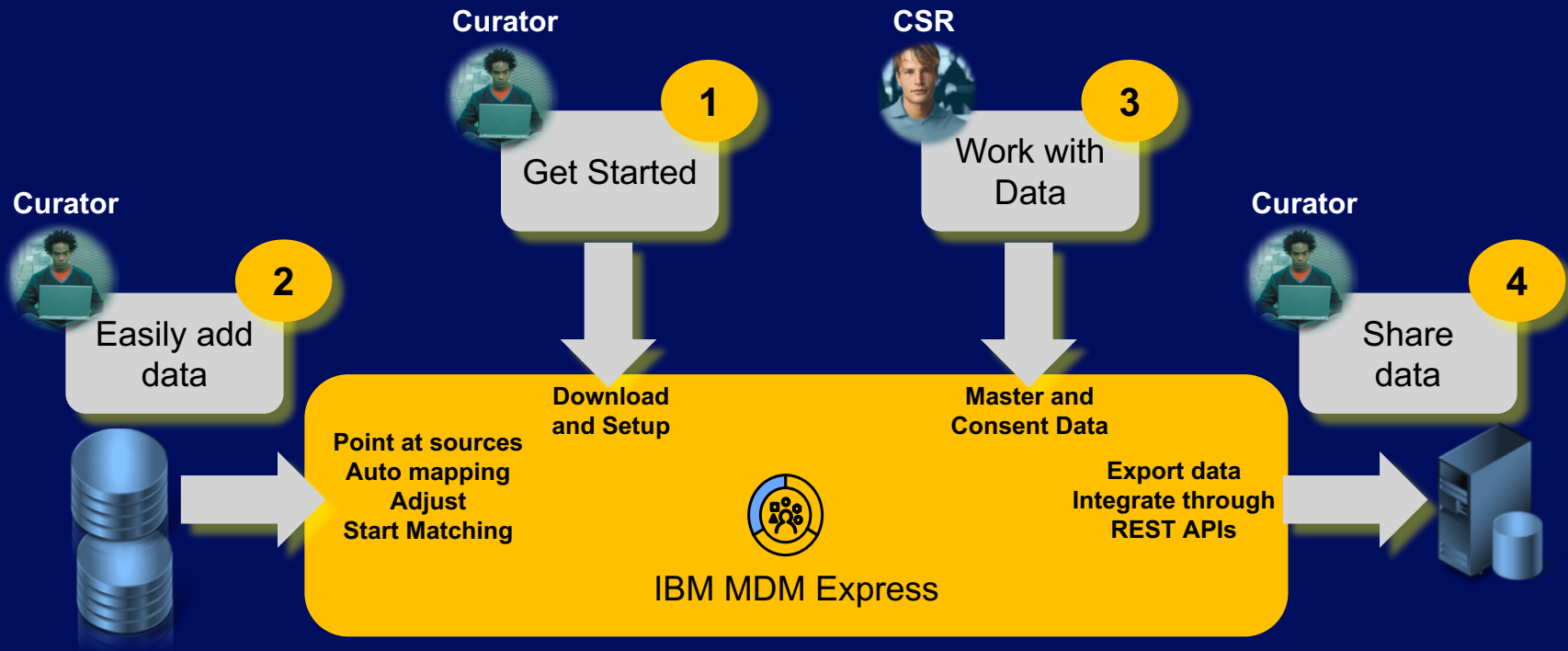
- For small-medium enterprise or departmental deployments
- Easy-to-deploy
- Intuitive user experience
- No technical experts needed to implement and operate
- Small footprint (self-contained) on Windows and Linux platforms
- Initially On Premise Offering

*Initial Release – Limited set of geo templates/ options, English only UI and documentation*

## Key Features:

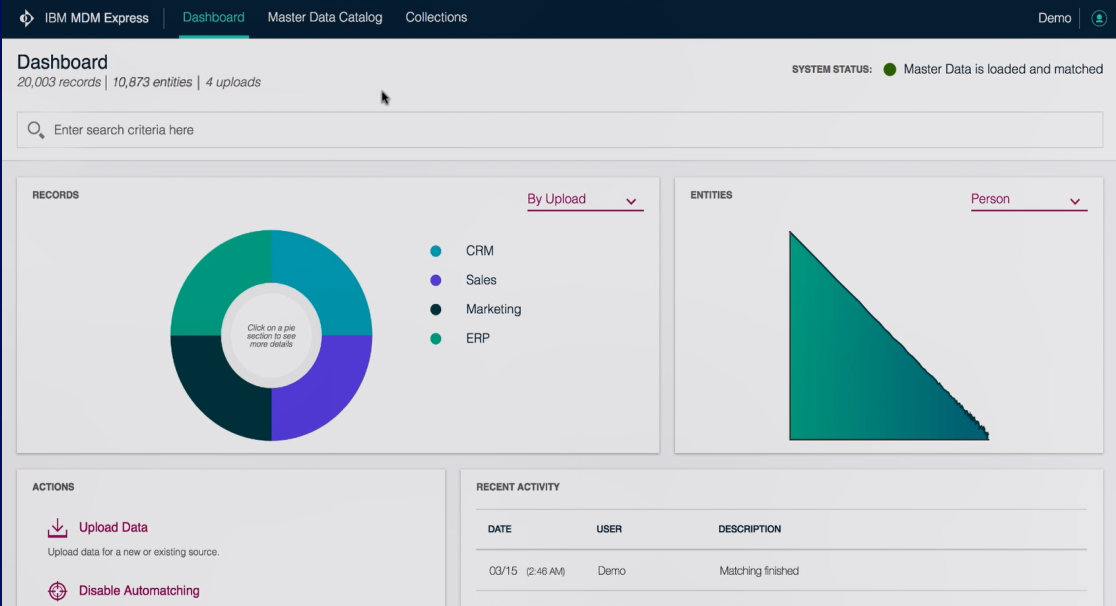
- Registry style MDM
- Geo matching templates/options OOTB
- No data stewardship required
- UI for viewing of master data (no edits)
- Embedded Consent Management capabilities (view and maintain)
- Easy export of mastered data for downstream use (analytics, big data, reporting, etc.)
- Integration through REST APIs

# IBM MDM Express



# IBM MDM Express

## Demonstration





# Where are we taking the Express?



## **Additional capabilities that we are considering**

- Additional geo based algorithms and language support
- Lineage information; insight in the matching
- Modern data stewardship (keep it simple, ML)
- Migration path to SE/AE capabilities

# Summary

- **New light-weight Offering**
- **Smarter with Cognitive Capabilities**
- **Released on May 22<sup>nd</sup>, 2018**
- **New concepts from MDM Express to carry forward throughout MDM portfolio**

