

Counting on the Cloud: Cloud Native Transactions

Ian Robinson, DE & CTO IBM App Platform

Please note

IBM's statements regarding its plans, directions, and intent are subject to change or withdrawal without notice and at IBM's sole discretion.

Information regarding potential future products is intended to outline our general product direction and it should not be relied on in making a purchasing decision.

The information mentioned regarding potential future products is not a commitment, promise, or legal obligation to deliver any material, code or functionality. Information about potential future products may not be incorporated into any contract.

The development, release, and timing of any future features or functionality described for our products remains at our sole discretion.

Performance is based on measurements and projections using standard IBM benchmarks in a controlled environment. The actual throughput or performance that any user will experience will vary depending upon many factors, including considerations such as the amount of multiprogramming in the user's job stream, the I/O configuration, the storage configuration, and the workload processed. Therefore, no assurance can be given that an individual user will achieve results similar to those stated here.

As Little as
10% of
application code
is for the happy
path.

Designing for handling errors is hard

It is expensive to test

It's what most post-release investment is spent on

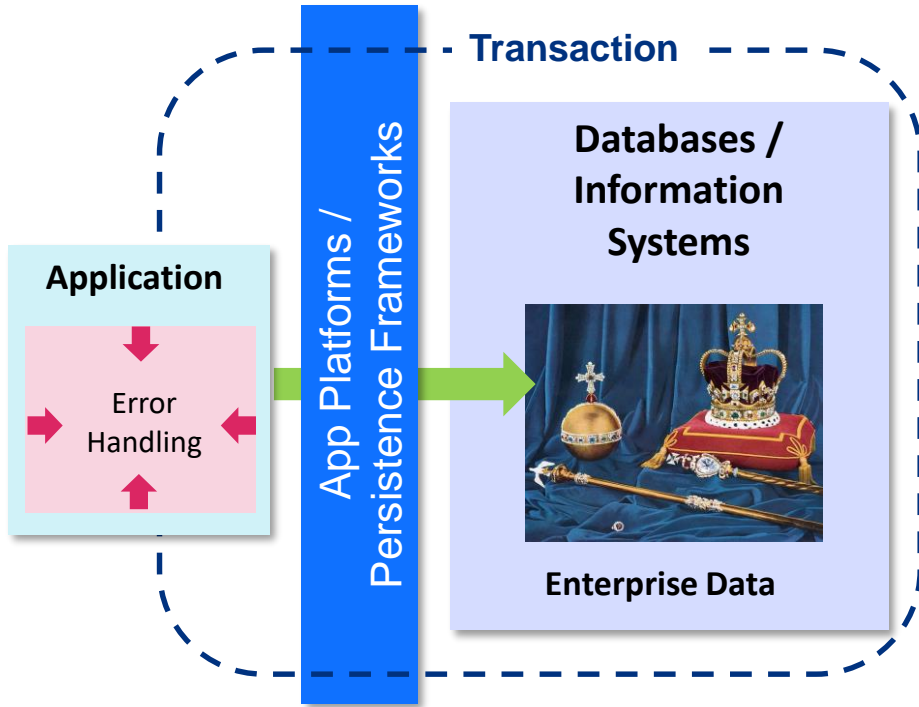


What Do Transactions Do?

Transactions
simplify how
applications
interact with
data

How do they make counting simpler?

Through access patterns that provide guarantees about the data to the application



Transactions are **Everywhere**

Most of the time, we just don't notice transactions.

Because we take them for
granted

© 2020 IBM Corporation

But we notice them when they aren't there.

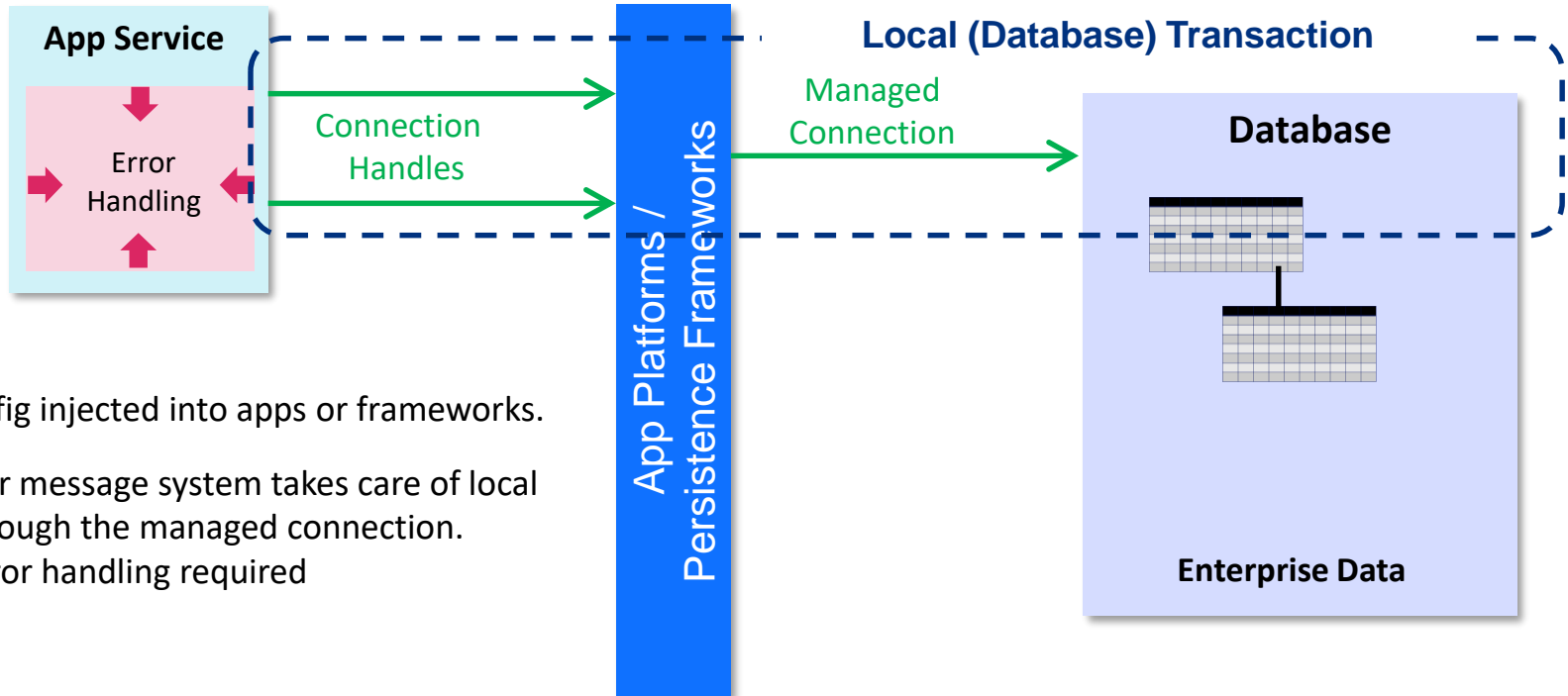
Every step on the digital evolution of the last 50 years
has introduced:

- **New opportunity** for application innovation through capability that wasn't available before
- **New complexity** in error scenarios to be handled by applications as a consequence
- **New strategies** for applications to use to eliminate or simplify that complexity



Local Transactions Used To Be Hard

but then became second nature



Connection config injected into apps or frameworks.

Back end data or message system takes care of local transactions through the managed connection.

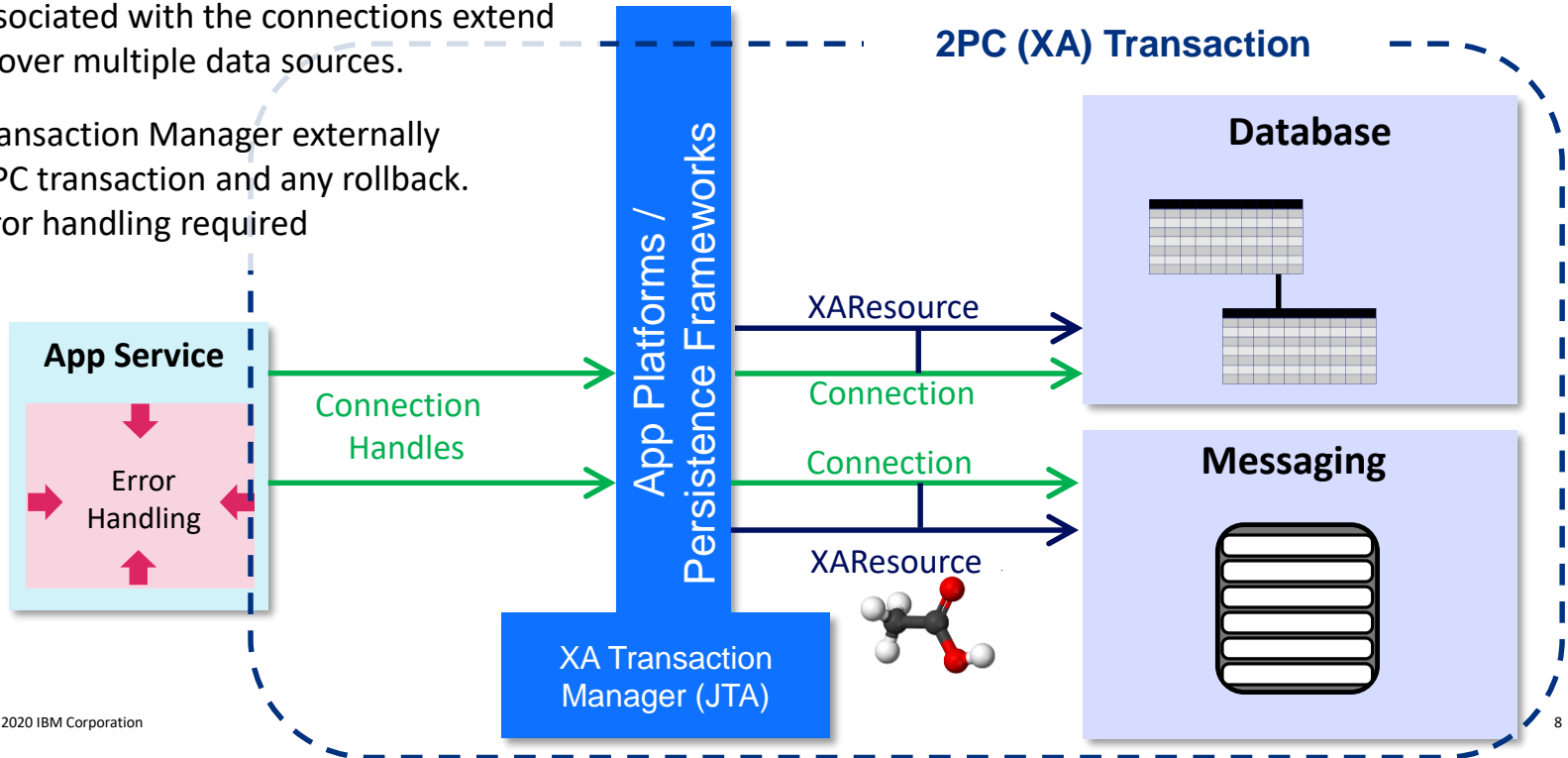
Minimal app error handling required

XA Transactions Used To Be Hard

but then became easy

XAResources associated with the connections extend the transaction over multiple data sources.

App Platform Transaction Manager externally coordinates a 2PC transaction and any rollback.
Minimal app error handling required



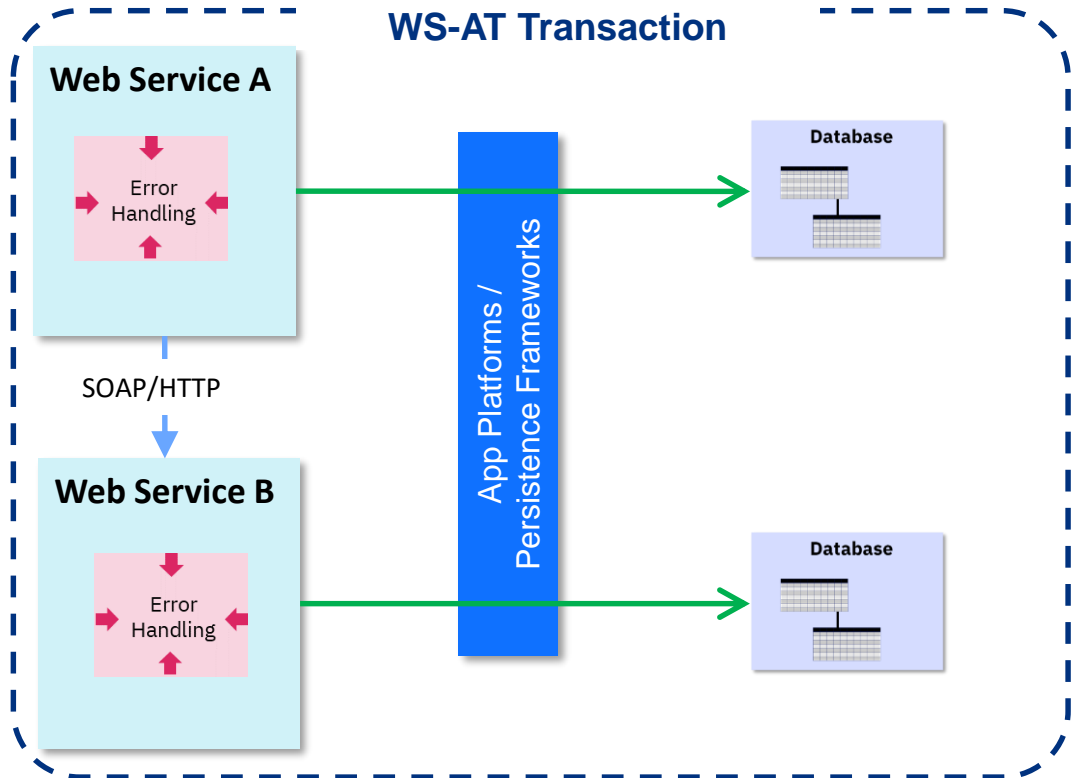
SOA and Web Services Used To Be Hard

but then became easier

Web Service transactions extended the reach of 2PC transactions across multiple applications.

WS-AT still kept application error handling minimal.

Tight-coupling of the services limited use to fine-grained SOA.



SOA and Web Services Used To Be Hard

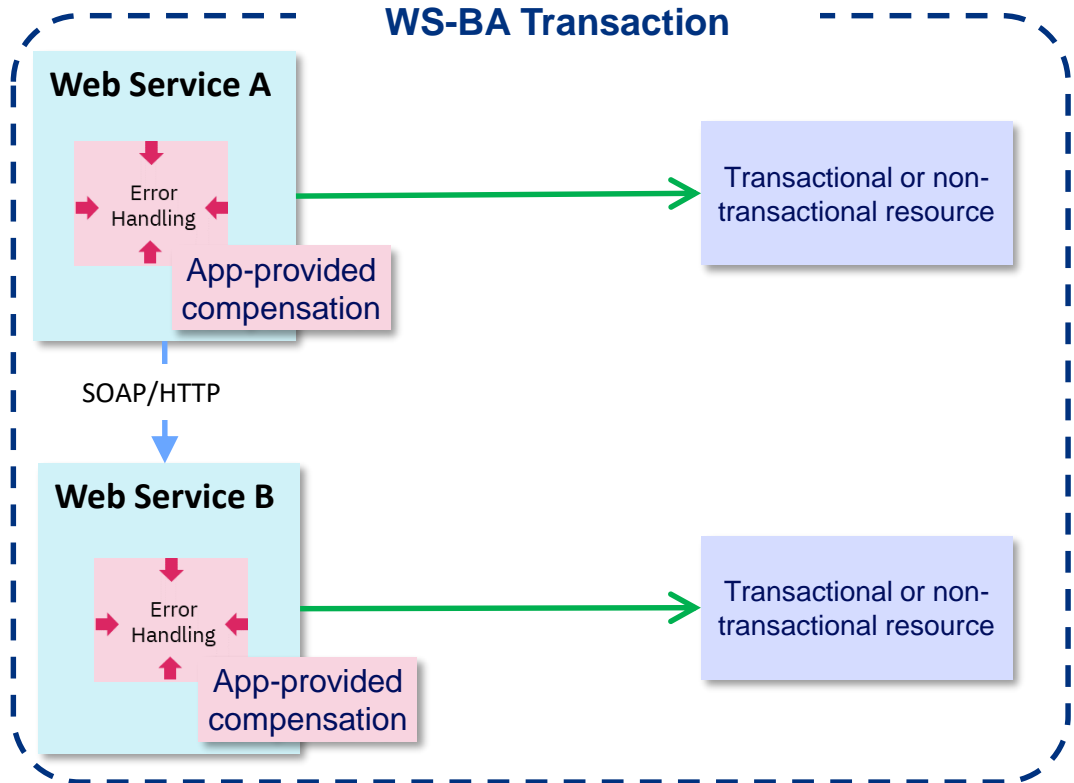
and increased the use of more loosely coupled transactions

WS-Business Activity made the use of compensating transactions more common.

Part of WebSphere since V6.1 (2006).

Application logic becomes part of the failure-handling.

Simple model for registering application compensation handlers. The platform ensures these are driven following any failure.



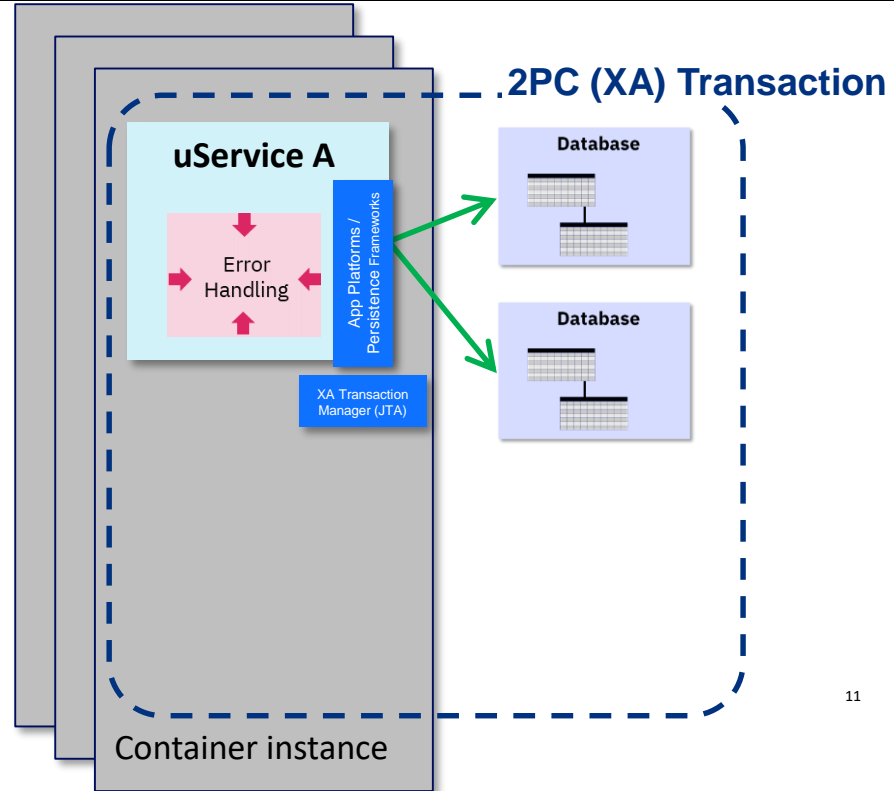
Transactions in Cloud Containers

Introduce new challenges

2PC transactions do work in containers when transactional recovery logs are properly configured in persistent storage.

Transaction peer recovery takes care of scale-down scenarios. Beware of scaling to zero as this may leave resources locked until there is a new container instance.

But what if the two DBs here were accessed by different microservices?

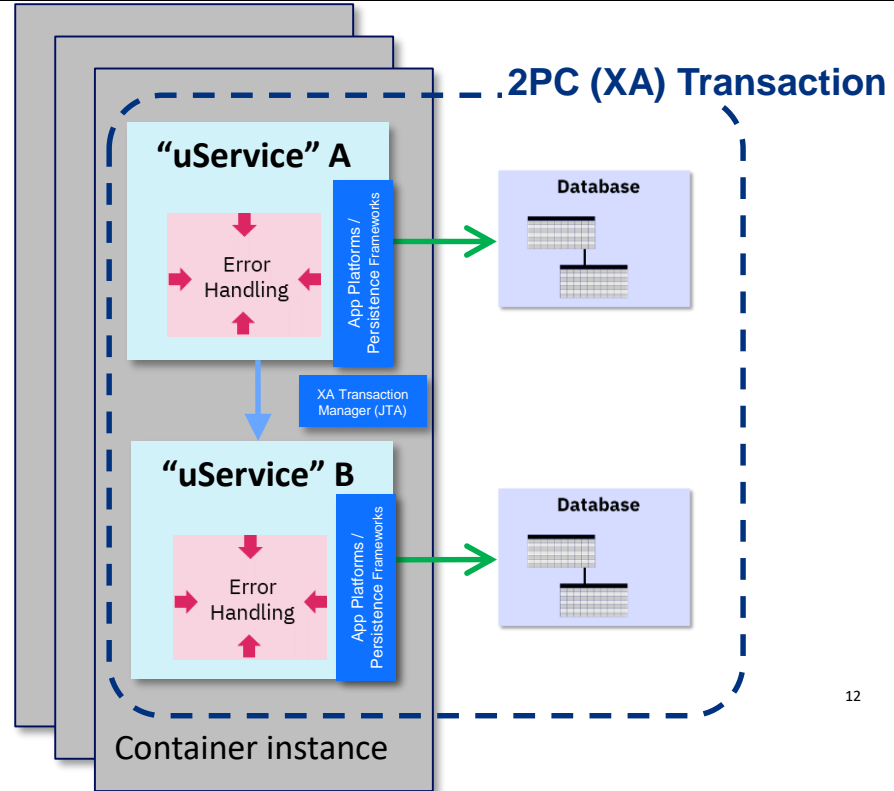


Transactions in Cloud Containers

Introduce new challenges

If app design and error handling assumes 2PC, the two services are tightly coupled. There really are not 2 separate microservices here as these have a single lifecycle and are not independently scalable. You would never do what is shown here.

A different transaction model is required.

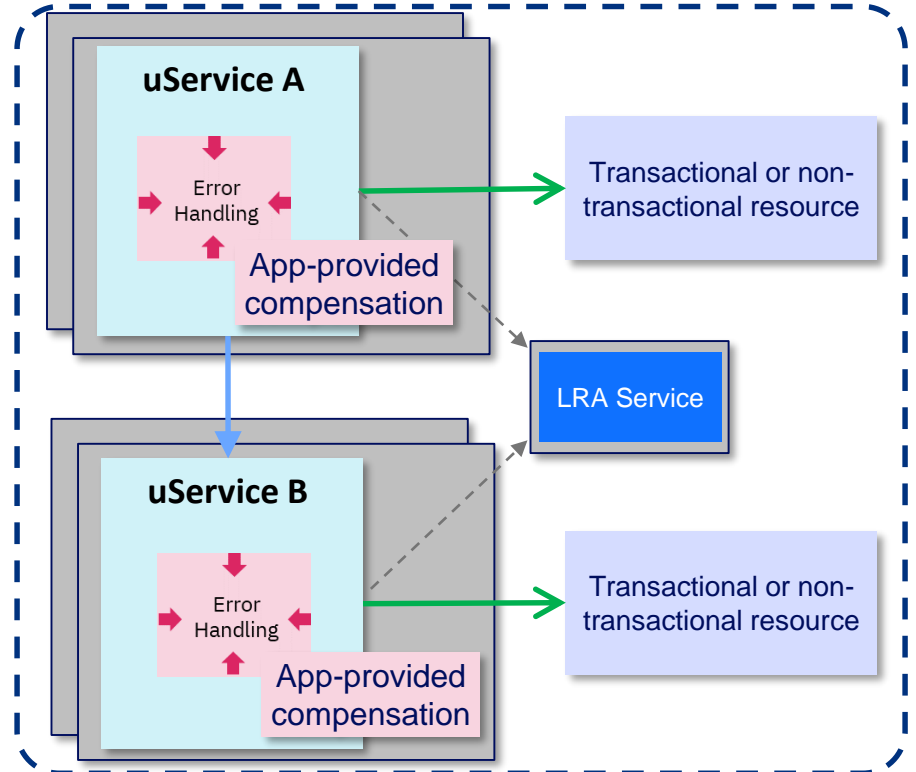


Transactions in Cloud Containers

Eventual Consistency and Long-Running Actions

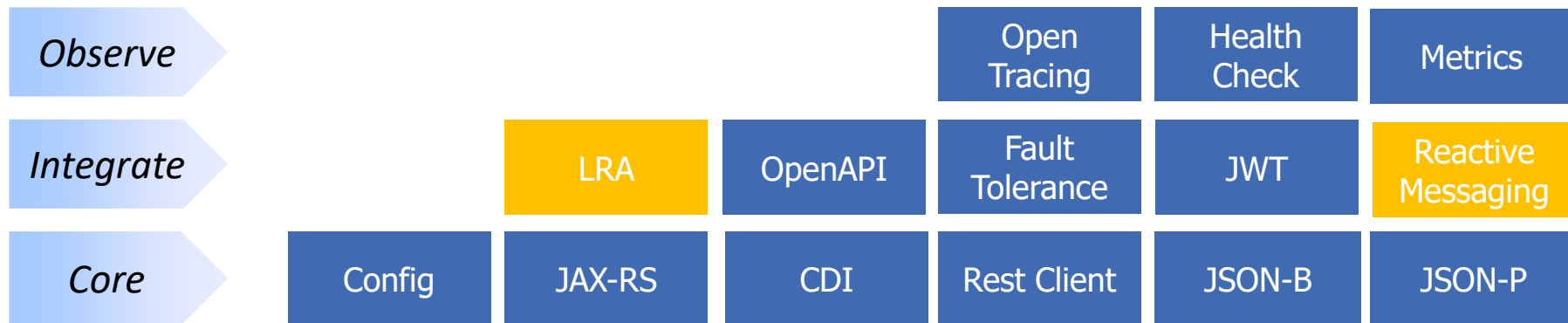
MicroProfile **Long-Running Actions (LRA)** is a model for achieving eventual consistency of data across microservices.

- Derived from the WS-BA model for Web Service Business Activities
- Simple annotation-based model.





<https://microprofile.io/>



LRA Application Annotations



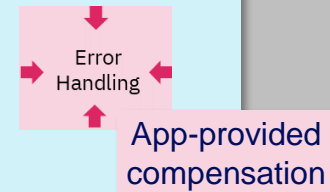
uService A

```
@Path("/")
@ApplicationScoped
public class TravelBookingService
{
    @LRA(LRA.Type.REQUIRES_NEW)
    @Path("/bookflight")
    @POST
    public Response bookFlight(@HeaderParam(...) URI LRAid)
    {...}

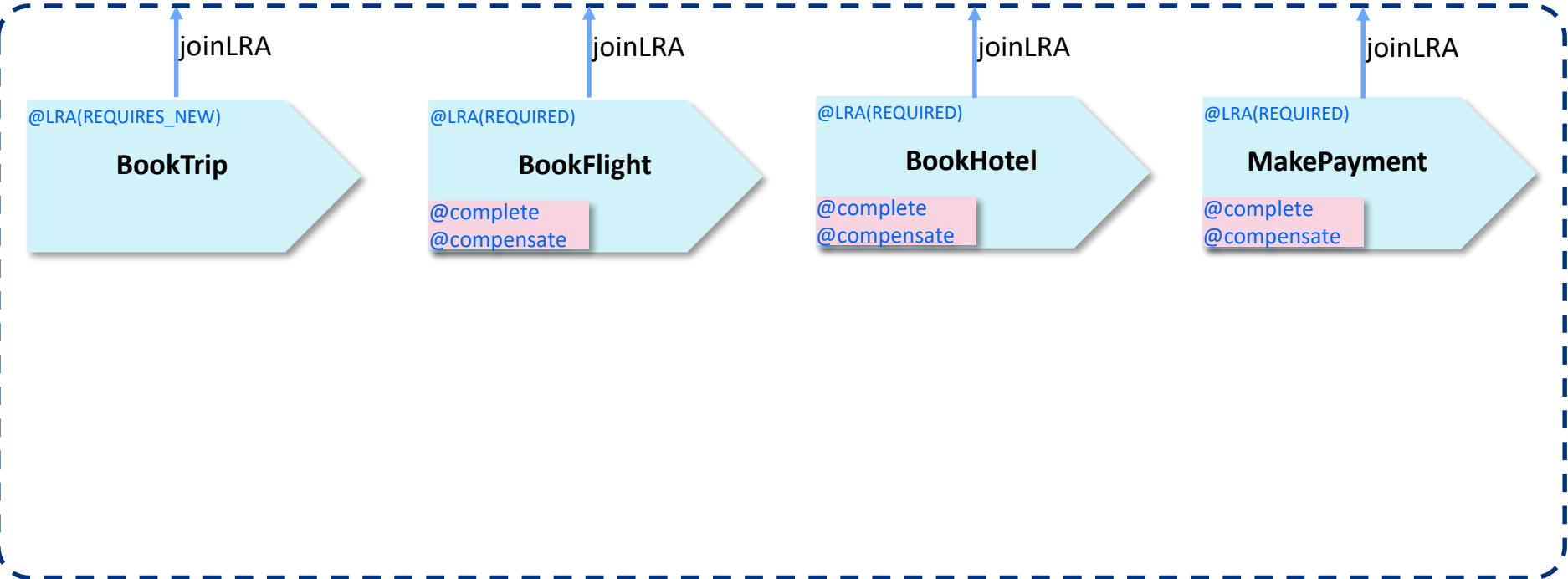
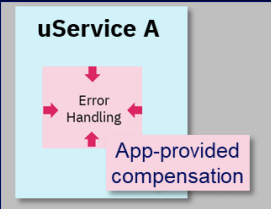
    @Complete
    @Path("/complete")
    @PUT
    public Response completeWork(@HeaderParam(...) URI LRAid)
    {...}

    @Compensate
    @Path("/compensate")
    @PUT
    public Response compensateWork(@HeaderParam(...) URI LRAid)
    {...}
}
```

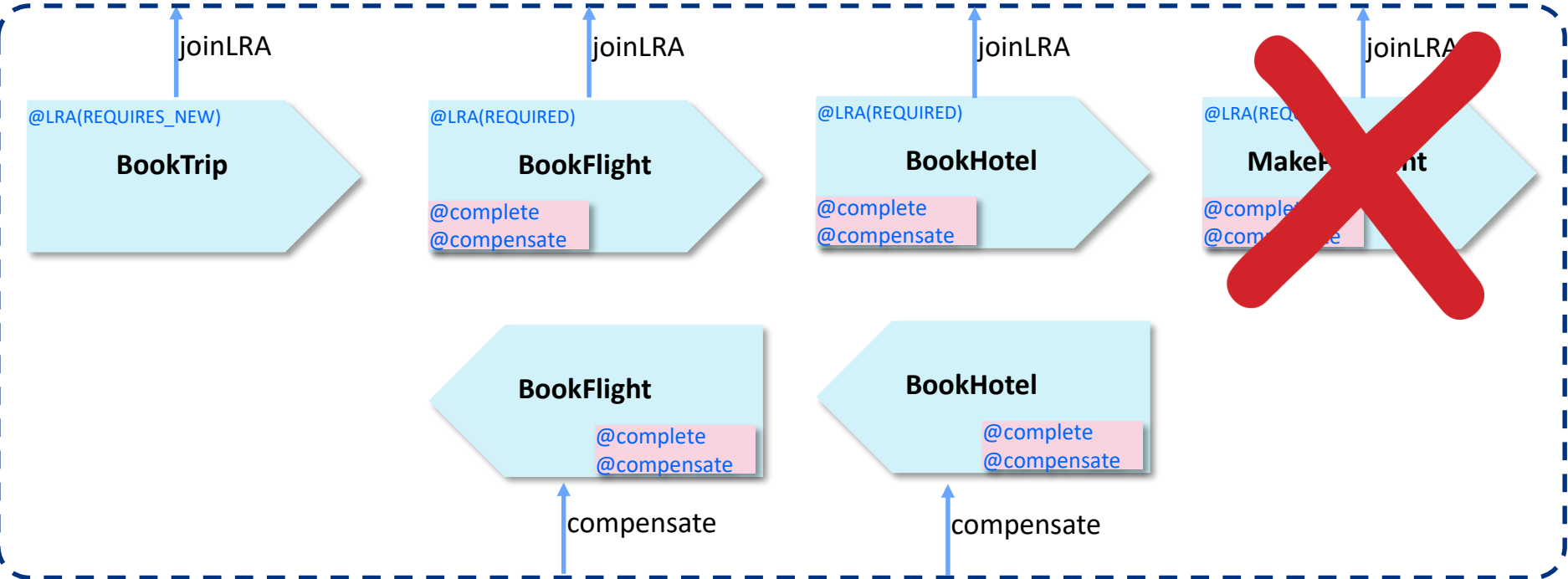
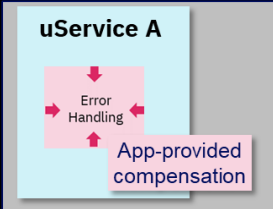
uService A



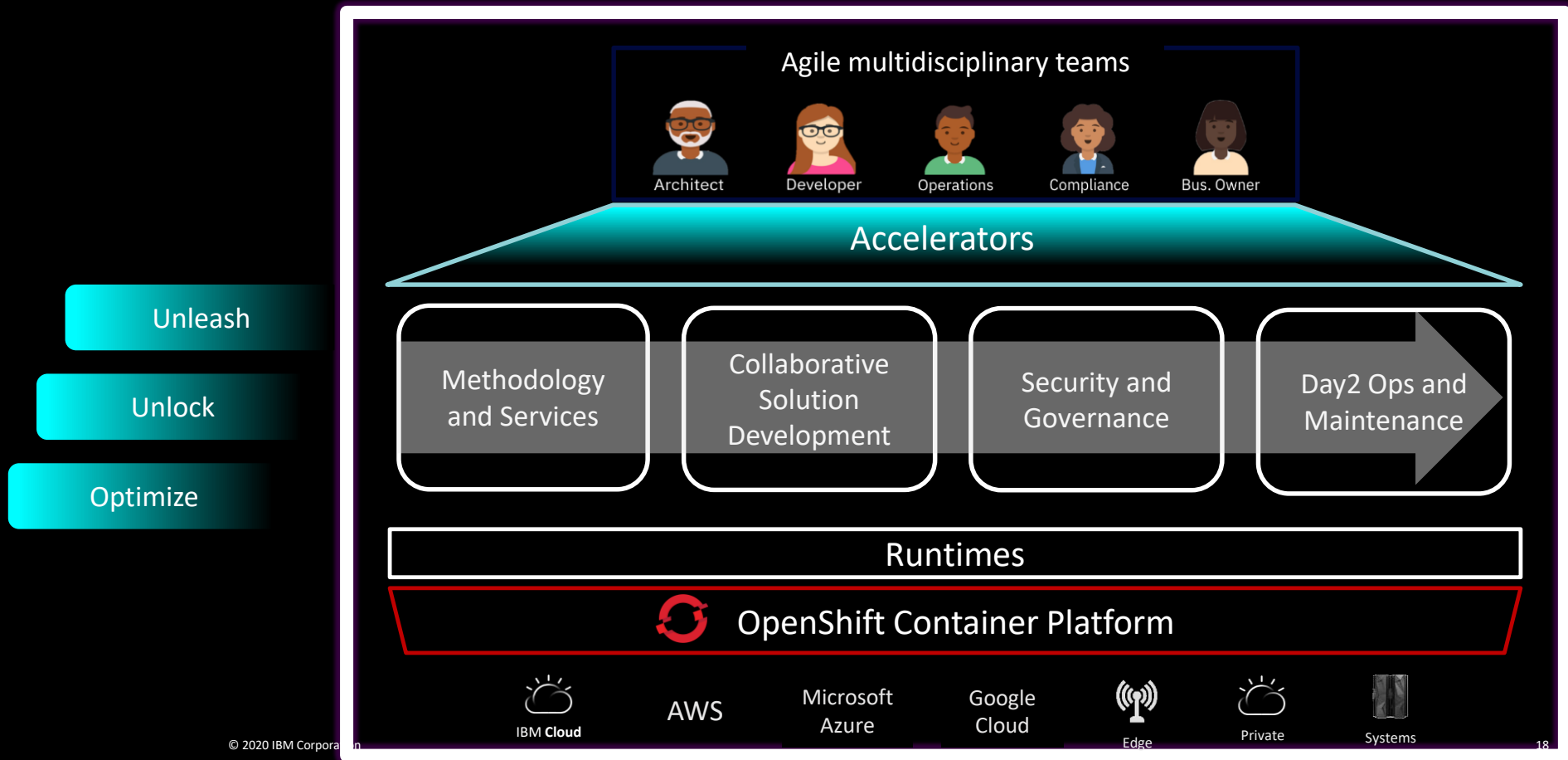
Sagas Using MicroProfile LRA



Sagas Using MicroProfile LRA



Transactions and Accelerators: IBM Cloud Pak for Applications



MicroService Transactions Used To Be Hard

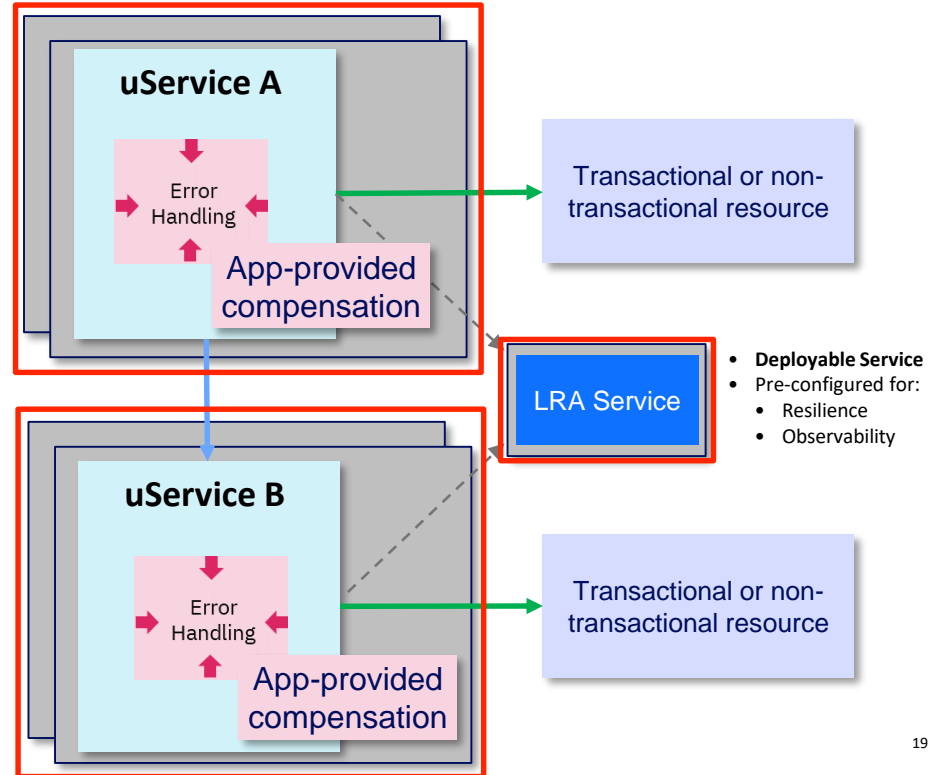
but we're making them simpler

Transactions Accelerator makes it easy to adopt the LRA pattern

- Transaction Manager deployed as a pre-configured, bindable service
- μ Services deployed using pre-configured application stacks and templates
- Metrics, Observability and Telemetry pre-configured
- Resilience and availability pre-configured

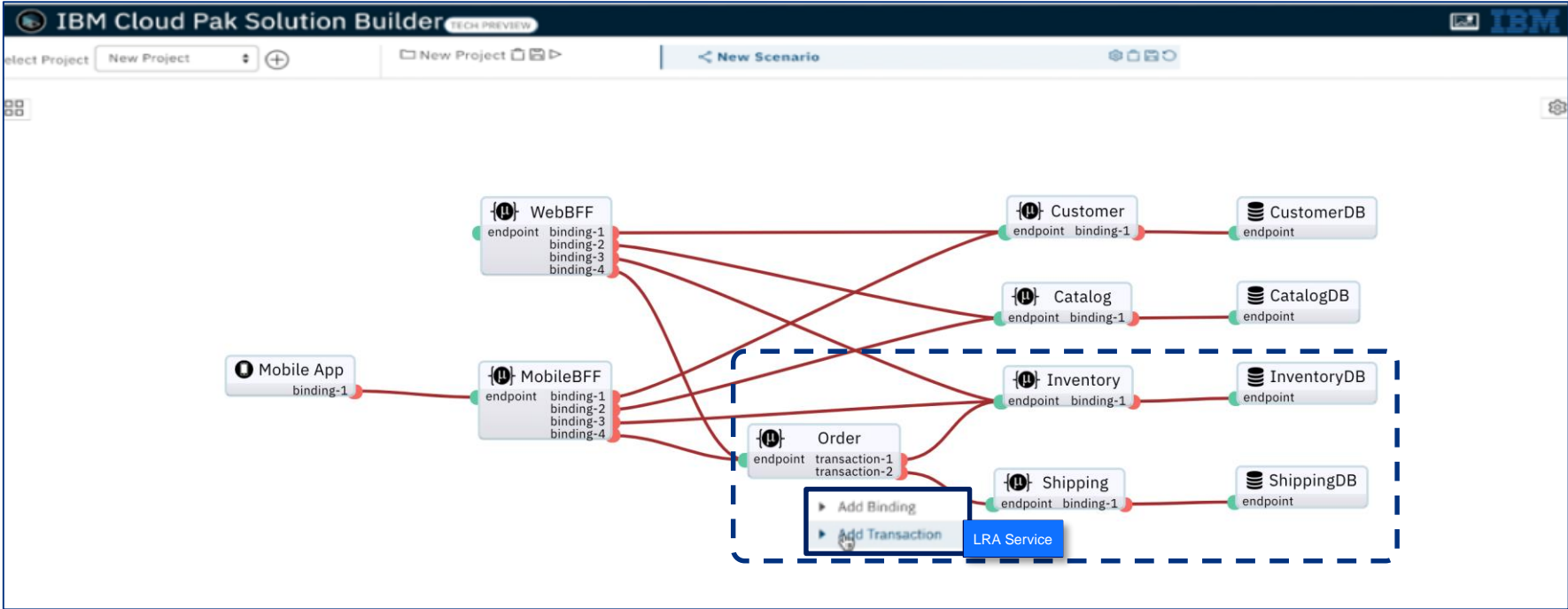
- **Application Stack**
- Pre-configured for:
 - Manager use
 - Resilience
 - Observability

- **Application Stack**
- Pre-configured for:
 - Manager use
 - Resilience
 - Observability



Accelerator for Cloud Native Transactions

Under Development – Extending IBM Cloud Pak for Apps V4.2 Accelerators



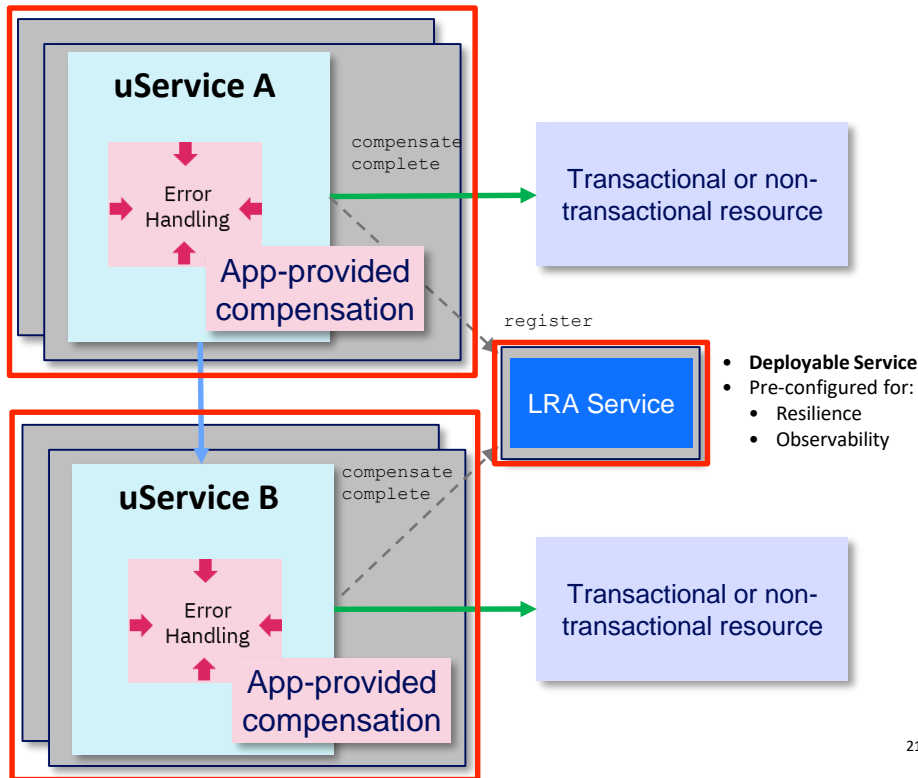
Polyglot SAGAs

Enabling the use of your language and framework of choice

Expand ecosystem to enable other languages/frameworks to participate in transactions

- Provide application SDK beyond Java MicroProfile annotations
- Integrate with non-Java application stacks for Transaction Accelerator

- **Application Stack**
- Pre-configured for:
 - Manager use
 - Resilience
 - Observability



- **Application Stack**
- Pre-configured for:
 - Manager use
 - Resilience
 - Observability



Join the CAB

WebSphere and Cloud Pak for Applications

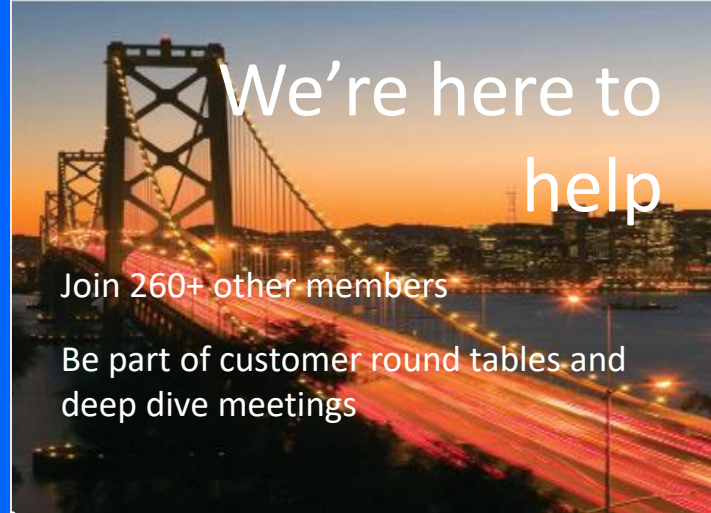
Customer Advisory Board

claudiab@us.ibm.com

<https://ibm.webex.com/meet/claudiab>

<http://ibm.biz/WASCABCommunityResources>

<http://ibm.biz/WebSphereAdvisoryBoard>



We're here to help

Join 260+ other members

Be part of customer round tables and deep dive meetings

Weekly meetings

Thursday and Friday

9:15 am EST

[JOIN](#)

Monthly meetings

Business Partner track

Time zone friendly sessions

[JOIN](#)

Other Programs

Cloud Pak Week

Previews

Demos

Labs, workshops

1-on-1

Engage when you have time:

- ✓ Stay in the loop at meetings
- ✓ Share solutions and pain points
- ✓ Connect with other customers
- ✓ Access to resources and experts
- ✓ Customized meetings
- ✓ Special offers

Notices and disclaimers

© 2020 International Business Machines Corporation. No part of this document may be reproduced or transmitted in any form without written permission from IBM.

U.S. Government Users Restricted Rights — use, duplication or disclosure restricted by GSA ADP Schedule Contract with IBM.

This document is current as of the initial date of publication and may be changed by IBM at any time. Not all offerings are available in every country in which IBM operates.

Information in these presentations (including information relating to products that have not yet been announced by IBM) has been reviewed for accuracy as of the date of initial publication and could include unintentional technical or typographical errors. IBM shall have no responsibility to update this information. **This document is distributed “as is” without any warranty, either express or implied. In no event, shall IBM be liable for any damage arising from the use of this information, including but not limited to, loss of data, business interruption, loss of profit or loss of opportunity.** IBM products and services are warranted per the terms and conditions of the agreements under which they are provided. The performance data and client examples cited are presented for illustrative purposes only. Actual performance results may vary depending on specific configurations and operating conditions.

IBM products are manufactured from new parts or new and used parts. In some cases, a product may not be new and may have been previously installed. Regardless, our warranty terms apply.”

Any statements regarding IBM's future direction, intent or product plans are subject to change or withdrawal without notice.

Performance data contained herein was generally obtained in a controlled, isolated environments. Customer examples are presented as illustrations of how those customers have used IBM products and the results they may have achieved. Actual performance, cost, savings or other results in other operating environments may vary.

References in this document to IBM products, programs, or services does not imply that IBM intends to make such products, programs or services available in all countries in which IBM operates or does business.

Workshops, sessions and associated materials may have been prepared by independent session speakers, and do not necessarily reflect the views of IBM. All materials and discussions are provided for informational purposes only, and are neither intended to, nor shall constitute legal or other guidance or advice to any individual participant or their specific situation.

Notices and disclaimers continued

It is the customer's responsibility to insure its own compliance with legal requirements and to obtain advice of competent legal counsel as to the identification and interpretation of any relevant laws and regulatory requirements that may affect the customer's business and any actions the customer may need to take to comply with such laws. IBM does not provide legal advice or represent or warrant that its services or products will ensure that the customer follows any law.

Information concerning non-IBM products was obtained from the suppliers of those products, their published announcements or other publicly available sources. IBM has not tested those products about this publication and cannot confirm the accuracy of performance, compatibility or any other claims related to non-IBM products.

Questions on the capabilities of non-IBM products should be addressed to the suppliers of those products. IBM does not warrant the quality of any third-party products, or the ability of any such third-party products to interoperate with IBM's products. **IBM expressly disclaims all warranties, expressed or implied, including but not limited to, the implied warranties of merchantability and fitness for a purpose.**

The provision of the information contained herein is not intended to, and does not, grant any right or license under any IBM patents, copyrights, trademarks or other intellectual property right.

IBM, the IBM logo, and ibm.com are trademarks of International Business Machines Corporation, registered in many jurisdictions worldwide. Other product and service names might be trademarks of IBM or other companies. A current list of IBM trademarks is available on the Web at "Copyright and trademark information" at: www.ibm.com/legal/copytrade.shtml.

Thank you

Ian Robinson, CTO IBM App Platform

