

IBM i Access Client Solutions

Strategic tools for accessing and managing IBM i

Highlights

- Innovative access to many features and functions of IBM i
- Use your favorite PC device, runs virtually anywhere
- New interfaces to improve productivity and simplify work activities
- Single solution deployable from a network share simplifying currency and maintenance

Everyone needs to have the correct tools and interfaces to access IBM i. Some users have simple requirements and others have complex needs when accessing and managing many aspects of their IBM i environments. IBM i Access Client Solutions (ACS) provides a rich set of strategic interfaces for many aspects of the operating system. Of course, everyone wants to use the client device of their choice.

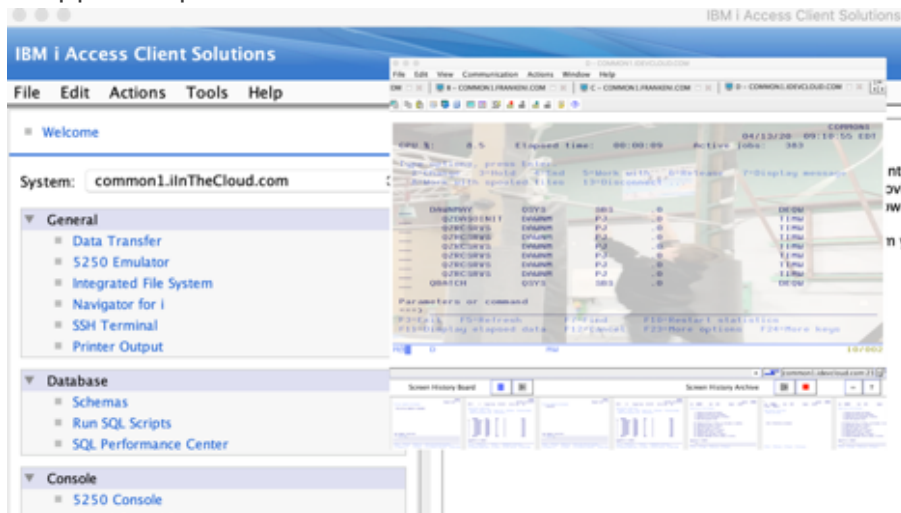
ACS provides a wide range of connection interfaces that run on virtually any PC device. It also runs on IBM i.

ACS contains the "best" 5250 emulator. It has been customized and tuned specifically for the IBM i user. This includes access to the system console and virtual control panel for those that need to manage the system.

Modern 5250 Emulator

IBM i Access Client Solutions includes the best, most modern and highly customized emulator for the IBM i user. It has many features to help the user do their job better including:

- Screen history- Keep track of all the screens shown
- Watermark support- Understand the system you are working on clearly
- National language support- Easily switch between different languages
- Use scroll wheel or touch pad for page up and page down actions
- Tight integration between functions- Simple to switch to other interfaces
- Console support- Option available for newer IBM i releases



Flexible Deployment Options

One of the powerful features of ACS are the flexible deployment options. ACS is not an installed product. It is deployed to the users' workstation. This deployment capability means that you have choices on where the ACS runtime can live. You can have it local on the users' PC, on a thumb drive, or it can reside on a network share. Having ACS on a network share means that upgrades are super simple. Update the network share, and ALL users running from that location will now have the very latest next time they restart ACS. ACS leverages Java as its runtime environment. It does not ship Java with the product, but instead gives you options on using the version and type of Java that makes the most sense for your environment. It means you can use OpenJDK or any other version of Java you want. Additionally, as an administrator, you can package up ACS specifying the restrictions you want as well as including the Java runtime in the ACS package, and now the user PC does not have to install Java at all; ACS will run using the version of Java that is packaged with the product.

User Productivity Improvements

Access Client Solutions has many interfaces bundled into the product to help all types of IBM i users. They are for the basic user, the systems administrator as well as the database engineer. The goal of ACS has been to make sure that we not only make sure that options that were available in previous products are included, but to make them better. Some of the interfaces included in ACS are:

Printer Output

The printer output interface provides a high-speed way to find and view your spool files. With the powerful filter capability, you can quickly filter the results based on users, output queue, job information, data and time created as well as user specified data. From the interface, you have access to all normal function including being able to hold, release, move and delete entries. Additionally, spool files can be downloaded to the local PC and viewed either in a text format or as a PDF. Once on the local PC, it is easy to include these files in email and other means of communication.

Integrated File System

The integrated file system support provides a modern improvement on the traditional green screen WRKLNK support. Files and directories are shown in an interactive tree view allowing the user to easily navigate and find the content they want. Additionally, there are many shortcuts and filters that include options to quickly get to content, even in very large directories. The shortcut interface means you can type or copy and paste full directory paths; previous entries are remembered and can be used with a simple click. One of the useful features of this interface is the tight integration with the QFileSvr.400 support that is part of IBM i. This means that one or more files or directories can be packaged and sent to one or more systems running IBM i. There is no FTP required; the files are packaged in *SAVF and sent to the end point system, then restored to the desired destination. All security and other important file attributes are maintained. Files can be uploaded and downloaded from the local PC again, without having to have a non-secure FTP port opened.

Data Transfer

The data transfer support provides a way for users to easily create spreadsheets (Excel or Open Document format) either by using the wizard to point at a Db2 for i table or by leveraging your favorite SQL. You can also easily send data from a spreadsheet to an IBM Db2 for i table. Since ACS runs on Java, this means that you can run ACS native on IBM i as well. You can use the data transfer plugin to automate the creation of spreadsheets and do it natively on IBM i.

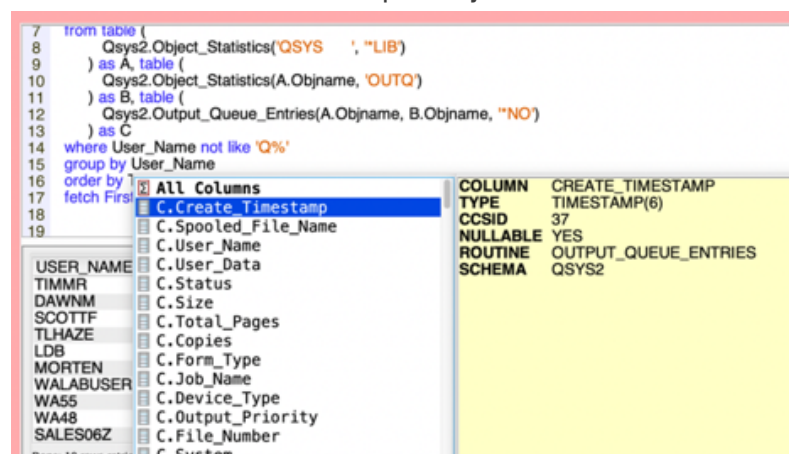
Schemas

The schemas support provides an interactive interface to all things Db2 for i. All aspects of the database can be viewed and managed with this interface. You can drill into schemas to see tables, aliases, column masks, constraints, indexes, triggers, views and so much more. Additionally, key database maintenance interfaces and functions are available.

Run SQL Scripts

Run SQL Scripts may be one of the most useful, productive and powerful interfaces delivered with ACS. This is a full-featured SQL IDE for helping both the highly skilled expert down to the novice both learn and use the power of SQL on IBM i. The basic functions you have come to depend on like Visual Explain are still part of this interface, but the ACS development team, with help and input from our user community, have taken productivity and usefulness to new levels. One of the strategic directions IBM i has taken over the past few years is to leverage SQL for not just database access and manipulation, but to extend that to being able to view, change and manage IBM i operating system data; basically, a replacement for traditional CL commands and system APIs. To support this mission and to help ensure the the user who knows nothing about SQL can still use this powerful data option, we have included Insert from Examples. Insert from Examples contains a usable example to solve a real problem for every IBM i SQL service that has been delivered.

Run SQL Scripts also provides SQL Syntax verification and a rich formatting capability allowing users to ensure SQL is written with a consistent look. The latest addition is the Content Assist support. This support helps to not only build SQL, but to easily find the columns and fields that are relevant based on the context and location of the cursor. Now you can prompt and select columns (see Figure 2) for your favorite Db2 for i tables as well as find the IBM i services and columns defined for each service with a simple key stroke.



Open Source Package Manager

The open source package manager provides a rich user interface over the traditional open source YUM based RPM installation management support. This interface allows you to see the RPM packages that have been installed on your system or the chroot location of your choice. Additionally, you can see what packages might be missing compared to the IBM RPM repository as well as what packages have been recently updated. This interface can either use the direct connection to the Internet from your IBM i environment or can leverage the new SSH tunneling option that will use the user's PC as the Internet connection for downloads and updates.

Why IBM?

IBM i Access Client Solutions is the strategic solution for providing all users a high function, improved productivity interface for accessing and managing most aspects of IBM i. With the simplified and flexible deployment options and being able to run on the PC of your choice, its quick and easy to not only get started with ACS, but also to stay current. Staying current is not something that was easily possible with previous solutions, meaning that users could be compromised with security issues as well as users with older technology being less productive.

Next steps

[Watch this demo to learn how to get started](#)

For more information

To learn more about IBM i Access Client Solutions, please contact your IBM representative or IBM Business Partner, or visit the following website:
<https://www.ibm.com/support/pages/ibm-i-access-client-solutions>

Additionally, IBM Global Financing provides numerous payment options to help you acquire the technology you need to grow your business. We provide full lifecycle management of IT products and services, from acquisition to disposition. For more information, visit: ibm.com/financing

© Copyright IBM Corporation 2020.

IBM, the IBM logo, and ibm.com are trademarks of International Business Machines Corp., registered in many jurisdictions worldwide. Other product and service names might be trademarks of IBM or other companies. A current list of IBM trademarks is available on the Web at <https://www.ibm.com/legal/us/en/copytrade.shtml>, and select third party trademarks that might be referenced in this document is available at https://www.ibm.com/legal/us/en/copytrade.shtml#section_4.

This document contains information pertaining to the following IBM products which are trademarks and/or registered trademarks of IBM Corporation:

IBM®, POWER9™, POWER SYSTEMS™



All statements regarding IBM's future direction and intent are subject to change or withdrawal without notice, and represent goals and objectives only.