

What's new in IBM Security i2® iBase 9.0

Major new release includes improvements to performance, security and usability.

i2 iBase an intuitive intelligence data management application that enables collaborative teams of analysts to configure, capture, control, analyze and display multi-source data in security-rich workgroup environments. It addresses the analyst's daily challenge of discovering and uncovering networks, patterns, and trends in the increasing volumes of complex structured and unstructured data.

For existing i2 iBase users, version 9.0 delivers the following enhancements:

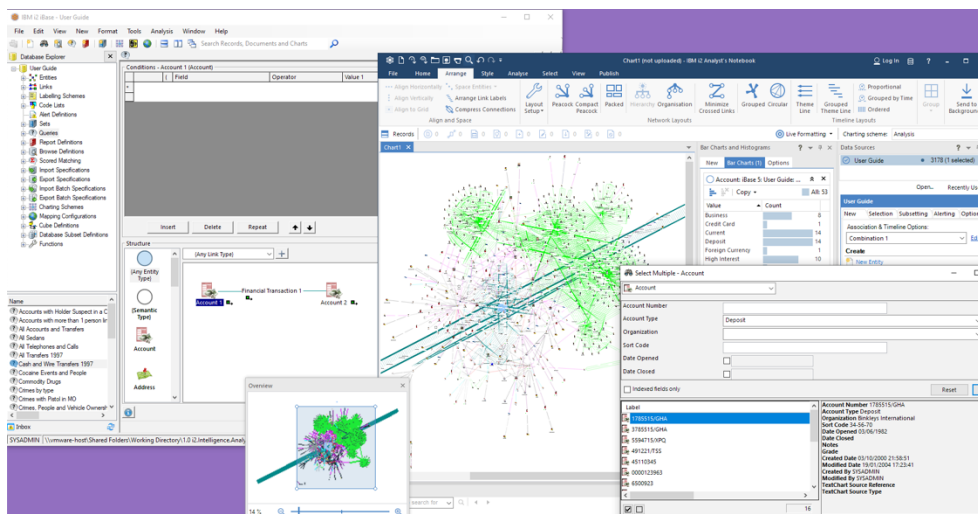
- A modernized and updated code base to ensure i2 iBase is ready for the most demanding operating environments
- A refreshed user experience that features upgraded dialogs, improved workflows, and numerous new capabilities, such as advanced subsets, merge links, better data entry, new field level options, composite indexes, and more
- Improvements to security both in the updated code base and with new features, such as the enhanced integration with Active Directory, to make version 9.0 the most secure and most sharable i2 iBase release to date
- For system administrators, installation improvements with a new all-language installer
- Response time performance improvements that allow users to log in and perform their tasks with the responsiveness expected from a modern intelligence application

IBM Security iBase 9.0 key features

With version 9.0, i2 iBase has evolved to use a new code base and includes numerous new features resulting in a safer, faster, more secure, and more useable product. It continues to tightly integrate with IBM Security i2 Analyst's Notebook as our i2 workgroup solution.

For the analyst, version 9.0 provides major performance improvements, together with a vastly improved everyday user experience in terms of faster connection and opening times, query response time, and improved security.

For system administrators, i2 iBase 9.0 introduces a single all-language installer for easier deployment along with numerous security improvements and design features to deliver a more modern deployment that meets the latest compliance and data sharing requirements.



i2 iBase v9.0 continues to tightly integrate with i2 Analyst's Notebook

New Features

An advanced subsets feature for improved collaboration

- The number of records that can be contained in a subset is increased from 50,000 to 5,000,000.
- Subsets can be manually or automatically synchronized.
- The search 360 feature can be used to search subsets.
- i2 iBase master database security can be applied to subset databases.
- Conflict resolution is improved.
- Automated synchronization tools can be used to manage updates between master and subset databases.

The ability to use search 360 faceting results to point to exactly where in a record the search term occurs.

The addition of auditing, alerting, and advanced subsetting capabilities to the i2 Analyst's Notebook to i2 iBase plugin task pane

- New field-level options to apply security, grade, or attachments to a file
- Improved behavior of the pick lists feature
- Auditing enhancements:

- Create audit log journal entries
- Enhanced ability to view records in the audit viewer
- Control who can archive audit logs
- Filter audit results based on the contents of a set
- Use the audit viewer to open i2 iBase audit log archives
- Improved audit use through the saving and re-use of audit queries

The ability to revert records to earlier versions.

In addition to the merge entities feature, the ability to merge links.

Improvements to data entry

- Datasheets are faster than in previous releases and can be resized.
- The PNG and TIFF image formats are now supported.
- Images now resize appropriately to the window.
- Data entry memos can now be up to one million characters.
- A spellchecker is added to check entity and link data records.

Support for the latest Federal Information Processing Standards (FIPS 140-2).

Improvements to the find feature dialog to make it easier to create links

- Improved form reset capability
- Easier record and query creation

The ability to build composite indexes for faster importing.

Easier switching between i2 iBase databases.

Upgraded Active Directory (AD) integration to enable authentication from domains in the same tree and from other trusted domains, enhancing collaboration across the enterprise.

The ability to customize terminology to fit the user's workflow.

Support for Microsoft SQL Server 2017 and Microsoft SQL Server 2019.

Note: Effective with version 9.0.0, i2 iBase no longer includes the iBase Cyber IP DNS Resolution plug in or integration with IBM i2 Text Chart.

Summary

i2 iBase provides a powerful workgroup solution for configuring, capturing, controlling, analyzing, and displaying complex information and relationships in link and entity data. i2 iBase is both a database application and a modelling and analysis tool.