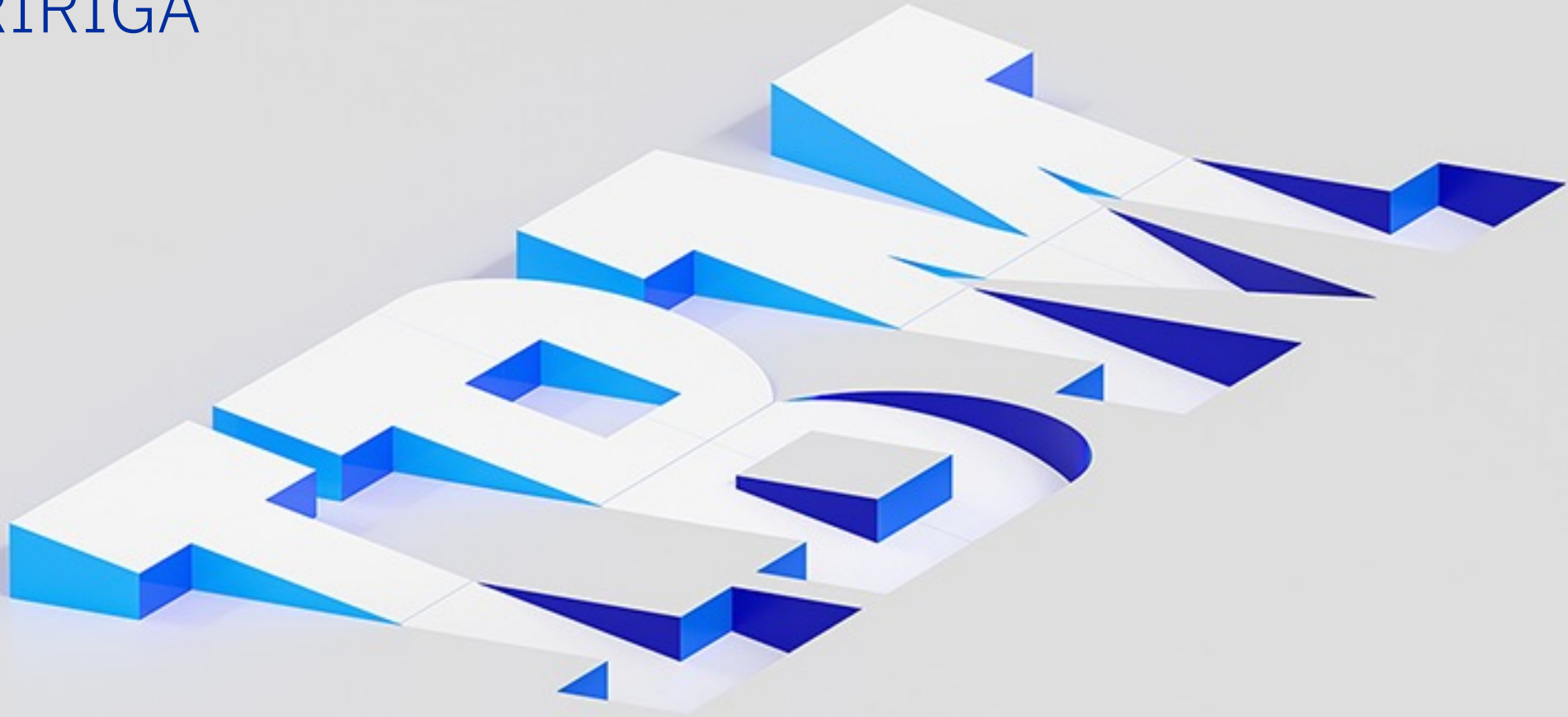
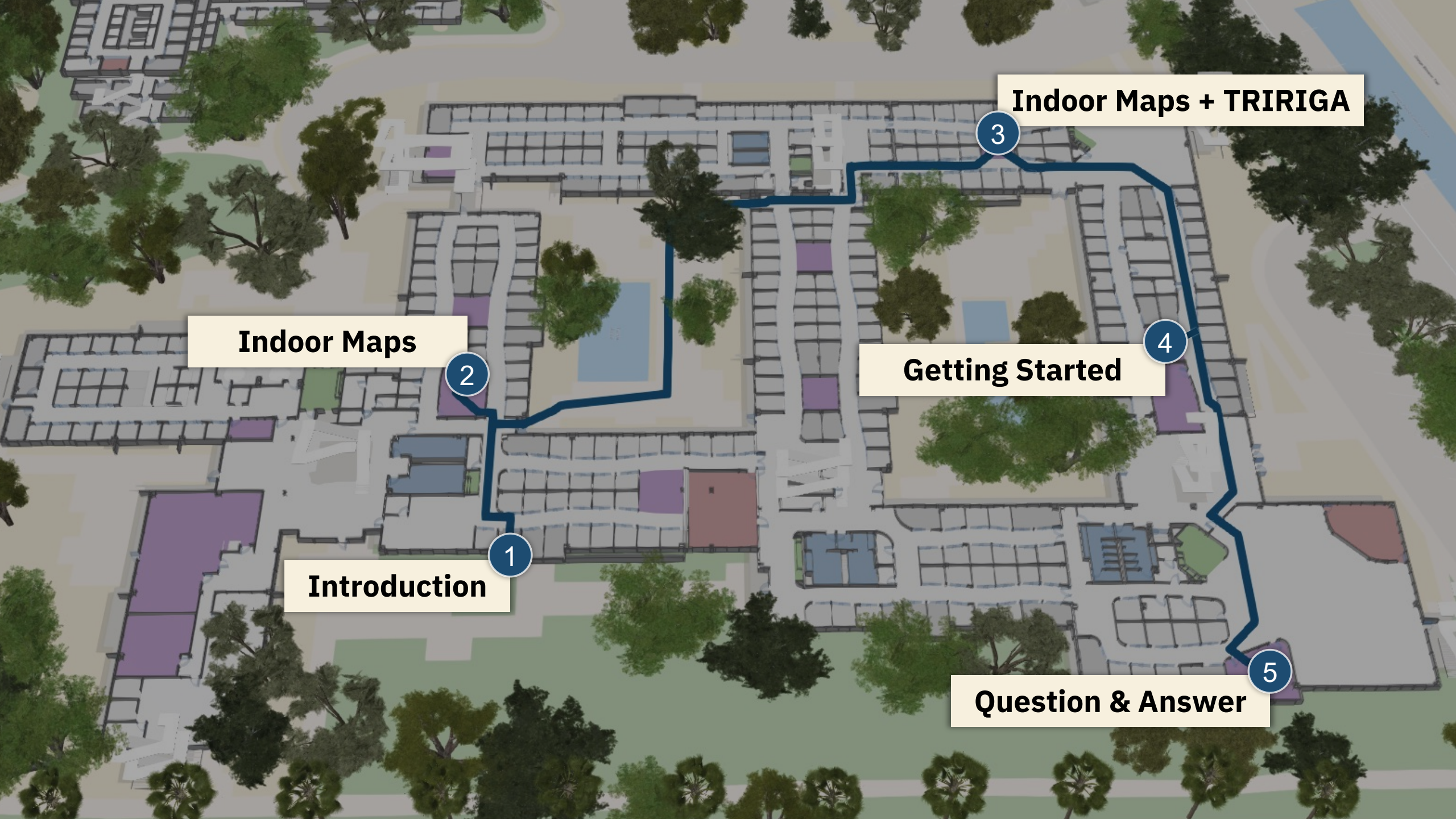


TRIRIGA Tuesday

Interactive Wayfinding with IBM TRIRIGA





Indoor Maps + TRIRIGA

3

Indoor Maps

2

Getting Started

4

Introduction

1

Question & Answer

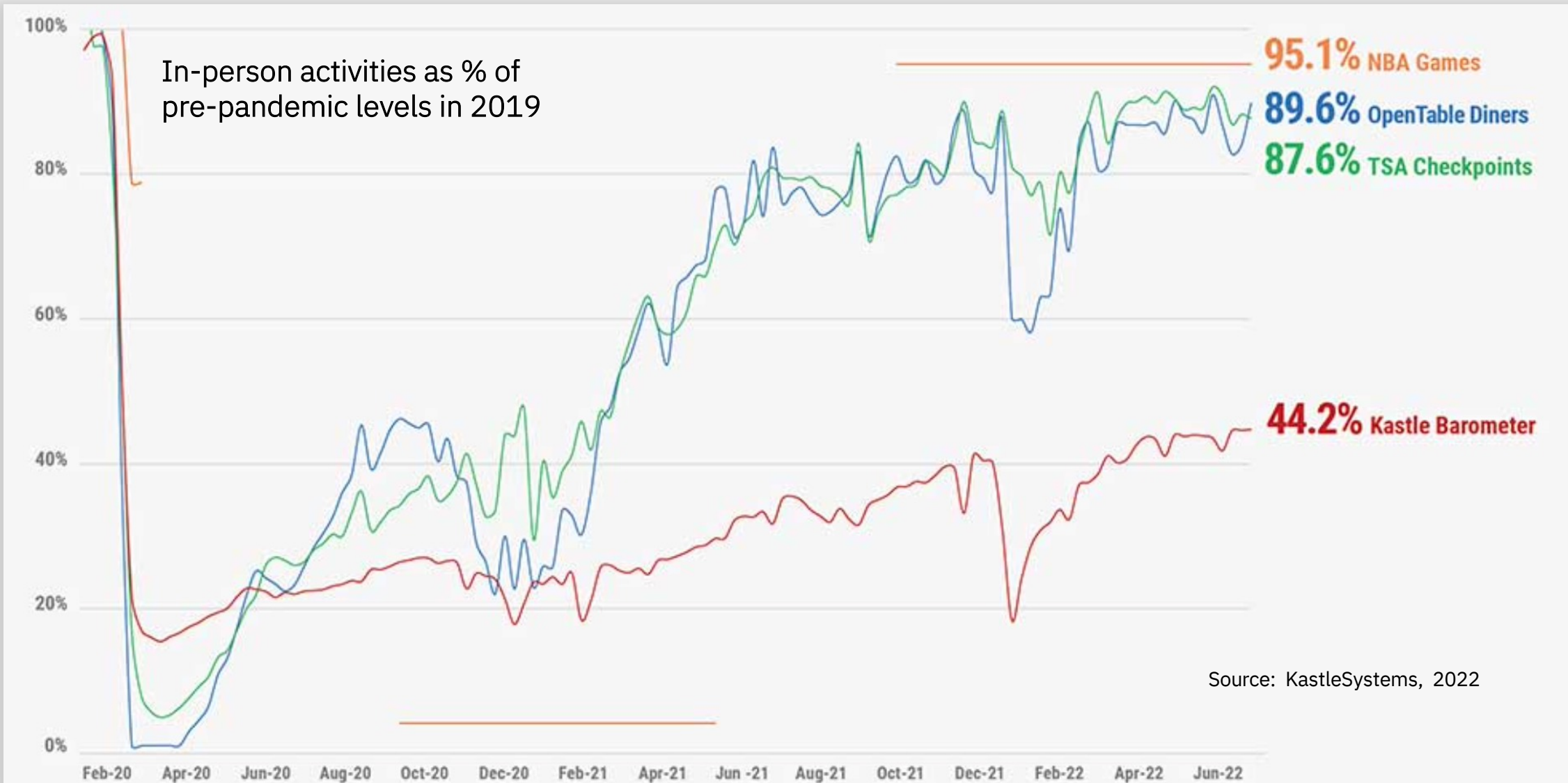
5



“...we are basically an indoor species.”

- WR OTT

While the “new normal” is apparent,
office occupancy lags considerably



Workforce needs have become a leading issue for executives to navigate

Enterprises are faced with the need to [attract and retain talent](#) as...

45%

of employees are looking to make a change, with the “[way they work](#)” being a leading cause of dissatisfaction

Source: Gallup, 2021.

Executives [want people in the office](#) as much as possible, as only...

12%

believe productivity is as high through remote work models

Source: Savills Research, 2021.

But...

80%

of [employees want flexibility](#) in how they work

Source: Slack Future Forum Survey, 2022.

...Enterprises recognize that improvements in [facilities, space, and services](#) boost employee engagement and help with retention

Indoor mapping is increasingly becoming an expectation of the modern flexible workplace

Facility Managers need strategic, administrative and oversight capabilities to manage and tune how space is to be used efficiently

Space Users expect to access facilities and space seamlessly, to add productivity to their day rather than impeding work tasks



Strategic

- Get more value from floor plan data
- Leverage automation and best of breed software
- Configurable workflows, maps, and routes



Configurable

- Visualize entire buildings and campuses inside and out in 2D and 3D
- Identify important points of interest on the map
- Define safe and accessible routes for users



Daily Usage

- Indoor maps and wayfinding
- Easily locate important spaces and points of interest
- Responsive designs for mobile, desktop and Kiosks



Elevated Experience

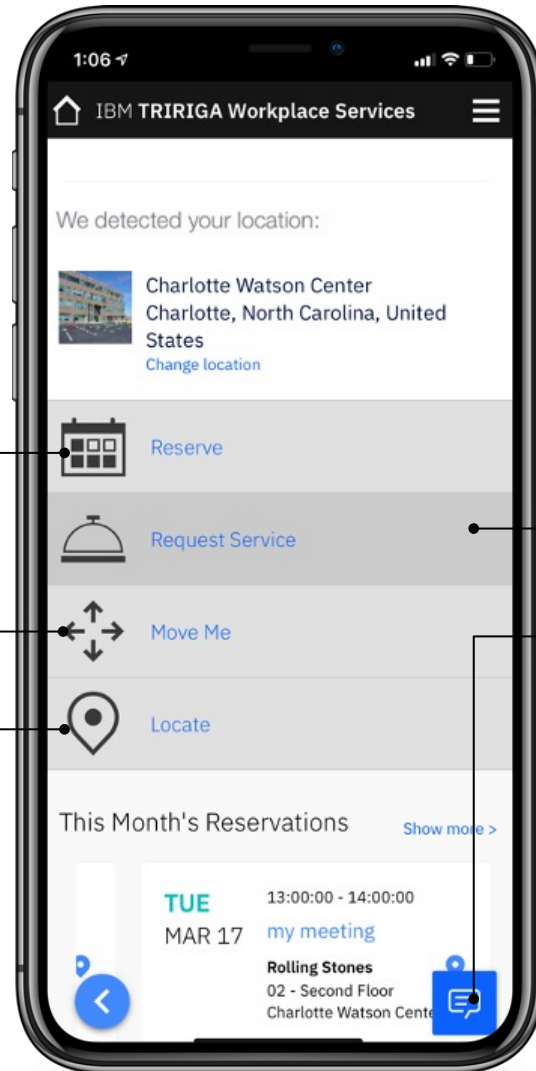
- Enhance employee experience with capabilities to help them understand the workplace and the available services more intuitively

The workforce needs a **single solution** for daily space management needs

Reserve app enables employees to reserve individual work and team meeting space

Move Me app allows employees to self-select their assigned work location

Locate app enables users to find colleagues and rooms that can be **enhanced with Indoor Maps**



Service Request app enables easy work request submission

AI Assistant enables employees to access services faster through chat

Desktop / Tablet designs for the portal and apps provide a **responsive design** for power users on larger screens

IBM TRIRIGA Indoor Maps

TRIRIGA Indoor Maps provides wayfinding capabilities for employees, service technicians & visitors

- Interactive maps allow users to search for rooms, spaces & people (based on allocation/reservation)
- Wayfind & navigate as user moves throughout building
- Travel modes allow users to choose walking or accessibility mode
- Points of interests allow user to identify areas of interest such as the canteen, restroom etc.

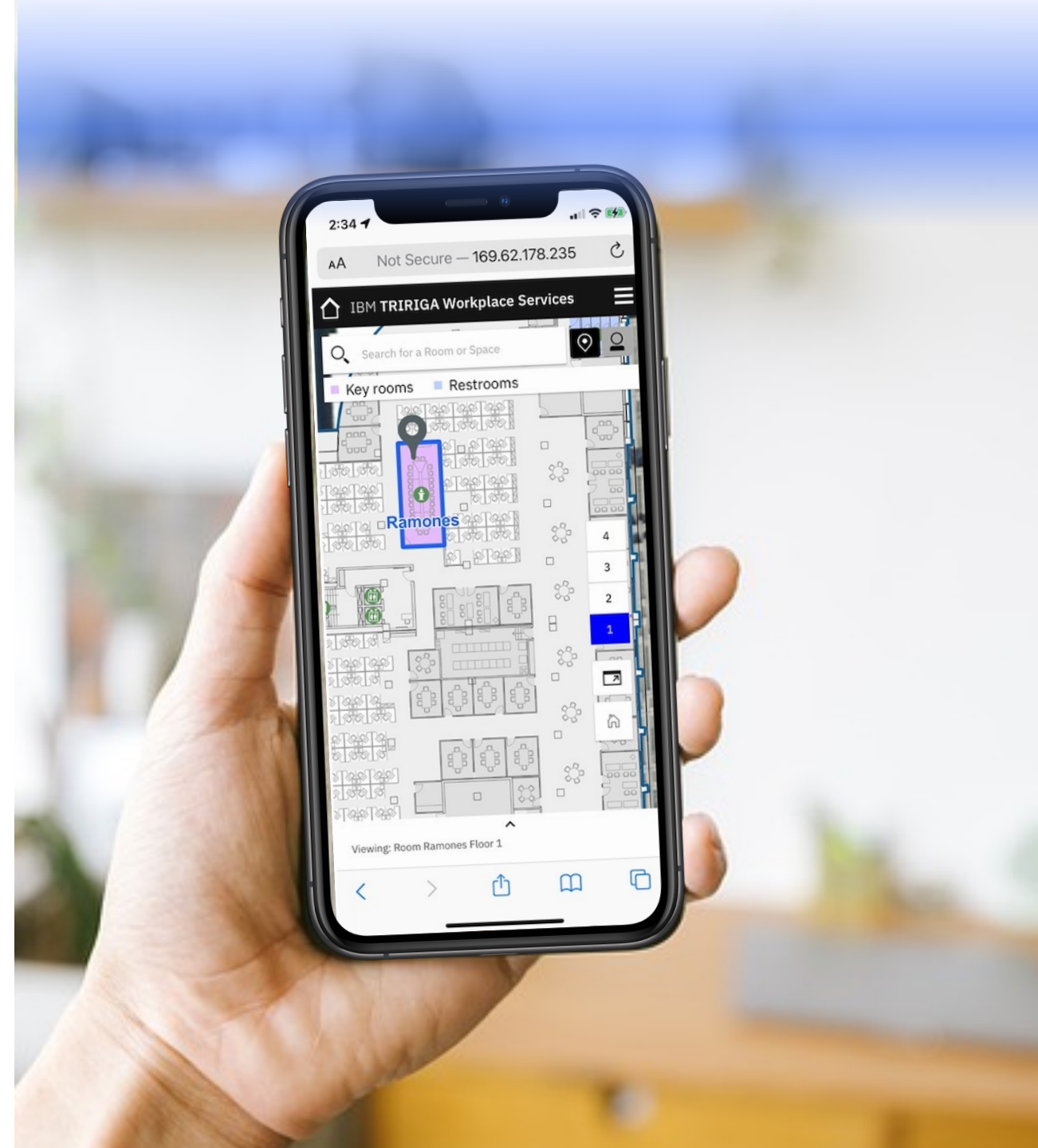
Powered by Esri ArcGIS Indoors, a set of tools and services turn your static floorplans into interactive maps

Responsive designs support mobile, desktop & kiosk modes



Navigation and Wayfinding for employees & service technicians **on the go**

- Users quickly orient themselves, find what they are looking for and plan their route
- Mobile allows user to navigate as they move throughout the building or campus
- Creates efficiency as fastest routes are suggested
- Improves workplace experience by providing tools that allow users to be productive



Interactive maps for building users & visitors

- Kiosk mode allows for starting point to be pre-defined
- Users can identify where they are in the building right now
- Generally placed at entrance to building and on each floor
- Always on display, with no log in allowing all building users to interact
- Reduces confusion for visitors

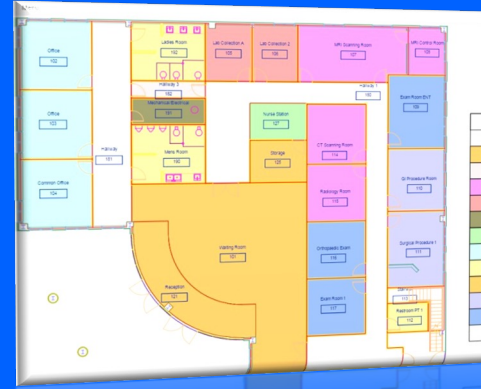


Integrated Solution Architecture

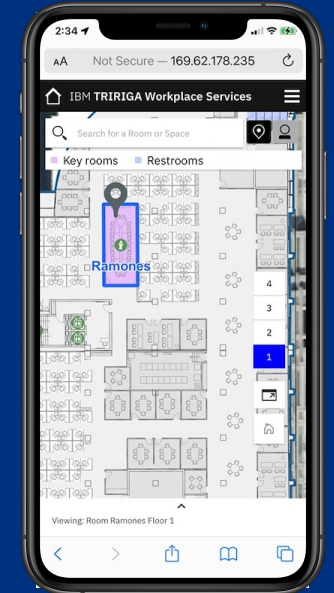
Floorplans in
CAD or BIM



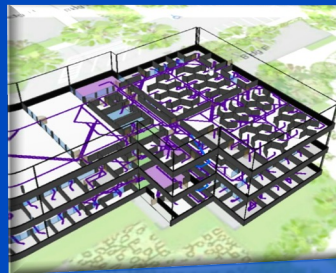
Space Data in TRIRGA



Indoor Map in
TRIRGA Apps

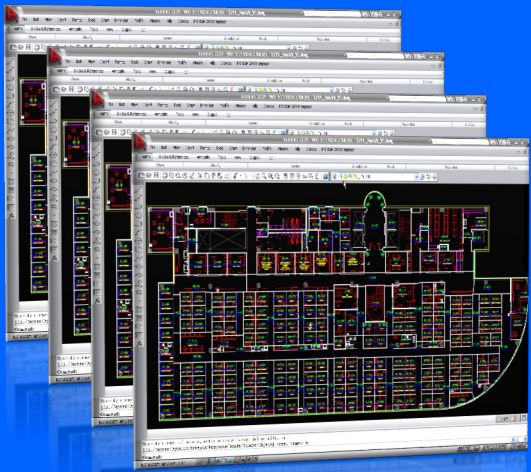


Geospatial Model in
Esri ArcGIS Indoors



Floorplans

Floor plans are defined using CAD drawings or BIM models. They are the basis of space data in TRIRIGA and the indoor maps.



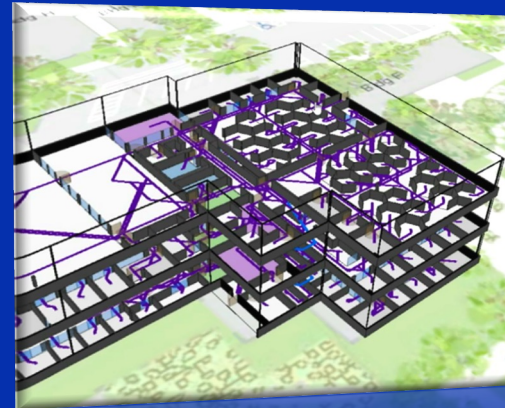
Space Data

TRIRIGA ingests building and floor plan data and creates space hierarchy model of the entire facility



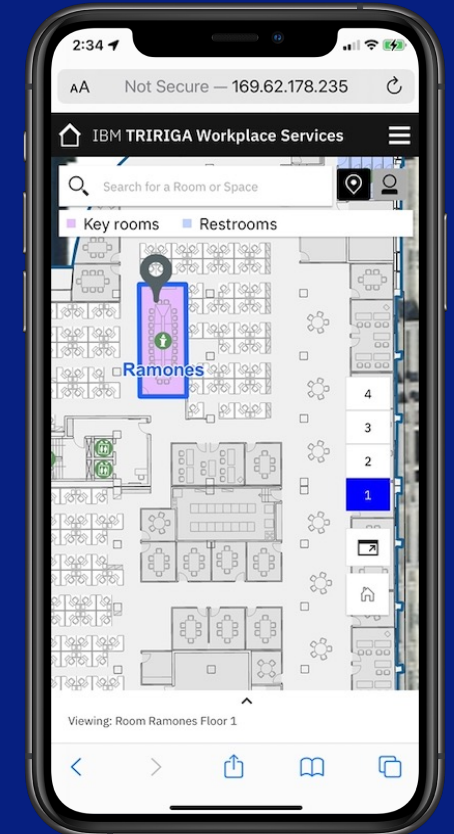
Geospatial Model

ArcGIS Indoors produces a geospatial model and routing pathways across the entire facility or campus. ArcGIS Indoors has 2 components that work together ArcGIS Pro and ArcGIS enterprise.



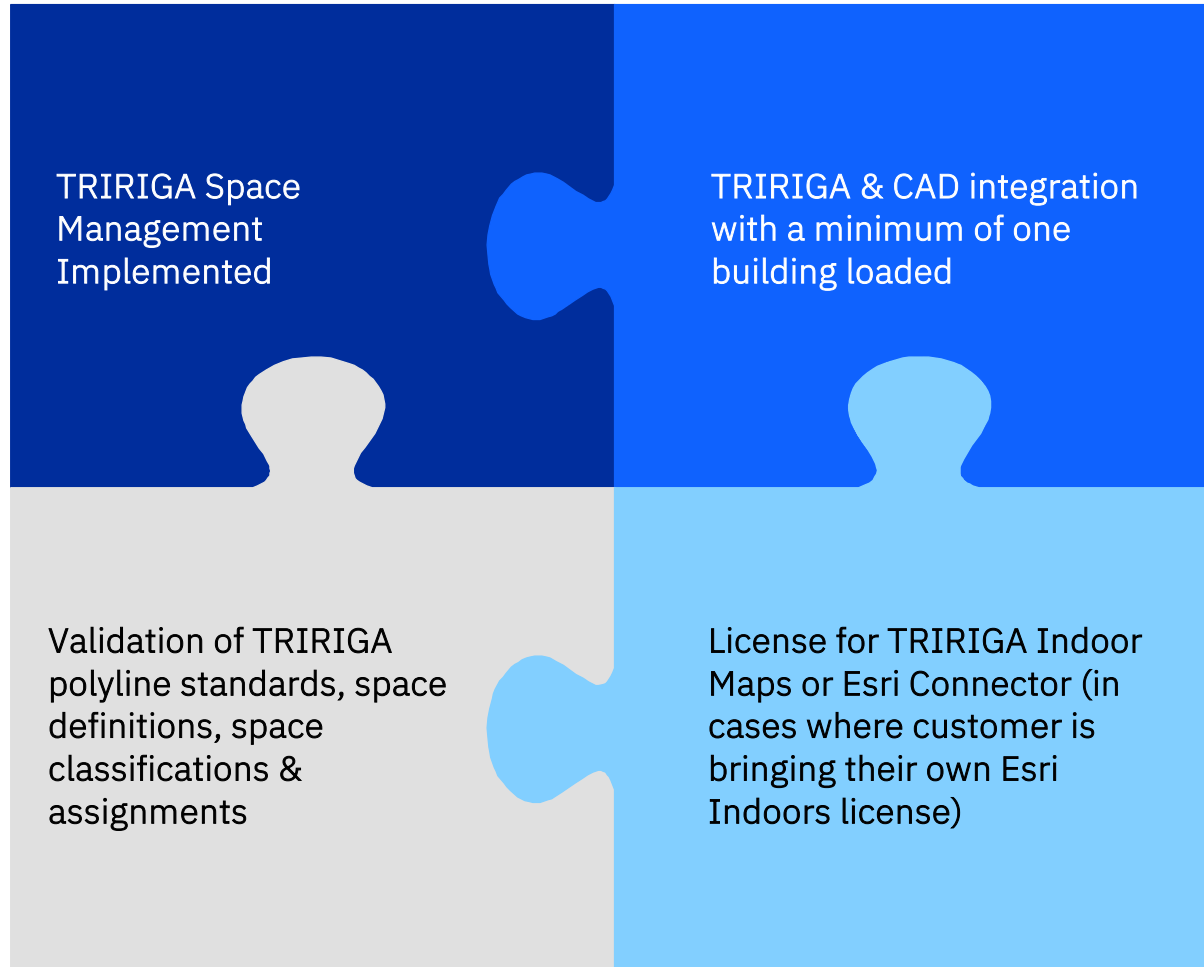
Indoor Map

Connector for Esri ArcGIS Indoors enables interactive maps and wayfinding within TRIRIGA perceptive apps.



Pre-Requisites for Getting Started with TRIRIGA Indoor Maps

These steps highlight requirements and validations to be completed to start deploying Indoor Maps



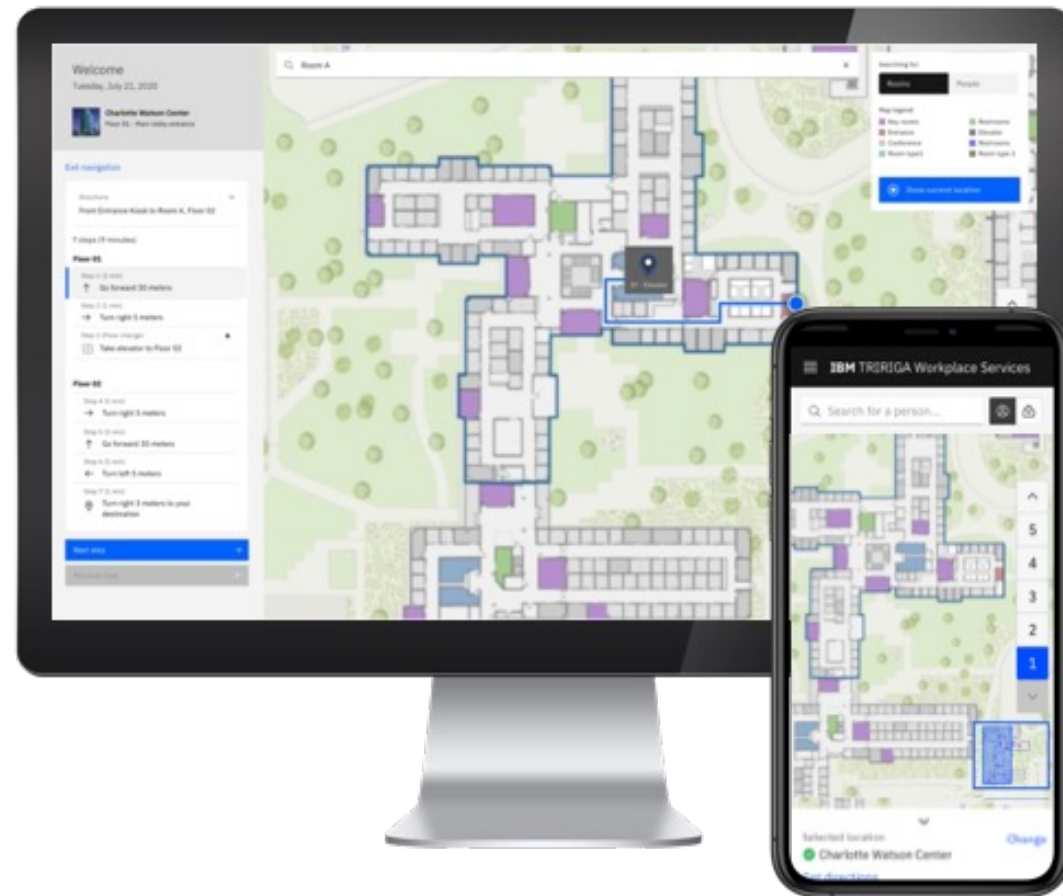
Implementing TRIRIGA Indoor Maps

Start with a pilot & replicate at scale

- 1 building
- Up to 7 floors
- 3 months duration
- 1 month:
 - Set-up, configuration & testing
- Month 2 & 3:
 - Validate & production strategy



Demo



Thank you

Questions & Answer

