

MRO Inventory Optimization to Unleash Captive Capital

MRO Inventory Optimization

Scope

MRO = Maintenance, Repair and Operations

MRO Inventories are kept along the value chain to ensure up-time of all equipment / production machinery and typically comprise \$20+ Million

Mission Statement

MRO Inventory Optimization focus asset-intensive companies to help reduce costs and eliminate waste via advanced prescriptive analytics and value services

IBM MRO Inventory Optimization

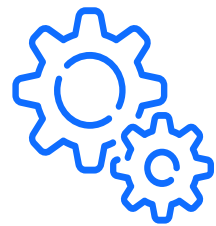
We optimize inventories for asset intensive companies, like these,
across the world



The Challenge of MRO Inventory Optimization in Asset-Intensive Industries

With 100K-2M+ MRO spare parts to manage, and 20+ variables to consider for every part, companies typically have only two minutes per year to manage each part*

- Book value?
- Replacement value?
- Repair price?
- Pack sizes?
- Variable usage?
- Mean Time Between Failure?
- Variable sizes?
- Set sizes?
- Planned/unplanned downtime?
- Lead times?
- Lead time variability?
- Ability to expedite?
- Alternate suppliers?
- Internal lead time?
- Criticality/business impact?
- Equipment linkage (BOM)?
- Work-around options?
- Stock out costs?



**X 2M+
spares!**



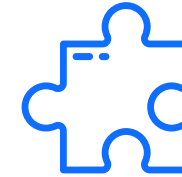
The Costs of Poor Inventory Management to Operations and Revenue



Bloated Inventory



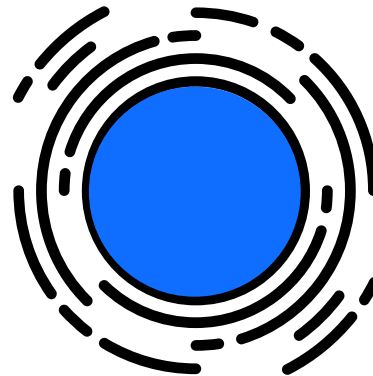
Equipment Downtime



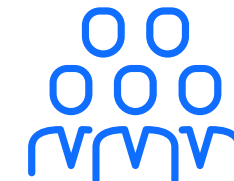
Parts Become
Obsolete on Shelf



Endless spend on inventory
reduction projects



**End result: A margin sinkhole and inventory
on balance sheet growing 2-10% per year***



Bloated headcount

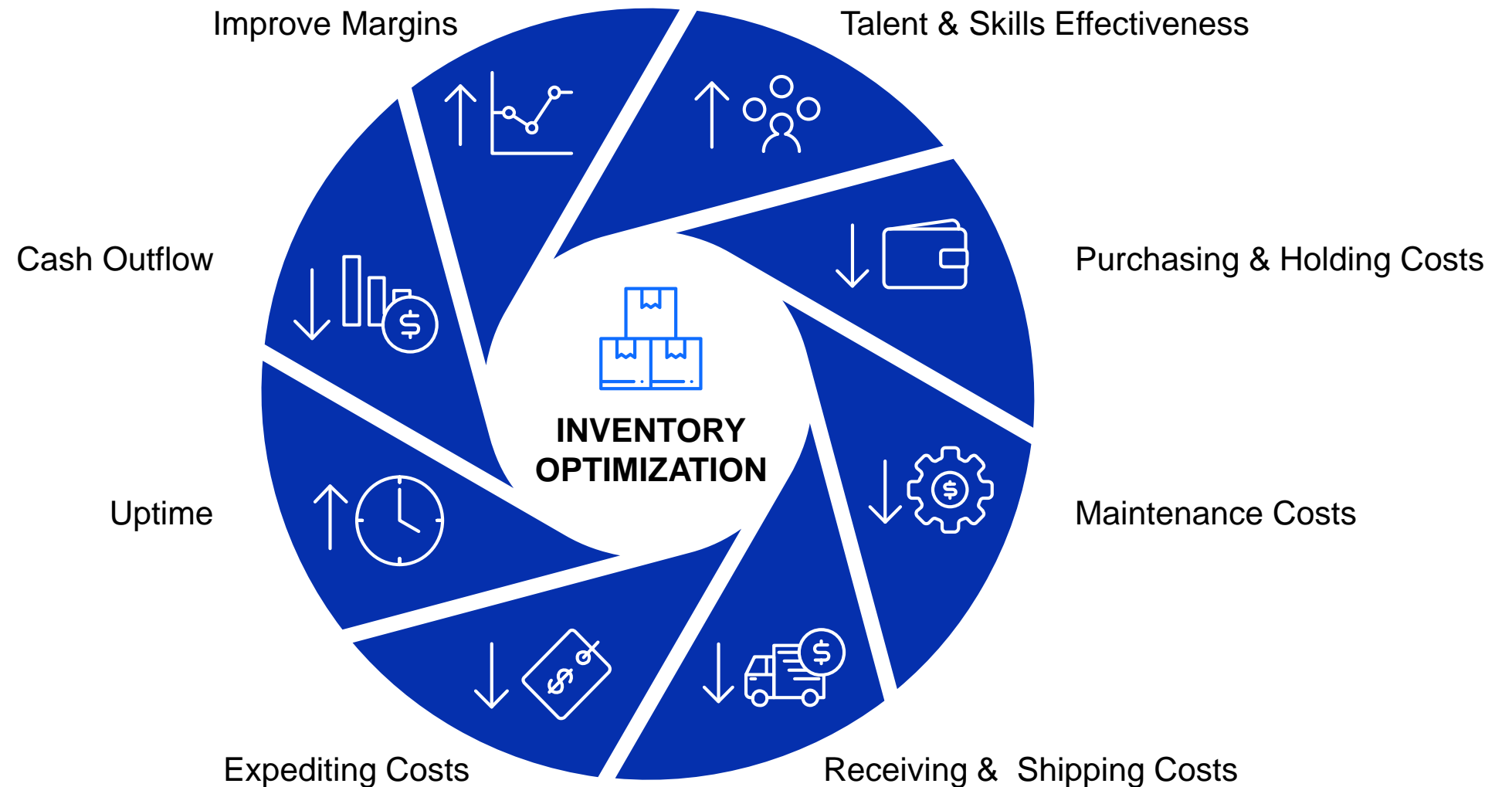
The Impacts of IBM® MRO Inventory Optimization



Addressing key operational challenges

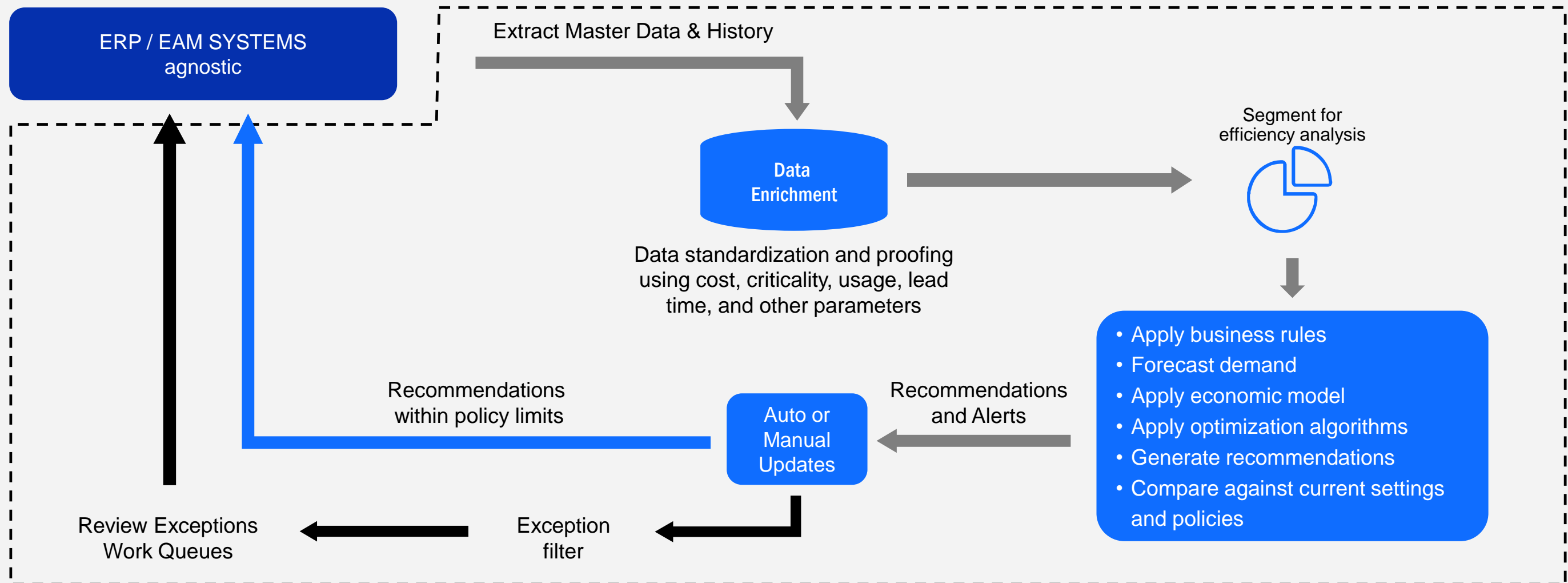


Delivering rapid payback to fund broader transformational operations initiatives



How IBM® MRO Inventory Optimization Works

Automated and Continuous, with priority work lists



Proactive not Reactive

Not just Data, but rather what you can do with it!

Prescriptive Analytics

Priority work lists

Criticality based logic and decisions

RISK MITIGATION

UNPLANNED – HIGH RISK



FIRE MANAGEMENT – Planned & Lower Risk



Still Hard Work, It's not a Silver bullet



IBM® MRO Inventory Optimization Sample Feature Set



SERVICE LEVEL ANALYSIS

Optimize service levels using business impact codes to help maximize uptime



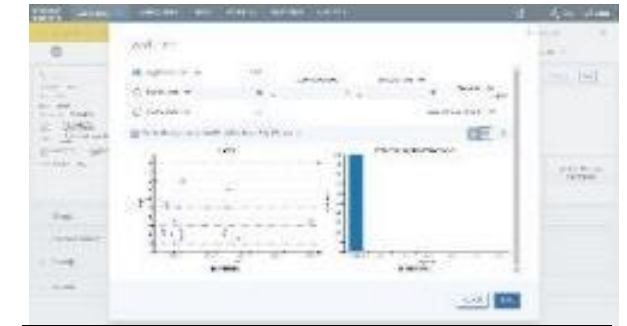
INVENTORY OPTIMIZATION

Automated, analytics-based approach to aligning safety stock with business impact



CRITICALITY ANALYSIS

Minimize risk of overstocking consumables or stocking out of critical spares



LEAD TIME ANALYSIS

Determine actual lead times and drive improvements to help reduce cost and downtime



QUICK REPORTS

Rapidly generate and display reports and KPIs across all your key metrics



BASELINE ANALYSIS

Analyze inventory value-based
On average price, inherited items and other criteria



DEMAND FORECASTING

Minimize risk of overstocking consumables or stocking out critical spares



WHAT IF ANALYSIS

Change the game with flexible What-If capabilities. Test different circumstances, and find your business 'sweet spot'

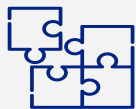






MRO Inventory Optimization

Provides *continuous*, sustainable, consistent optimization by combining:

- + **Client Data** (Items, Equipment, Suppliers, BOMs, Issues, Receipts, Work Orders)
- + **IBM Prescriptive Analytics & Algorithms**
- + **Client-Based Logic Configuration**

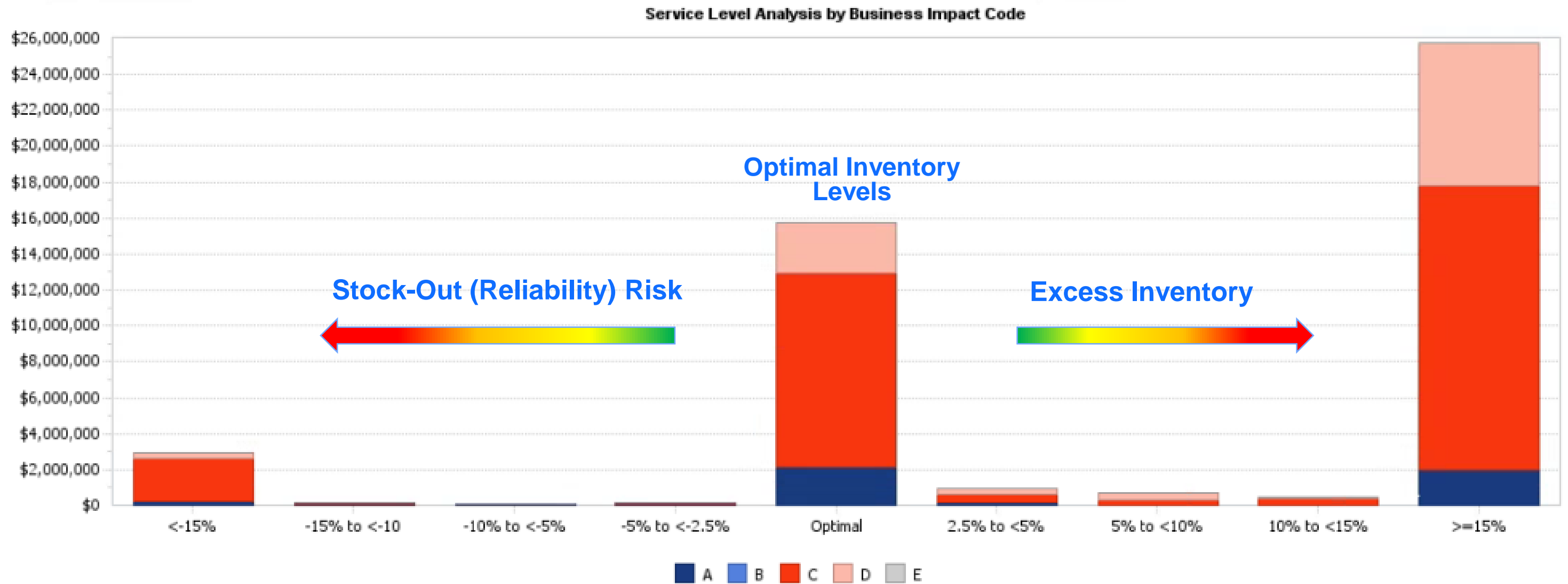


Uniquely packaged in one solution to improve spares availability, **increase equipment uptime and reduce costs**

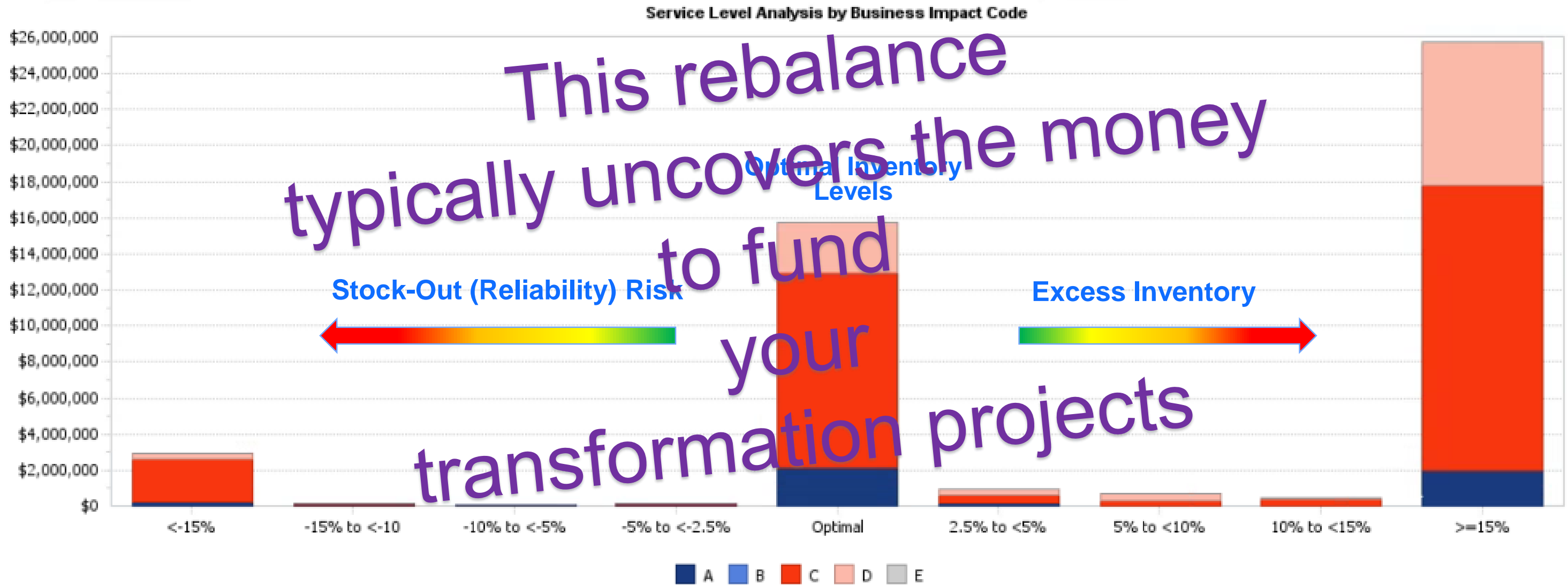
 Data Enrichment	 Item Characteristics	 Demand Forecasting	 Availability/Lead Time	 Item Criticality	 Risk-Based Cost Model	 Workload Prioritization/Efficiency
Lead Time	Automated Segmentation	Historical Demand	Internal PR-to-PO	5 Levels of Business Impact	Stockout Risk	Prioritized Work Queues
Criticality	Movement Stratification	Planned Demand	Weighted Average PO-to-Receipt	Equipment Linkage	Holding Cost	Item-Level Scoring
Potential Duplicates	Bin Constraints	14 Forecasting Methods	Receipt-to-Put Away	Material Type & Class	Expediting Cost	Work Flows
Average Issue Size	Set/Pack Size	Forecast Scoring/Selection	Outlier Clipping	Supplier	Replenishment/PO Line Cost	Fully Automated Recommendation Process
Data Anomaly Alerts	Average Issue Size	Historical & Future Durations	Variance Factoring	Cost	Economic Order Quantity	Excel Import / Export
Missing Data Alerts	Shelf Life	Automated Clipping	Supplier Performance	Description	Safety Stock	On-Line Grid Format Drill Down
Where-Used Issues/BOMs		Forecast Factoring	What-If Overrides	Availability		User-Specific Filters and Views



Inventory Service Level Visibility



Inventory Service Level Visibility



A practical example from IBM MRO Inventory Optimization

IBM MRO IO analyses the historical and expected consumption and optimizes all inventory and replenishment parameters ... and continuously updates these!

Detailed result from IBM MRO Inventory Optimization for one material in Plant A

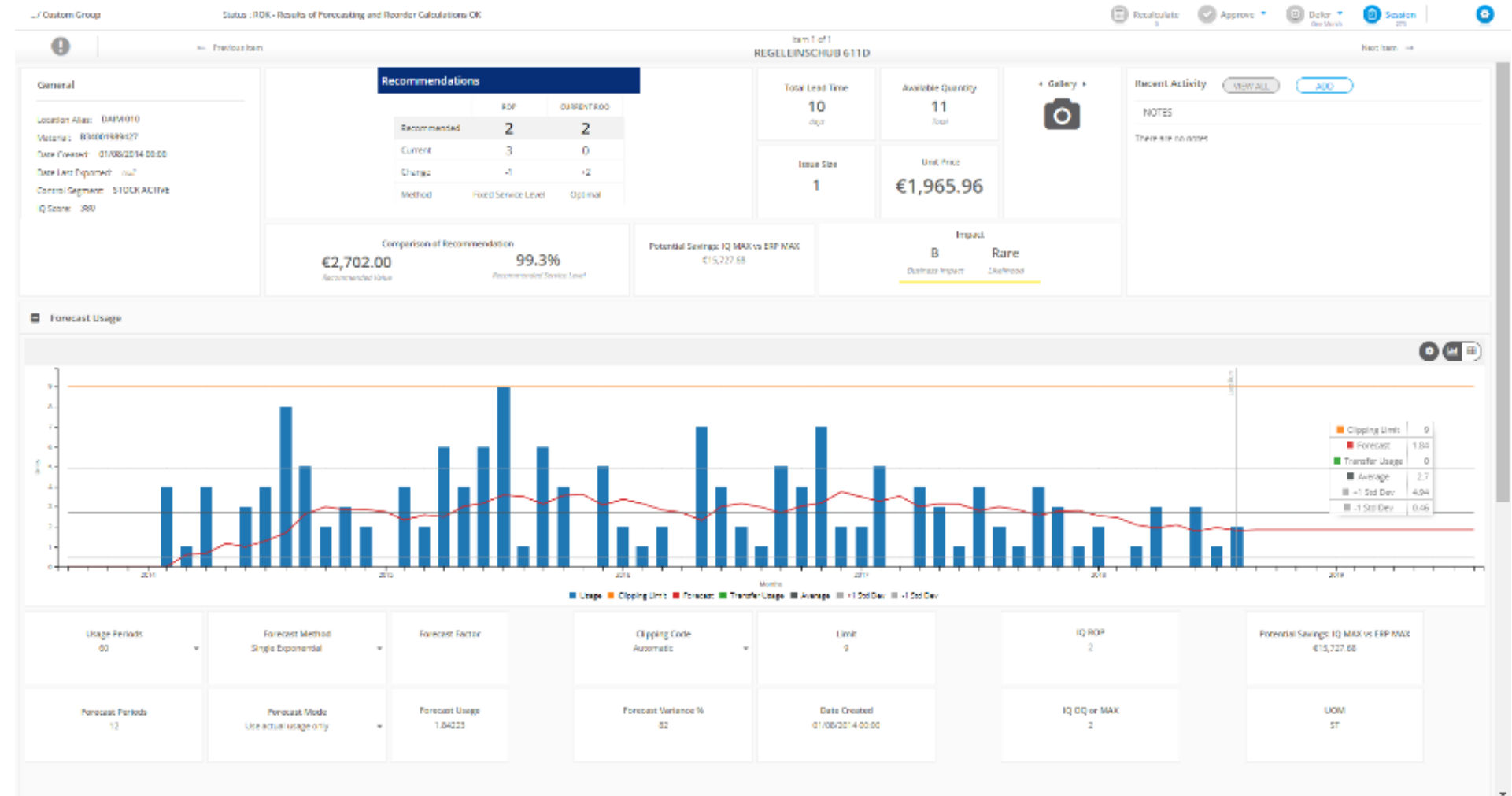
Material Data:

Material Number: FC494059673
Unit Price: 1.965,96 €
Current Stock Level: 11 Pieces
SAP stated replenishment Time: 14 Days

IBM MRO Inventory Optimization result:

Demand forecast: 1,84 / Month
Maximum Stock Level: 3
Reorder Point (Order if below): 2
Order Quantity: 2
Safety Stock Level: 1
Calculated Average Lead Time: 7 Days
Adjusted Replenishment Time: 10 Days

Savings Potential: 8 Pieces
15.728 €



IBM® MRO Inventory Optimization: Results Delivered

One of World's Largest Manufacturers of Aluminium

Inventory Rebalanced by

\$37M (33%)

In One Year

- \$23B in revenue
- Maintenance driven initiative to reduce inventory
- **\$23M net inventory reduction in first 12 months, including \$30M reduction in inventory with a \$7M inventory spend increase to minimize downtime**
- Additional \$5M in repairable costs avoided
- Optimized levels for all inventory segments

Major Global Miner

Inventory Reduced By

\$52M (71%)

Over Six Years

- Operating 7 mine sites, 1 terminal
- **MRO inventory value decreased from \$73M to \$21M over 6-year period**
- Sustained 50% year-over-year reduction in MRO inventory spend for 6 years running
- No attributed production loss
- No negative impact on reliability

Large Utility

Net Spend Avoidance of

\$77M

In Inventory Costs

- Inventory value growing at 10% annually
- Reduced 10% inventory growth rate (\$13 million a year) to 0% growth
- \$12.5 million reduction in inventory first 12 months
- Net spend avoidance in MRO inventory of \$77M
- **Net inventory rebalance by \$33M, \$18M reduction after \$15M new stock spend**
- No negative impact on reliability

One of World's Largest O&G Companies

Inventory Costs Reduced by

10%

In Six Months

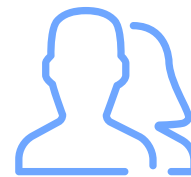
- Reduced MRO working capital by 10% in six months at one site alone
- Lowered inventory levels by at least 10% three years in a row
- Achieved 10's of \$millions in savings
- **Savings at Alaska site funded global implementation in year 1**

Implementation Methodology & Effort

Your Data data + Your business logic + IBM® MRO Inventory Optimization



Estimated time to implement:
3-6 months



Primary resource (personnel) requirements: **supply chain and operations SME's, during the Design Workshop and Design Review phases (approximately 3-5 days each).**

Establish (1 month)



Project Definition & Planning



Initial Data Extract & Validation



Design Workshop



Configure & Test IQ Inventory



Design Review & User Acceptance



Training, Go-Live & Support



Ongoing Benefits Realization

Implement & Improve (2 to 3 months)

Realize & Sustain (on-going)

Rapid time-to-benefits

IBM MRO Inventory Optimization



Sales APAC
IBM MRO Inventory Optimization
+1-720-717-4955 (Mobile)
greg.meszes@ibm.com