

IBM Center for Cloud Training



Webinar

IBM Cloud Site Reliability Engineer (SRE) Certification

September 28th, 2021



Agenda

You can use
the chat
window to ask
a question

- Introduction
- Discussions around the following topics

How has the role of SRE evolved?

What are the key topics for the IBM
Cloud SRE Certification?

How has the skills required for SRE
changed?

How can I prepare for the
Certification?

Expert Perspective



Kevin Yu

Principal SRE - Site Reliability, Incident & Problem Management, and SRE KPI



John Easton

Distinguished Engineer - Cloud Strategy & Business Development Engineering



Cale Cohee

SRE - AI Applications Platform

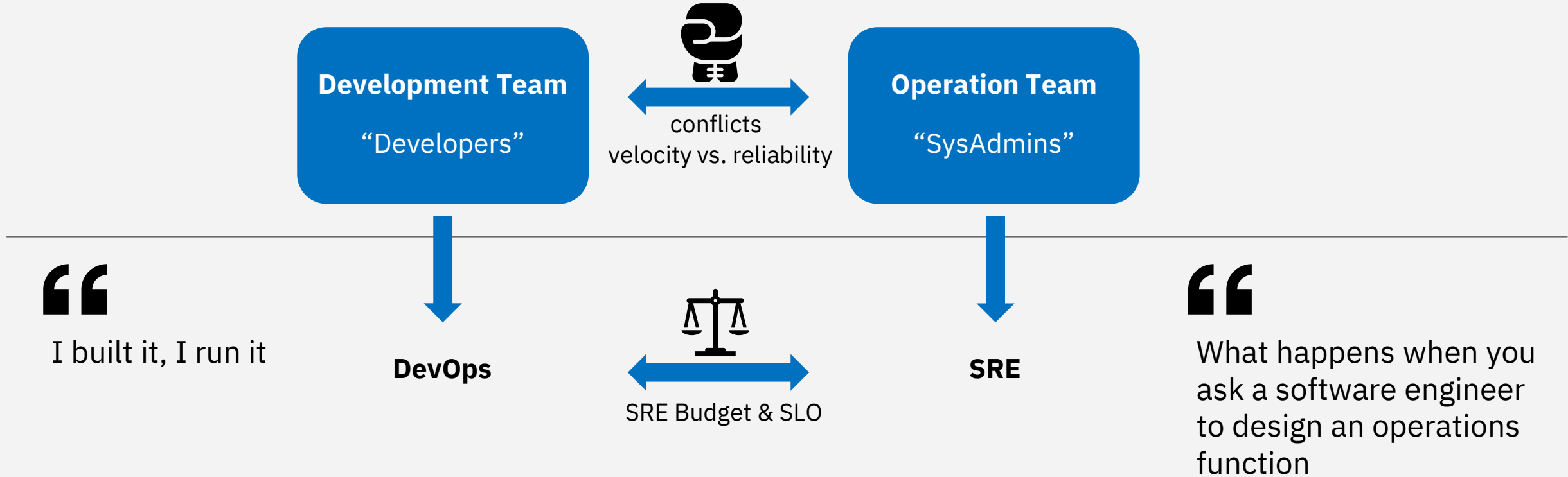
Anti-Pattern

- ✗ Saying buzz words like SRE won't naturally achieve outcomes
- ✗ SRE is not a one-time event



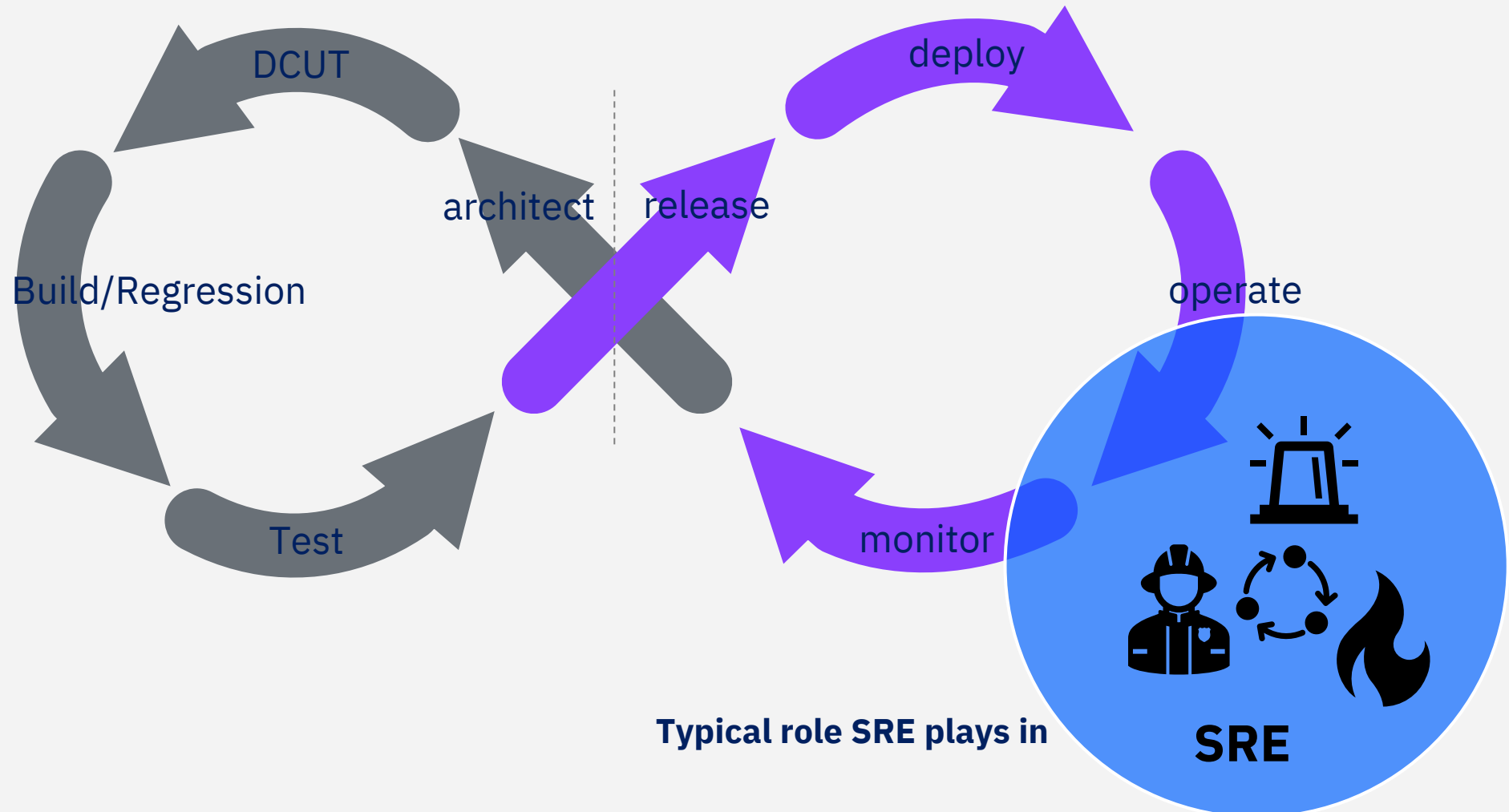
Evolving role of SRE

Typical view of “SRE”



Evolving role of SRE

Looking from lens of solution life cycle



Design-Pattern

- ☒ Support Site Reliability Engineers with prioritization and resources
- ☒ SRE discipline is applied in the entire life cycle

SRE Roles

Data Driven, KPI Focused
feature delivery



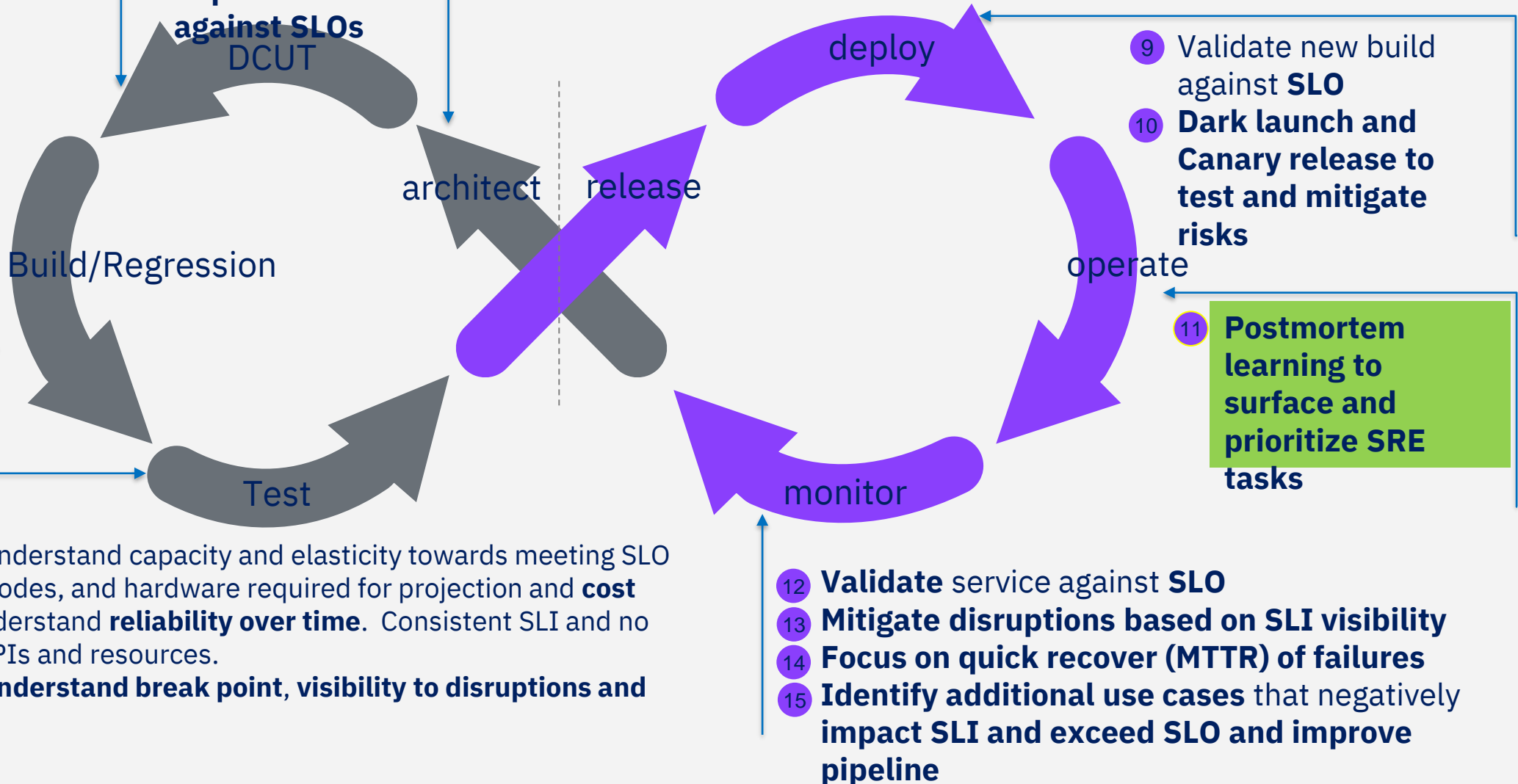
5 BVT **measure SLI / KPI** of new build vs. previous. Success within established SLOs.

- 6 Scalability test to understand capacity and elasticity towards meeting SLO approximate # of nodes, and hardware required for projection and **cost**
- 7 Duration test to understand **reliability over time**. Consistent SLI and no upward trending KPIs and resources.
- 8 Resiliency test to **understand break point, visibility to disruptions and recovery**

- 3 Instrument code
- 4 to **measure SLI and KPI**
- Early **PoC** and **validate implementation against SLOs**

start here and iterate

- 1 **Understand user commitments / SLA, Empathy Mapping**
- 2 Formulate **measurable SLI and SLO** meet commitments



The Tenets of SRE

tenet noun

Reference copied from : <https://www.merriam-webster.com/dictionary/tenet>



te-net | \ 'te-net also 'tē-net

Definition of *tenet*

: a principle, belief, or doctrine generally held to be true

especially : one held in common by members of an organization, movement, or profession

Capture approaches to modernizing **"the way we work"** as we implement and provide services to our clients in a hybrid multi-cloud world.

Result in **tangible and identifiable outcomes.**

In Site Reliability Engineering these practices are often referred to as **"The Tenets of SRE."**

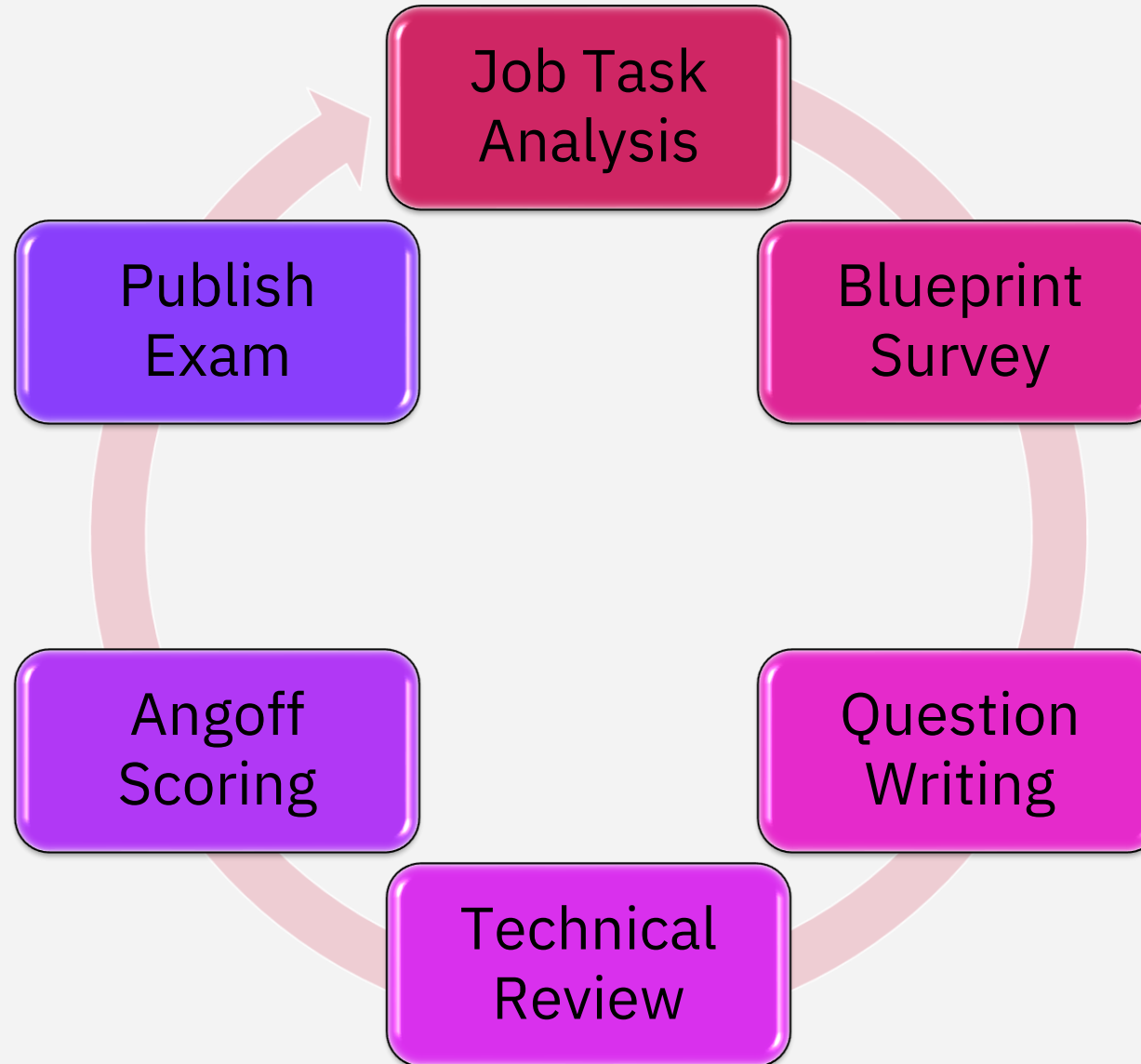
- + Scale Ops with Load
- + Cap Ops Load
- + Overflow Handling
- + Service Levels
- + Error Budget
- + Observability
- + Authority
- + Handle Enduser Alerts
- + Blameless Postmortems
- + Staffing Pool
- + Ops Readiness Review

What should you know about IBM Cloud SRE certification?

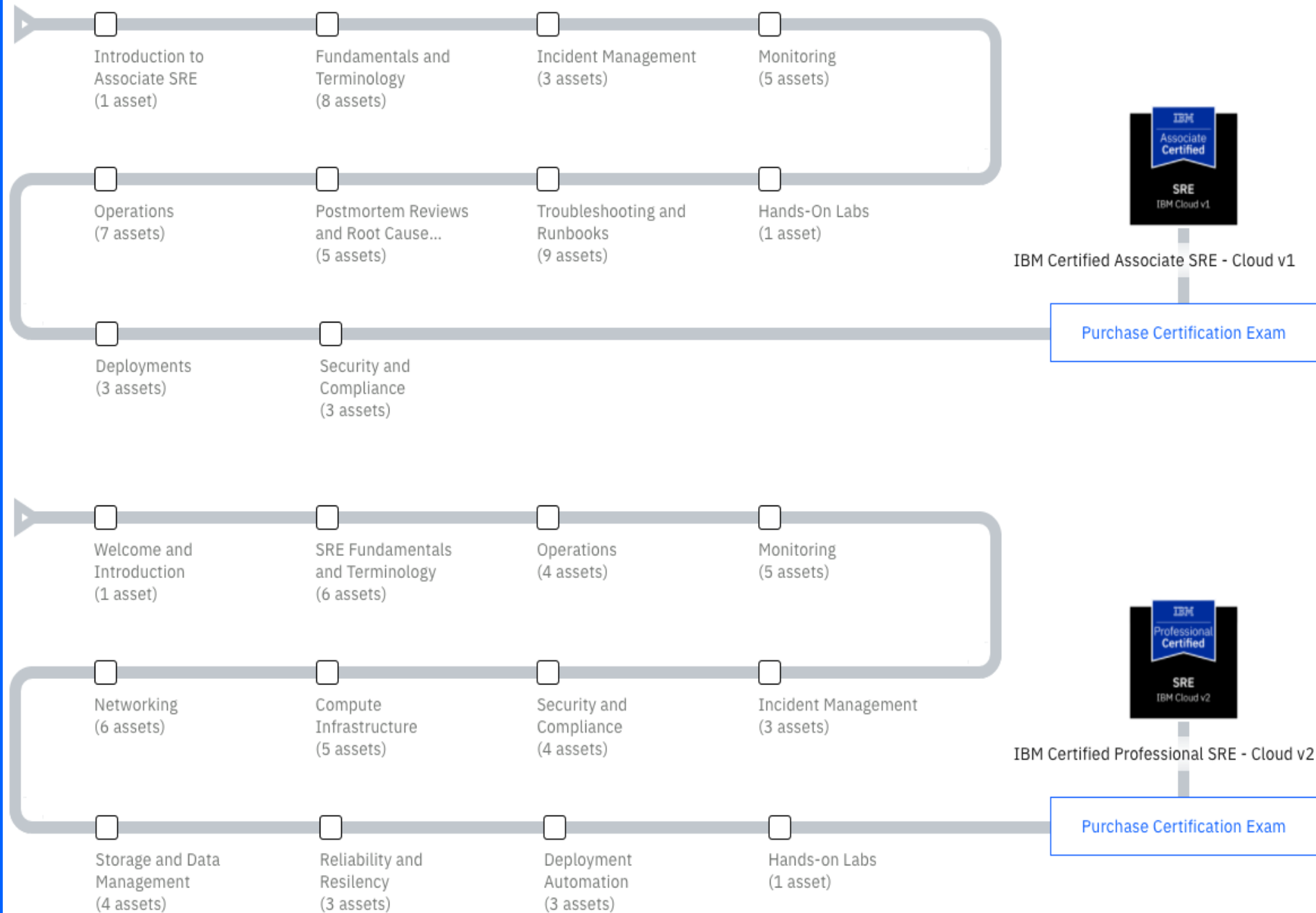
- **What is the process?**
- **What are the variations?**
- **What content are tested?**



Certification Process



Associate vs. Professional SRE comparison



Sources of IBM Cloud SRE education materials

IBM Garage Methodology

IBM Garage Methodology

Foundational to the IBM Garage is a unique methodology that curates industry best practices layered with a depth of experience only IBM can bring. The IBM Garage combined with the IBM Garage Methodology can drive unprecedented transformational change.

Log in

Overview

IBM Garage Methodology

IBM integrates practices that are grounded in experience—from implementation at global scale through culture change—into a single, seamless end-to-end approach: the IBM Garage Methodology. The Methodology drives Enterprise Design Thinking at scale, is built on agile principles for colocated and distributed teams, leverages DevOps tools and techniques for continued delivery and operations, fosters digital talent and culture change, and enables Site Reliability Engineering.

The Methodology describes how to start implementing the practices in your organization. Workflows describe a set of activities that you need to complete to realize an outcome. For example, a workflow that describes how to define a minimum viable product (MVP) describes activities and related practices to create an implementable MVP.

Home Architectures Courses Adoption

← Architecture Center

Cloud service management architecture

Plan, design, and implement cloud operations to monitor and manage your cloud platform and the applications that run in the cloud.

Email an expert

Overview

Reference diagram

Constituent architectures

Resources



IBM Cloud Service Management & Operations

Field Guide

IBM

IBM Cloud Professional SRE v2

C1000-119

IBM Cloud: Cloud Solutions

- Member login
- Register for an exam
- Certification Marketplace



Objectives	Exam Preparation
------------	------------------

Number of questions: 61	Time allowed: 90 mins
Number of questions to pass: 40	Status: Live


An IBM Cloud Site Reliability Engineer (SRE) is a person who operates services that sustain service level objectives and engineers scalable, secure, and highly reliable and resilient services. They do this by infusing automation, DevOps principles, proactive maintenance, rigorous troubleshooting, and more for workloads on IBM Cloud.

Prerequisite Knowledge:

Understanding of:

- System Thinking
- DevOps practices


Related Certifications



IBM Certified Professional SRE - Cloud v2

[View certificate here](#)

Sample Exam



The Sample Exam contains a subset of questions similar to those found on the actual exam.

1 Applying Site Reliability Engineering Principles **13%**

1. Manage the trade-off between Change, Velocity, and Reliability of the Service
2. Facilitate Blameless Postmortems
3. Identify Root Causes and Contributing Factors and Apply Software Engineering Principles Toward Mitigation
4. Negotiate Service Level Objective, Service Level Indicator, Error Budget
5. Apply Data-Driven, Scientific Approach to Fact-Finding
6. Design and Deploy Automation Strategies
7. Leverage IBM Cloud Tools and Technology Across the Software Development Life Cycle (SDLC)
8. Understand the roles and responsibilities for SRE effectiveness

2 Operations **11%**

1. Monitor Resource Utilization
2. Perform Operational Readiness Review
3. Employ Cost-Optimization Strategies
4. Identify Key Metrics for Service

3 Monitoring and Incident Management **15%**

1. Create and Maintain Metrics, Traces, and Alerts
2. Collect, Analyze, and Manage Logs on IBM Cloud
3. Manage Incidents
4. Perform Post Incident Review
5. Recognize and Differentiate Performance and Availability Metrics
6. Perform Statistical Analysis to Assess Trends and Create Actionable Outcomes

4 Security and Compliance **11%**

4 Security and Compliance 11%

1. Monitor Security Threats
2. Implement and Manage Security Policies
3. Implement Encryption Models
4. Manage Role-Based Access Control (RBAC) on IBM Cloud
5. Define the Shared Responsibility Model

5 Compute Infrastructure 10%

1. Troubleshoot VMs on IBM Cloud
2. Troubleshoot clusters on IBM Kubernetes Service (IKS)
3. Troubleshoot clusters on Red Hat OpenShift on IBM Cloud
4. Troubleshoot Serverless Services
5. Configure for High Availability and Scalability
6. Explain the impact of compute on service performance

6 Networking 8%

1. Troubleshoot external connections to IBM Cloud
2. Troubleshoot inter service connectivity on IBM Cloud
3. Explain the reliability ramifications of IBM Cloud Networking Features
4. Explain the impact of networking on service performance

7 Storage and Data Management 10%

1. Manage Storage and Data Attributes
2. Manage Data Replication and Retention
3. Explain the impact of storage on service performance

7 Storage and Data Management

10%

- 1. Manage Storage and Data Attributes
- 2. Manage Data Replication and Retention
- 3. Explain the impact of storage on service performance
- 4. Data Security and Compliance
- 5. Storage and Data Durability
- 6. Storage and Data Capacity Management

8 Reliability and Resiliency

11%

- 1. Design and Improve Reliability for the System/Service
- 2. Design for Failure and Recovering from Failure

9 Deployment Automation

11%

- 1. Design Non-Disruptive Deployment
- 2. Troubleshoot Provisioning of IBM Cloud Resources
- 3. Implement Infrastructure as Code
- 4. Explain the responsibilities of the SRE to the CI/CD Pipelines
- 5. Troubleshoot CI/CD Pipelines

Related Certification

IBM Certified Professional SRE - Cloud v2

IBM Cloud : Cloud Solutions
PartnerWorld Code: C0007801

Objectives

Exam Preparation

The sample test is designed to give the candidate an idea of the content and format of the questions that will be on the certification exam. Performance on the sample test is NOT an indicator of performance on the certification exam. This should not be considered an assessment tool.

PDF [Sample Test for Test C1000-119](#)

Use the study guide to help pass this exam. A study guide is an easy to follow document that will help you prepare for this exam. The guide is free and can be downloaded immediately.

PDF [Study Guide PDF here](#)

This exam has an Assessment Exam option: **A1000-119 Assessment: IBM Cloud Professional SRE v2**

Assessment exams are web-based exams that provides you, at a cheaper costs, the ability to check your skills before taking the certification exam.

This assessment exam is available in: English
Passing the exam **does not** award you a certification, and it is only used to help you assess if you are ready or not to take the certification exam.

You can register for it at [Pearson VUE](#) and it will provide you a score report, showing you how you did in each section.

Courses and publications are offered to help you prepare for the certification tests. The courses are recommended, but not required, before taking a certification test. When preparing for the certification test, keep in mind that real world experience is required to stand a reasonable chance of passing the certification test. Courseware does not replace the requirement for experience. Please note that course offerings are continuously being added and updated.

Learning Path

Related Certifications



IBM Certified Professional SRE - Cloud v2

[View certificate here](#)



Sample Exam



The Sample Exam contains a subset of questions similar to those found on the actual exam

[Open Sample Exam PDF](#)



Available Languages

English

Experiences of a newly certified IBM Cloud SRE

- How did you study for it?
- What are the types of questions?



Study Guide

Exam C1000-119: IBM Cloud Professional SRE (Study Guide)

Exam Objective Details

1. Applying Site Reliability Engineering Principles

1.1. Manage the trade-off between Change, Velocity, and Reliability of the Service

SUBTASKS

- 1.1.1. Identify the driving forces behind site reliability engineering including velocity, reliability, and availability
- 1.1.2. Quantify risks to the user experience
- 1.1.3. Define an Error Budget

1.2. Facilitate Blameless Postmortems

SUBTASKS

- 1.2.1. Identify challenges to blameless postmortem culture
- 1.2.2. Describe the problem management process
- 1.2.3. Identify the benefits of a war room to problem solving

1.3. Identify Root Causes and Contributing Factors and Apply Software Engineering Principles Toward Mitigation

SUBTASKS

Sample Exam



1. What describes the maximum amount of time a system can fail or underperform without contractual consequence for any given month?
 - A. Error Budget
 - B. SLI
 - C. SLO
 - D. KPI

2. Where should a team start when trying to reduce error prone manual steps arising from the technical debt?
 - A. Automation
 - B. Monthly Billing Report
 - C. Technical Design Documents
 - D. Error Catalog

Assessment Exam

IBM Professional Certification Program

Get Certified ▾

Take an Exam ▾

Information Center

Announcements

Use the study guide to help pass this exam. A study guide is an easy to follow document that will help you prepare for this exam. The guide is free and can be downloaded immediately.

PDF [Study Guide PDF here](#)

This exam has an Assessment Exam option: **A1000-119 Assessment: IBM Cloud Professional SRE v2**

Assessment exams are web-based exams that provides you, at a cheaper costs, the ability to check your skills before taking the certification exam.

This assessment exam is available in: English

Passing the exam **does not** award you a certification, and it is only used to help you assess if you are ready or not to take the certification exam.

You can register for it at [Pearson VUE](#) and it will provide you a score report, showing you how you did in each section.


Courses and publications are offered to help you prepare for the certification tests. The courses are recommended, but not required, before taking a certification test. When preparing for the certification test, keep in mind that real world experience is required to stand a reasonable chance of passing the certification test. Courseware does not replace the requirement for experience. Please note that course offerings are continuously being added and updated.

Learning Path

[IBM Cloud Professional Site Reliability Engineer v2](#)

This learning path provides approximately 20 to 30 hours of content, including practice exercises in a virtual lab environment.

Sample Exam



The Sample Exam contains a subset of questions similar to those found on the actual exam

[Open Sample Exam PDF](#) →

Available Languages

English

Help

Certification Questions

- Example 1

A service owner is stating that their service needs to have an SLO of 99.99%. Why might the SRE team suggest a lower more appropriate target?

- A. Meeting the 99.99% target is too hard to achieve
- B. Users can't tell the difference between very high levels of availability anyway
- C. The target is something that should be exceeded but not by too much to support the error budget
- D. This is a new service so the availability target shouldn't be that high

Certification Questions

- Example 1

A service owner is stating that their service needs to have an SLO of 99.99%. Why might the SRE team suggest a lower more appropriate target?

- A. Meeting the 99.99% target is too hard to achieve
- B. Users can't tell the difference between very high levels of availability anyway
- C. The target is something that should be exceeded but not by too much to support the error budget**
- D. This is a new service so the availability target shouldn't be that high

Certification Questions

- Example 2

What is a responsibility of the First Responder role in a Cloud Service Operation Management structure?

- A. Responsible for identifying the root cause of the incident
- B. Responsible for receiving incident information and collaborates with SMEs to restore services as fast as possible
- C. Responsible for overseeing the handling of a problem and to bring it to closure
- D. Responsible for executing runbooks and working with subject matter experts (SMEs) to restore the service

Certification Questions

- Example 2

What is a responsibility of the First Responder role in a Cloud Service Operation Management structure?

- A. Responsible for identifying the root cause of the incident
- B. Responsible for receiving incident information and collaborates with SMEs to restore services as fast as possible
- C. Responsible for overseeing the handling of a problem and to bring it to closure
- D. Responsible for executing runbooks and working with subject matter experts (SMEs) to restore the service**



Type: Certification

Level: Intermediate

Cost: Paid

IBM Certified Professional SRE - Cloud v2

Issued by [IBM Professional Certification](#)

An IBM Cloud Site Reliability Engineer (SRE) is a person who operates services that sustain service level objectives and engineers scalable, secure, and highly reliable and resilient services. They do this by infusing automation, DevOps principles, proactive maintenance, rigorous troubleshooting, and more for workloads on IBM Cloud.

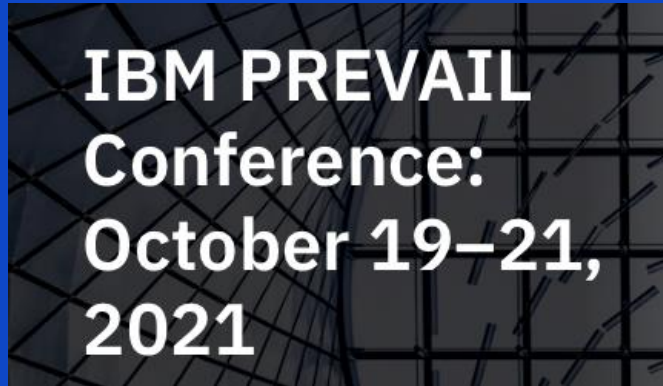
Skills

- Automation
- CI/CD
- Cloud
- Network Customization
- PWID-C0007801
- Red Hat OpenShift
- Security

Earning Criteria

- ✔ [Successful completion of IBM Certified Professional SRE - Cloud v2 exam](#)

Resources you can use



Event Devoted
for: IT
resilience,
performance,
security, quality
testing and SRE

<https://ibm.biz/BdfgnD>

- Join the Expert TV for the latest news and hot topics in cloud training:
 - <https://ibm.biz/ICCTonExpertTV>
- Join the discussion forum and connect with IBM Cloud Experts & Curriculum Managers:
 - <http://ibm.biz/cloudtrainingdiscussionforum>
- Look for new IBM Cloud role-based certifications on the ICCT web page:
 - www.ibm.com/training/cloud/jobroles

Q&A

