

6 Pillars of Enterprise Observability

AARON TOBIN

Product Manager, Cloud Pak for Multicloud Management &
IBM Observability with Instana

CHRIS FARRELL

Global Director of Content Strategy, Instana

May 25, 2021



What's new in *IBM Observability by Instana*

Version 1.0.197 – Released in April 2021:

- Expanded coverage of the **IBM Observability by Instana** observability platform and automated APM solution – designed specifically for the challenges of managing microservice and cloud native applications
 - This latest release delivers **enhancements and additional coverage** to **leverage your prior investments in IBM middleware** and more
 - **General Availability**
 - Watson AIOps – Alert Channel integration
 - Mainframe transactions integration with IBM Z APM Connect
 - **Technical Preview**
 - IBM DataPower
 - IBM App Connect Enterprise (ACE)
 - IBM Cloud Platform
 - Ingest IBM APM V8 generated metrics



Instana and Watson AIOps: Improve efficiency with automation

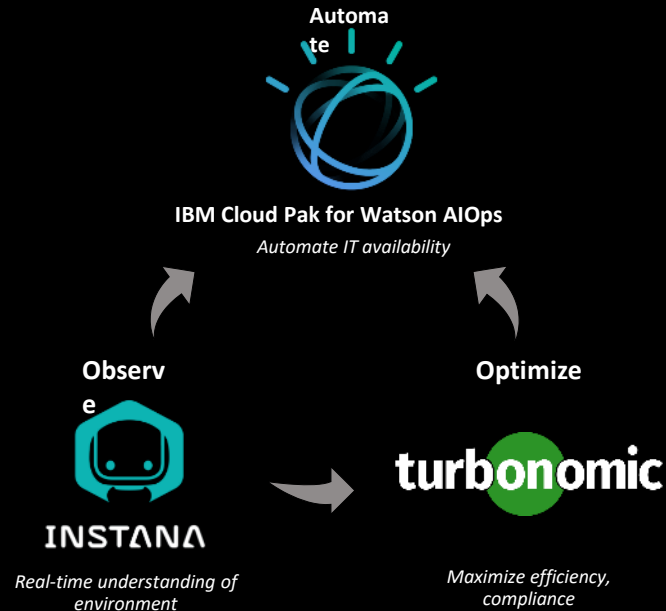


IBM Announces intent to acquire Turbonomic

Strengthening IBM's strategy as a hybrid cloud and AI company

Turbonomic helps businesses use AI to cut costs through optimizing the deployment of IT resources across development, test and production environments

Turbonomic complements IBM's recent acquisition of Instana and launch of IBM Cloud Pak for Watson AIOps to address AI-driven automation of IT; powered by Red Hat OpenShift to run anywhere





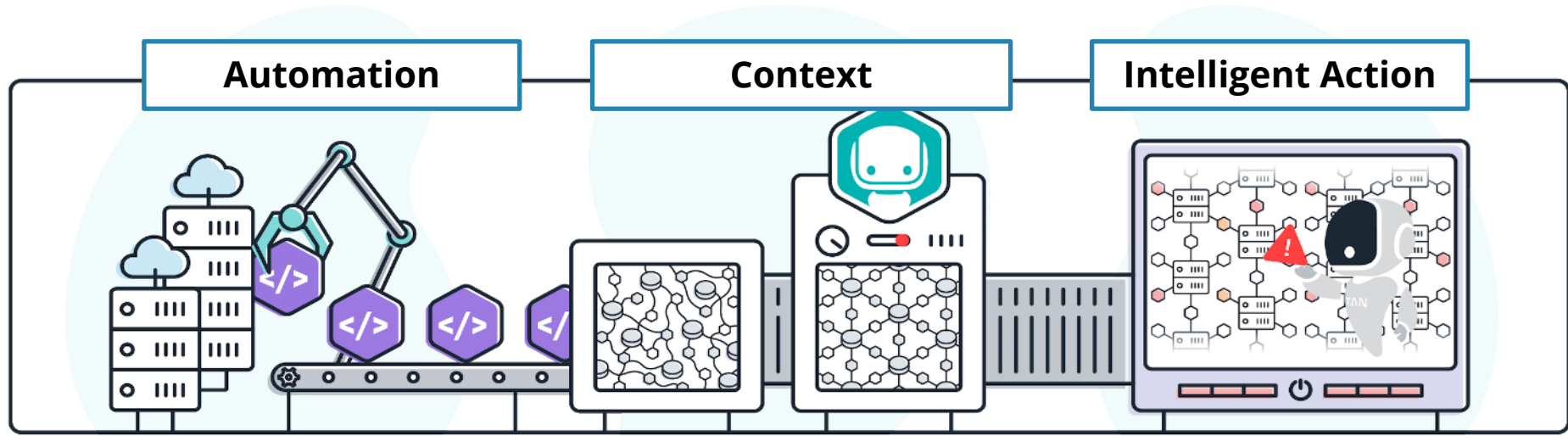
INSTANA

an IBM Company

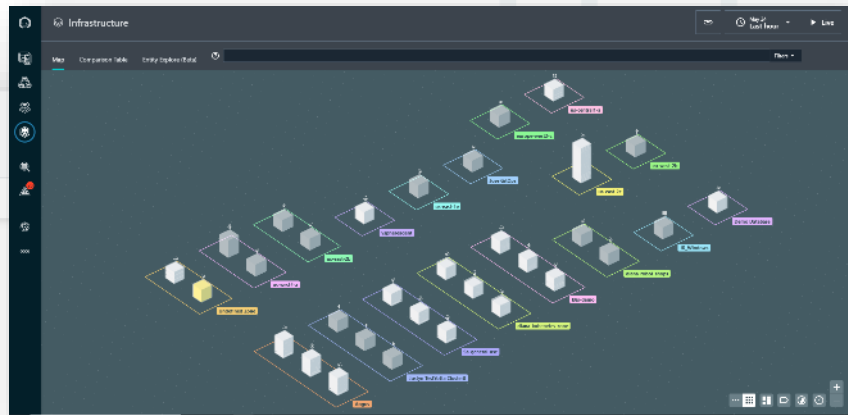
The Six Pillars of Enterprise Observability



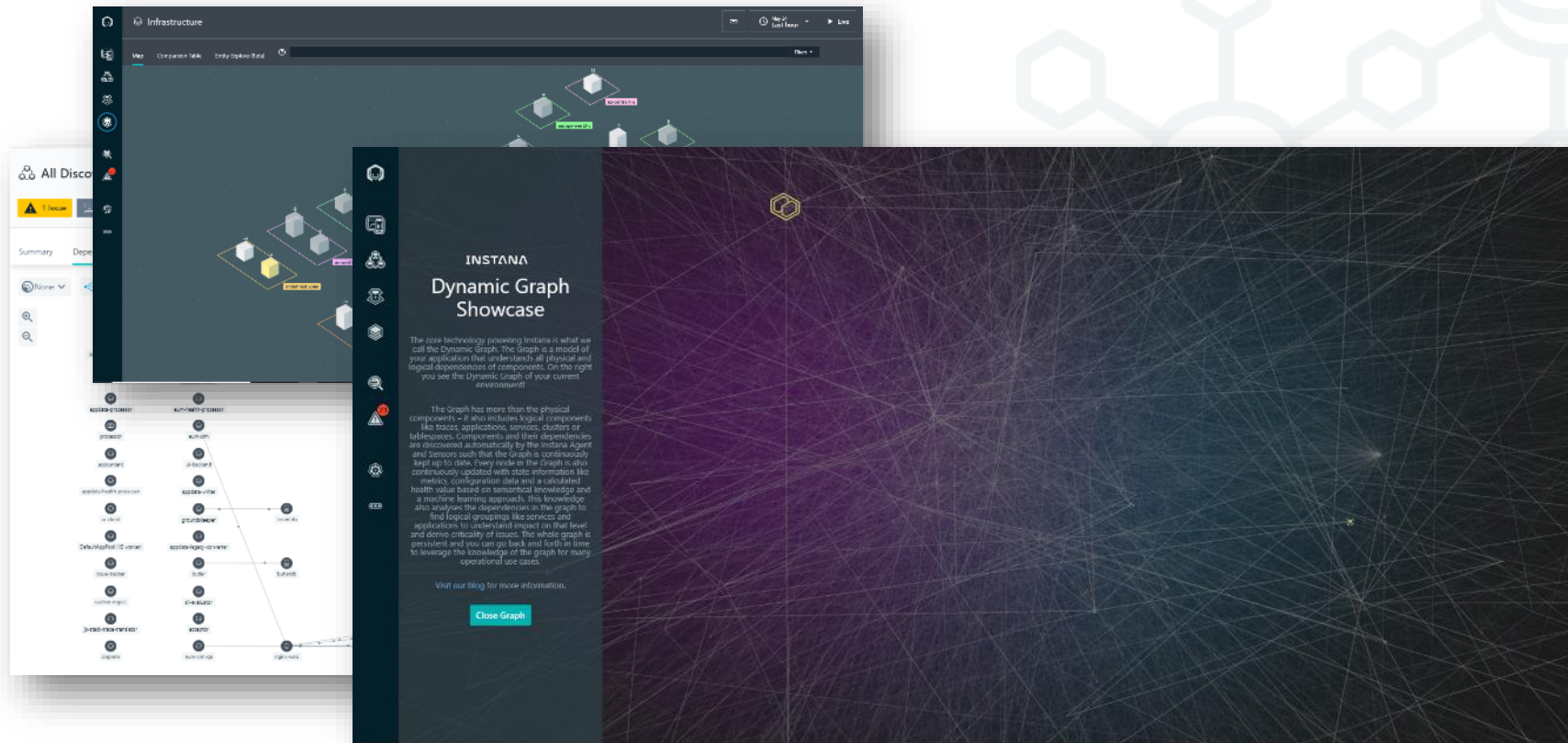
Enterprise Observability Drives Business Value



Risk Reduction ✓ Accelerated Innovation ✓ Efficiency Gain



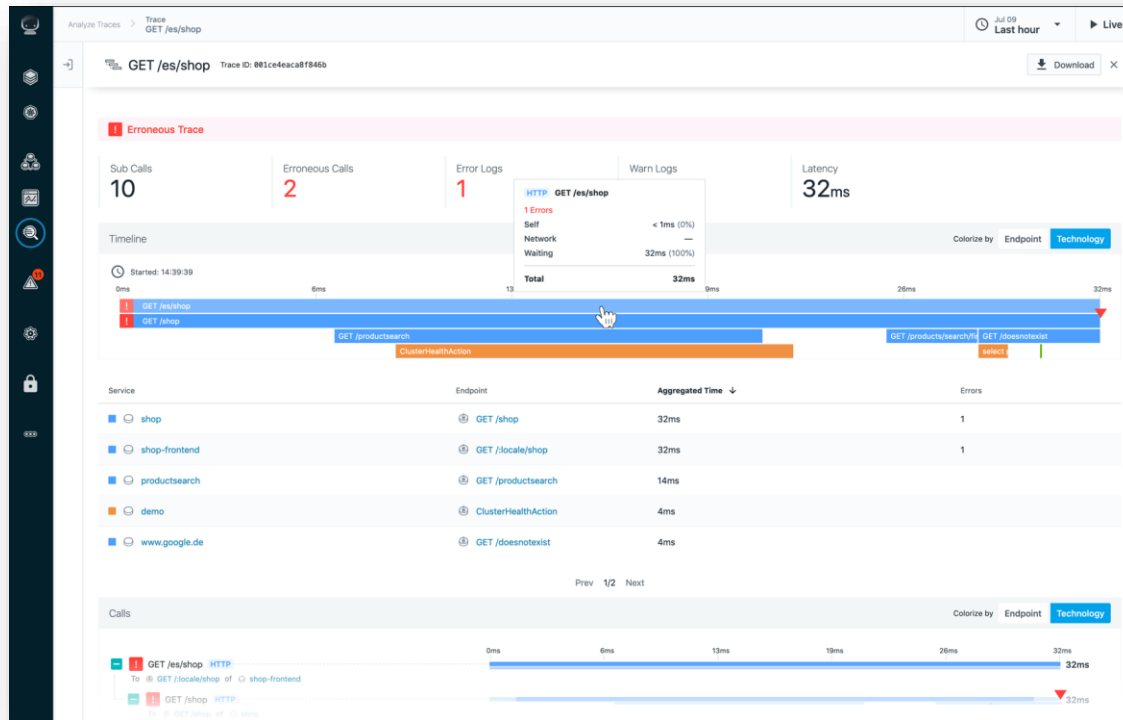
Pillar #2 – Real-Time Full Stack Application Data Model



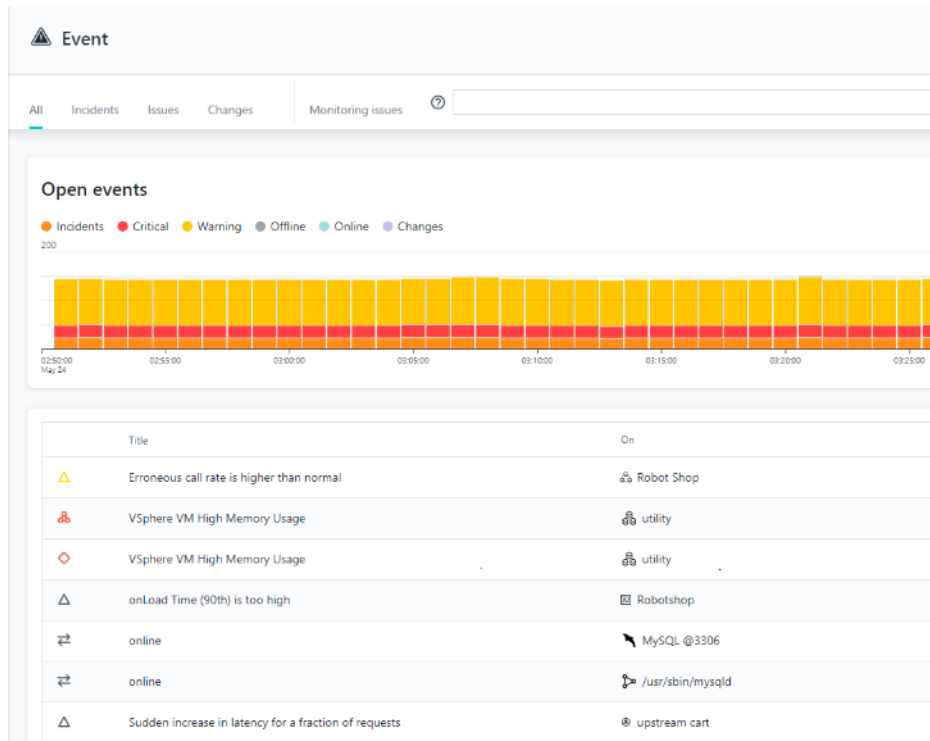
Pillar #3 – Always Accurate High Cardinality Data



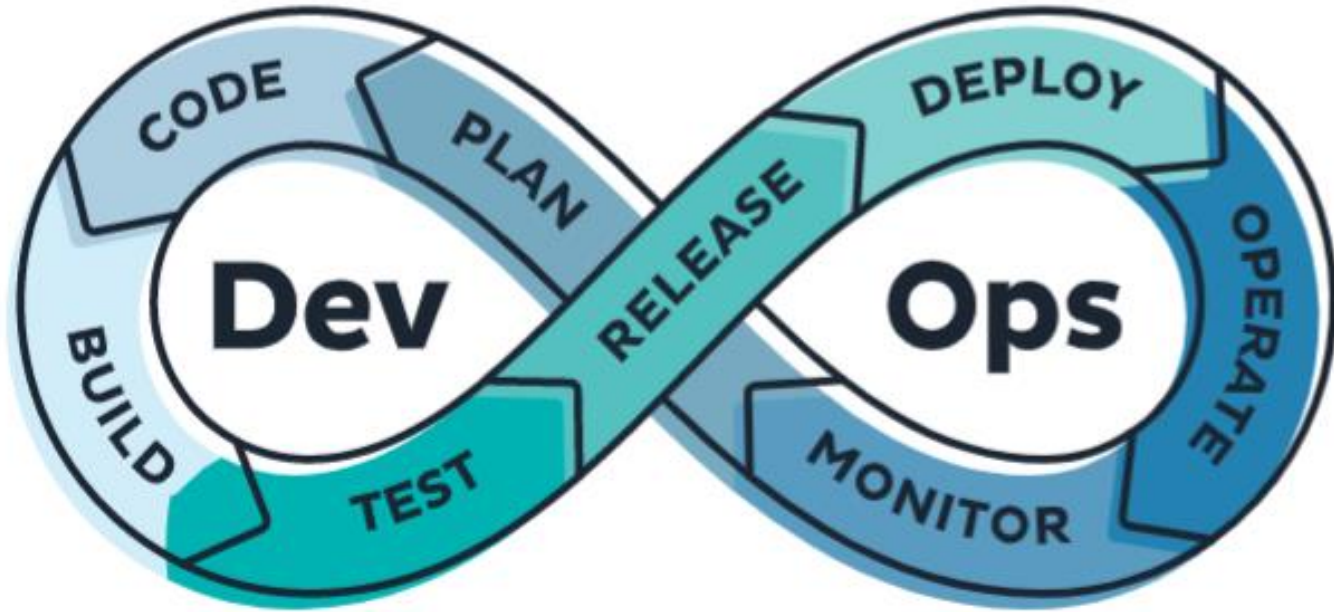
Pillar #4 – Automatically Trace Every Request



Pillar #5: AI-Driven Incident Prediction, Troubleshooting and Resolution



Pillar #6: Integrate with CI/CD Tooling





INSTANA
an IBM Company

Better, Stronger, Smarter Together: IBM + Instana



Preferred Observability feed for Watson AIOps

Contextualized data with metrics, traces, profiles, dependency mapping to drive automated remediation



Mainframe and Legacy Application and Infrastructure

Contribute mainframe and legacy infrastructure, applications, and middleware visibility



Enterprise-grade container platform

Builds on OpenShift's infrastructure management capabilities to provide deeper application visibility

IBM Automation / © 2021 IBM Corporation



Accurate real-time data

- 100% distributed tracing, 1 second metrics
- Immediate software deployment pipeline and CI/CD feedback



Continuous, real-time discovery of microservices and infrastructure

- Single agent architecture
- 250+ domain specific sensors



Powerful and easy to use data analytics

- Infinite flexibility to generate new insights from the entire repository of application request trace data



Dependency mapping of "applications"

- Automated dependency mapping across the entire stack
- Flexible Application Perspectives



Automated Root-cause analysis of Service Level violations

- Automatic event correlation including performance, errors, and changes